



SOSS UltraLatch

The SOSS UltraLatch is the latest addition to the SOSS door hardware line of products. Conceived, engineered and perfected in the U.S.A., UltraLatch's goal is to create the most comfortable and user-friendly door opening device in existence.

Nothing else exists like the UltraLatch. Its flowing lines and solid feel make it a pleasure to use... and a beautiful statement of style.

The elegant UltraLatch makes a bold statement in even the most sophisticated home or office. But it's built for everyday use, using the finest materials and workmanship.

So intuitive, a small child can use it without instruction. So convenient, you can open any door with your hands full.

**Intertek****CERTIFIED FIRE-RATING**

The SOSS UltraLatch provides confidence to match its convenience, certified for 20-minute fire-rated doors by Intertek's Warnock Hersey, the industry's most widely recognized certification mark.

ANSI GRADE 1

The SOSS UltraLatch has been independently-tested to meet or exceed ANSI Grade 1 specifications.

The Magic
of Touch



Specifications

The UltraLatch is:

STRONG... It is made of only top quality materials and constructed in the U.S.A. The base material for the SOSS UltraLatch is available in 316 stainless steel investment cast or zinc die cast.

COMFORTABLE... The UltraLatch is designed to conform to the shape of the hand and allows clearance for your knuckles.

CONVENIENT... Because of the UltraLatch's comfortable shape, opening doors is convenient for anyone. If you cannot grab the UltraLatch with your hand, this revolutionary door hardware works well with your hip or elbow.



FEATURES:

- UltraLatch is available for standard door thicknesses of 1 $\frac{3}{8}$ ", 1 $\frac{1}{4}$ " or 2" and metric door thicknesses of 32.5–37 mm, 42–47 mm, or 47–52 mm. Additionally, it is designed for a 2 $\frac{3}{8}$ " (60 mm) or 2 $\frac{3}{4}$ " (70mm) backset.
- You may purchase the Ultralatch with or without a privacy lock, or as a stationary handle, without the internal mechanism.
- Matching keyed deadbolts are also available for further security.
- Limited Lifetime Warranty: SOSS UltraLatch is warranted against defects in material or workmanship. Made in the U.S.A., patented in the United States and other countries.

BENEFITS:

- UltraLatch has been specifically designed to fit the 2 $\frac{1}{8}$ " (54 mm) diameter hole that is standard in most doors.
- The handles fit either right or left handed doors. All necessary hardware is packed with each UltraLatch.
- Easy Open: Ergonomic shape and location create the ideal function, eliminating the need to grip or rotate. Push/pull motion is easy for any size hand to operate.
- UltraLatch can be installed as a retrofit to existing doors as well as in new installations.

SPECIFICATIONS:

- ADA compliant
- Latch movement: 1 $\frac{1}{2}$ " max— push/pull
- Each handle to have independent spring mechanism designed to control latch.
- Function: Passage / Privacy as listed in hardware sets

APPLICATIONS: Healthcare, Patient Room Doors, Assisted Living Facilities, Disabled Housing, Educational Institutions, Home or Office

ANSI GRADE 1

The SOSS UltraLatch has been independently-tested to meet or exceed ANSI Grade 1 specifications.



FIRE-RATING

The SOSS UltraLatch has passed a Positive Pressure Fire Test and Hose Stream test for 20-minute fire-rated doors.



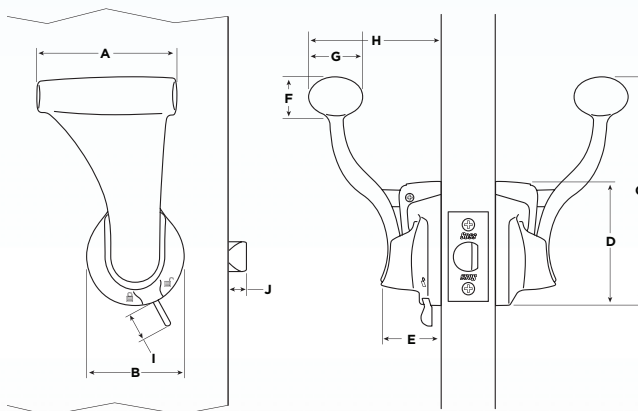


HANDLE SHOWN IN OIL RUBBED BRONZE

THE SOSS ULTRALATCH IS AVAILABLE
IN 10 DIFFERENT FINISHES:

 BHMA #704 Oil Rubbed Bronze US10B	 BHMA #677E Bright Brass, PVD US3
 BHMA #681E Bright Nickel, PVD US14	 BHMA #678E Satin Brass, PVD US4
 BHMA #682E Satin Nickel, PVD US15	 BHMA #629 Bright Stainless Steel US32
 BHMA #676 Textured Black US19	 BHMA #630 Satin Stainless Steel US32D
 BHMA #681 Bright Chrome US26	
 BHMA #682 Satin Chrome US26D	

ULTRALATCH DIMENSIONS



Dimension	Inches	MM
A	3 ⁹ / ₁₆ "	90.49 mm
B	4 ¹⁵ / ₃₂ "	47.62 mm
C	5 ²⁵ / ₃₂ "	127 mm
D	3 ¹ / ₈ "	76.20 mm
E	1 ¹ / ₂ "	38.10 mm
F	1 ¹ / ₁₆ "	26.99 mm
G	1 ³ / ₈ "	34.93 mm
H	3 ³ / ₈ "	85.73 mm
I	2 ³ / ₃₂ "	18.26 mm
J	2 ⁹ / ₆₄ "	11.51 mm

Standard Door Thickness: 1³/₈", 1³/₄" or 2"
Metric Door Thickness: 32.5–37 mm, 42–47 mm or 47–52 mm
Backset: 2³/₈" (60 mm) or 2³/₄" (70 mm)

MATCHING KEYED MEDECO DEADBOLT



AVAILABLE IN THE FOLLOWING FINISHES:

 Oil Rubbed Bronze US10B	 Bright Chrome US26
 Bright Nickel US14	 Satin Chrome US26D
 Satin Nickel US15	 Bright Brass US3
 Black US19	 Satin Brass US4

How to Order

The UltraLatch can be ordered through any SOSS dealer. Please use the Dealer Locator section of our website to find an authorized dealer.

www.soss.com/ultralatch

Your SOSS dealer will need the following information to order the correct setup for your UltraLatch:

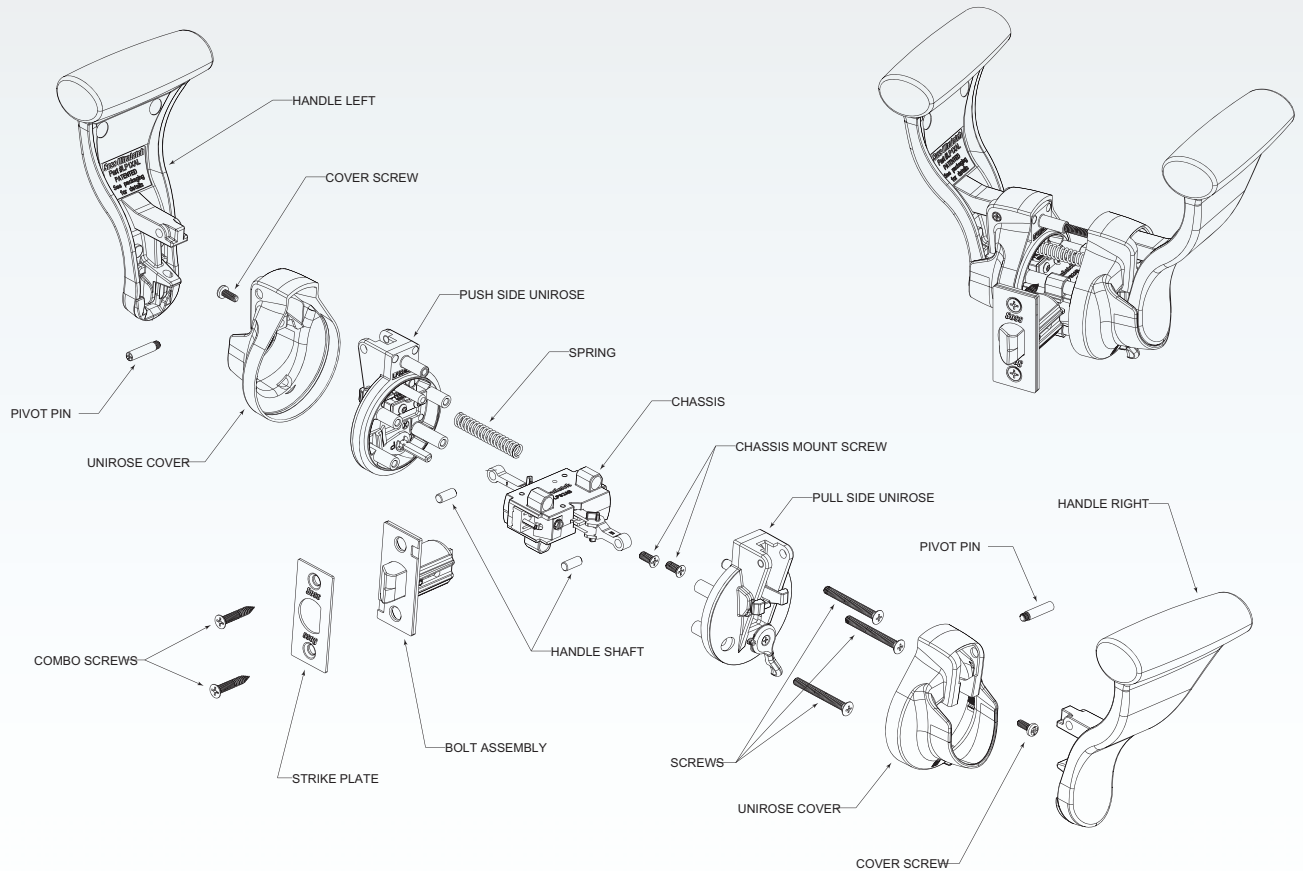
- 1 The total quantity of UltraLatches needed.
- 2 Number required with privacy lock.
- 3 Finish required — a list of finishes can be found on page 29.
- 4 The standard door thickness ($1\frac{3}{8}$ ", $1\frac{3}{4}$ " or 2") or the metric door thickness (32.5–37 mm, 42–47 mm or 47–52 mm).
- 5 The backset: $2\frac{3}{8}$ " (60 mm) or $2\frac{3}{4}$ " (70 mm).
- 6 Number of stationary (no internal mechanism) handles needed.
- 7 Number of deadbolt locks needed.
- 8 Backset finish required — a list of finishes can be found on page 29.
- 9 Backset for any deadbolts that are needed.
- 10 Type of key (keyed alike, keyed different or master key).

An UltraLatch order form is available on the SOSS Website for your convenience. You may also contact SOSS directly for assistance with ordering.

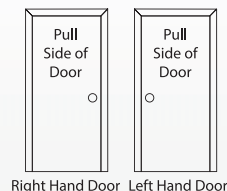


ULTRALATCH SHOWN IN BRIGHT BRASS

Installation



When you receive your UltraLatch from the factory, it will be ready for installation into a left hand door. Instructions are provided with the UltraLatch for changing the assembly to fit a right hand door.



To determine your door orientation, notice the bore hole location when facing the pull side of the door. If the bore hole is on the right, it's a right hand door and if on the left, it's a left hand door.

The following tools are required for installing the UltraLatch:

- Flat screwdriver
- Torpedo level
- Adjustable square
- 1" flat wood chisel
- Pencil
- #2 Phillips screwdriver
- Hammer
- Electric drill
- 1/8", 1/64" and 9/32" drill bits
- Small needle nose pliers
- Safety goggles or glasses
- UltraLatch drill guide (Recommended)



The UltraLatch requires a precisely located screw hole drilled perpendicular to the door face above the face hole. This is why we highly recommend the purchase of the optional UltraLatch drill guide to ensure the proper location of this hole.