

1233S PIVOT SET

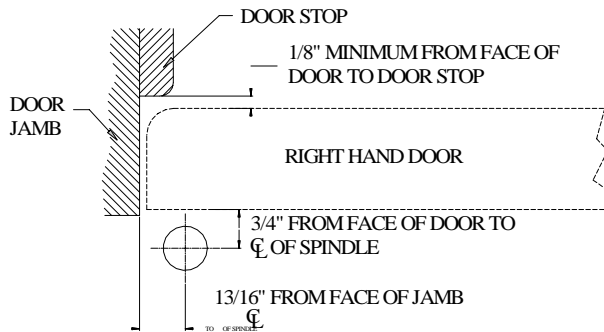
BROOKLINE MFG

CHICAGO, ILLINOIS

I-1233S 01/10/01

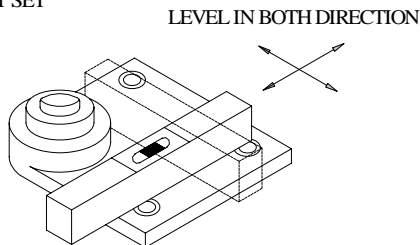
INSTALLATION INSTRUCTION

1. INSTALLATION ALIGNMENT



- MEASURE 13/16" OUT FROM DOOR JAMB.
- ALLOW 1/8" MINIMUM CLEARANCE FROM DOOR STOP TO DOOR FACE.
- MEASURE DOOR THICKNESS. ADD 3/4". WHERE LINES MEET DETERMINES CENTER LINE OF PIVOT SET.

2. SET PIVOT SET

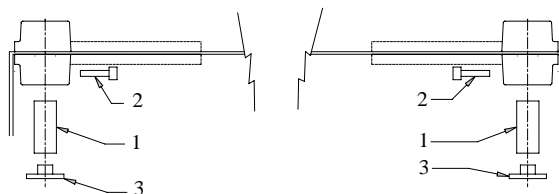


- PREPARE FLOOR TO RECEIVE FLOOR PIECE AS SHOWN ON REVERSE SIDE.
- CARE MUST BE EXERCISE TO SEE THAT FLOOR PIECE IS LEVEL. PLACE LEVELS PER ILLUSTRATION.
- FLOOR PIECE SHOULD BE PARALLEL WITH CENTER LINE OF DOOR.

3. INSTALL TOP PIVOT AND PIVOT ARM

- INSTALL TOP PIVOT IN DOOR PER TEMPLATE.
- INSTALL TOP PIVOT IN FRAME PER TEMPLATE.
- INSTALL ARM IN DOOR PER TEMPLATE.
- CENTER LINE OF PIVOT SHOULD LINE UP WITH CENTER LINE OF SPINDLE. USE PLUMB LINE AS ILLUSTRATED.
- IF SIDE JAMB PIVOT IS USED, SEE REQUIRED TEMPLATE.

4. HANG DOOR

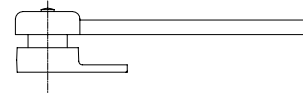


- SET DOOR ON PIVOT SET SPINDLE.
- PUSH ITEM 1 "TOP PIVOT PIN" IN PLACE AND TIGHTEN ITEM 2 "SCREW", ATTACH ITEM 3 "CAP".



IMPORTANT

USE PLUMB LINE TO MAKE SURE THAT CENTER LINE OF TOP PIVOT PIN LINES UP WITH CENTER LINE OF CLOSER SPINDLE.



RIGHT HAND INSTALLATION