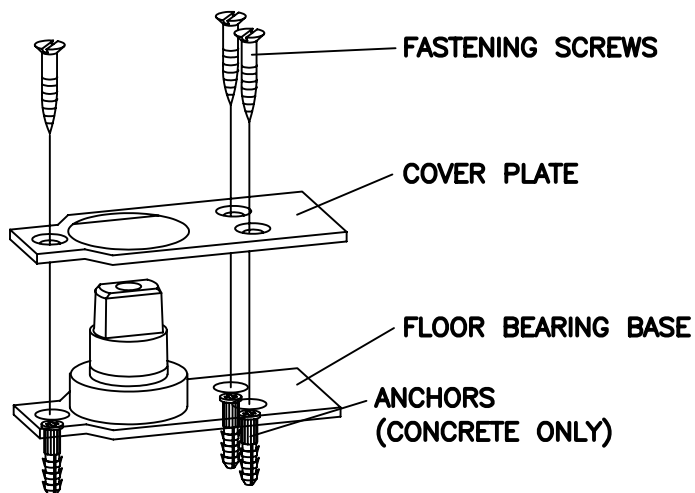


CENTER HUNG FLOOR BEARING



MODEL No.

7471K



FINISH

1) Prepare floor according to template.

For concrete floors use anchors and screws provided.

For wood floors, attach pivot directly with screws provided.

For threshold applications, drill a 1-9/16" diameter clearance hole in the threshold coinciding with the spindle location. Anchor floor bearing first, then the threshold in a usual fashion.

The floor bearing spindle must be in alignment with the top pivot.

The floor bearing base must be level in all directions.

Note:

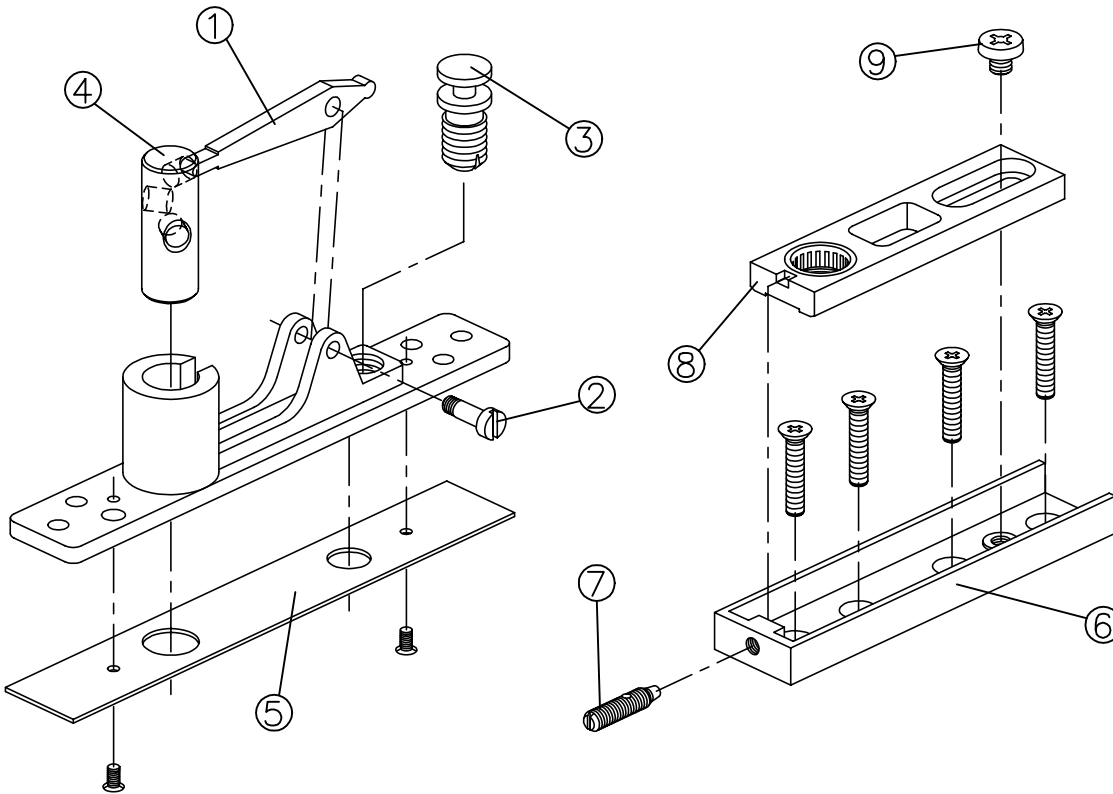
Place cover plate over floor bearing base prior to anchoring.

CENTER HUNG TOP PIVOT



MODEL No.

- 8062
- 8062 EXT PIN



FINISH

1. Determine the clearance between the door and header and adjust the projection of the pivot pin, if required. The pivot pin projection allows 1/8" clearance as shipped from the factory.
2. To change the projection of pivot pin or to install the (8062 EXT PIN) extended pivot pin, the following procedure is recommended:
 Remove the walking beam pivot screw (2) and push the pivot pin (4) out until the walking beam (1) is disengaged. Install extended pivot pin and engage walking beam into appropriate hole in pivot pin to obtain required projection. Be sure opposite end of walking beam is engaged in adjustment screw. (3) Reinstall walking beam pivot screw (2).
3. Retract pivot pin and install pivot into header. Install cover plate (5).
4. Fasten pivot channel (6) in top of door. Turn adjustment screw (7) approximately halfway into pivot channel. Place bearing insert (8) into pivot channel. Adjust pivot point accordingly. Lock bearing insert in place with set screw (9).
5. Install door and engage pivot pin by turning adjustment screw (3) clockwise.

CENTER HUNG BOTTOM ARM (ALUMINUM)

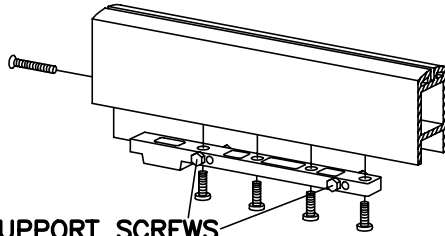
MODEL No.

- 1) Prepare door according to template.
- 2) Fasten arm to door.

Install bottom arm #7422.

7422

Install four lateral support screws in arm. Turn in screws completely. Fasten arm to door with four pan head machine screws. Secure end of arm with flat head machine screw. Turn the four lateral support screws counterclockwise until head of screws firmly contact door.



LATERAL SUPPORT SCREWS

- 3) Install door.

With door parallel to frame, place bottom arm onto spindle. Rotate door approximately 90°. Align bearing with pivot pin. Engage pivot pin by turning adjustment screw clockwise. Check to make sure pivot pin is fully engaged in door portion of pivot.

FINISH

