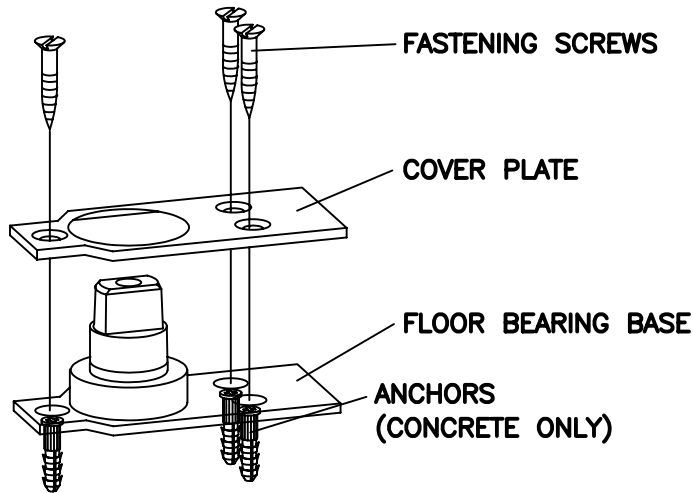


7471K



See Template for Location

FINISH

1) Prepare floor according to template.

For concrete floors use anchors and screws provided.

For wood floors, attach pivot directly with screws provided.

For threshold applications, drill a 1-9/16" diameter clearance hole in the threshold coinciding with the spindle location. Anchor floor bearing first, then the threshold in a usual fashion.

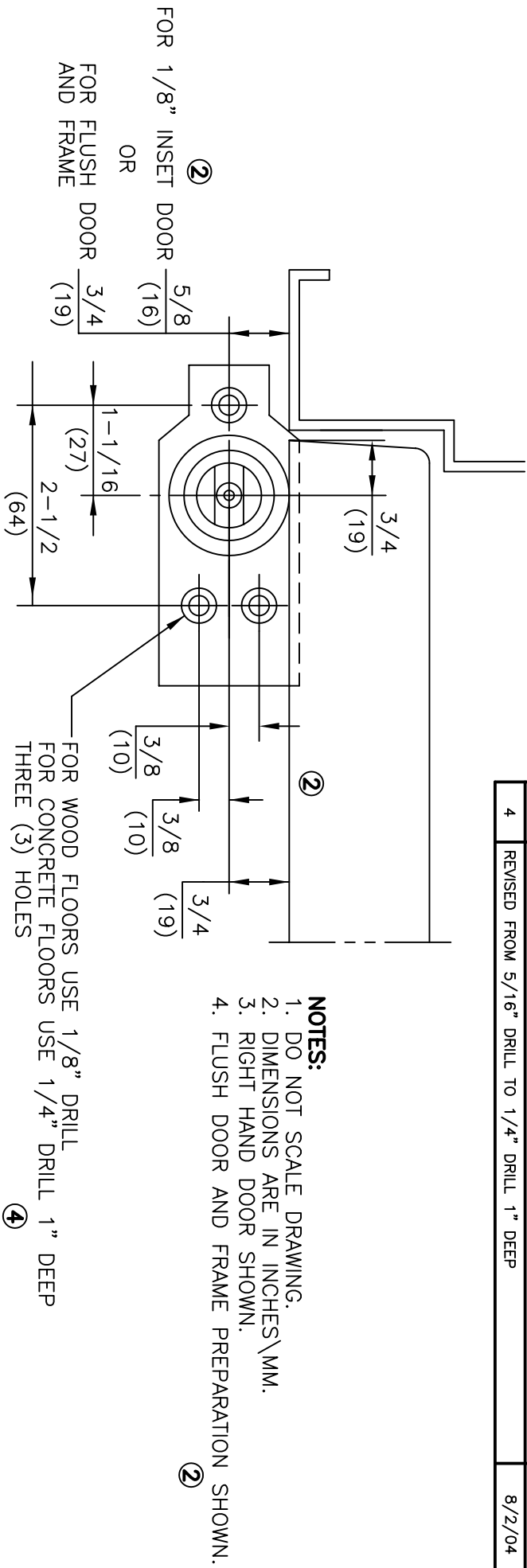
The floor bearing spindle must be in alignment with the top pivot.

The floor bearing base must be level in all directions.

Note:

Place cover plate over floor bearing base prior to anchoring.

No.	REVISIONS	DATE
2	DELETED NOTE 1 AND REVISED NOTE 6. DOOR SHOWN FLUSH, ADDED FLUSH AND 1/8" INSET DIMENSIONS.	3/6/92
3	DELETED CHART AND NOTE 4	3/19/92
4	REVISED FROM 5/16" DRILL TO 1/4" DRILL 1" DEEP	8/2/04



- NOTES:**
1. DO NOT SCALE DRAWING.
 2. DIMENSIONS ARE IN INCHES\MM.
 3. RIGHT HAND DOOR SHOWN.
 4. FLUSH DOOR AND FRAME PREPARATION SHOWN. ②

ITEM No. 7471K
3/4" OFFSET FLOOR BEARING INSTALLATION
FOR USE WITH 75323 AND 75343 BOTTOM ARM ①



DORMA Architectural Hardware
REAMSTOWN, PENNSYLVANIA 17567
TEMPLATE No. LM-30 ④

3/4" OFFSET BOTTOM ARM

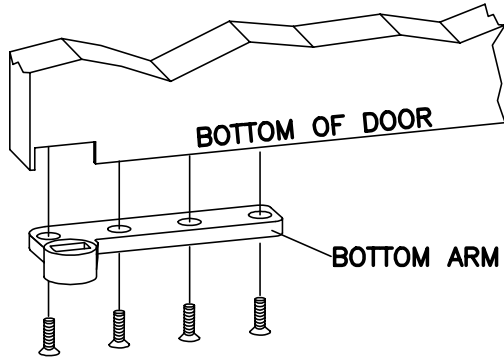


MODEL No.

1) Prepare door according to template.

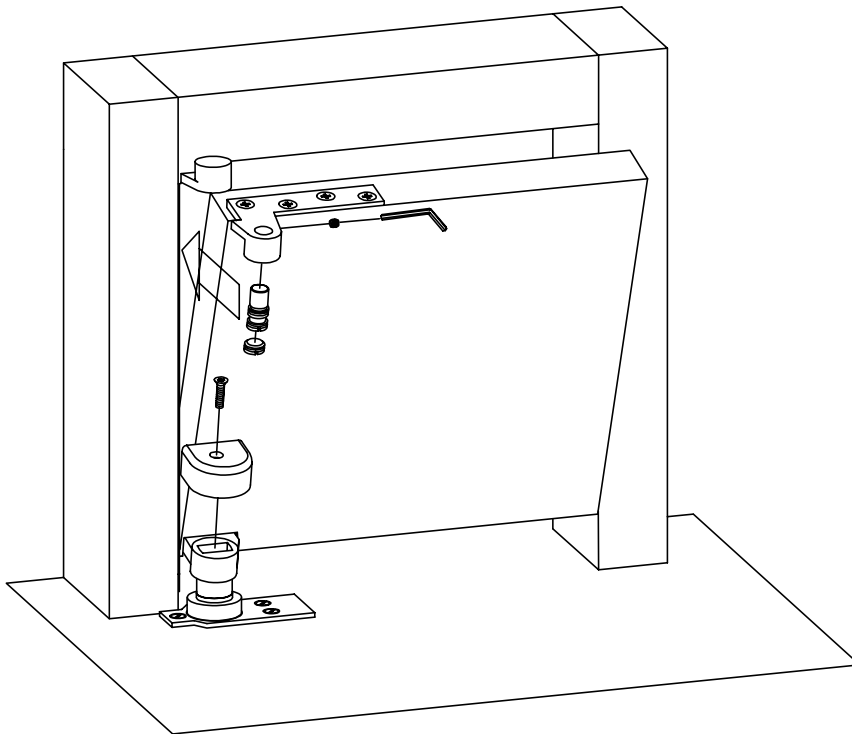
75323

LH RH



2) Fasten arm to door.

FINISH



3) Install door.

4) Attach cover cap with screw provided.

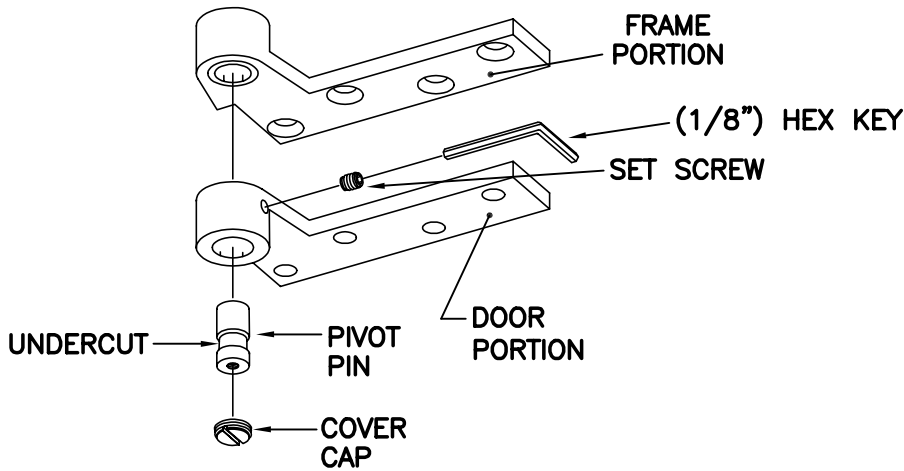
3/4" OFFSET TOP PIVOT



MODEL No.

- 1) Prepare door and frame according to template.
- 2) Remove door portion cover cap, set screw and pivot pin.

<input type="checkbox"/> 75120 5/8	<input type="checkbox"/> 75120
<input type="checkbox"/> 75122 5/8	<input type="checkbox"/> 75122
<input type="checkbox"/> 75133 5/8	<input type="checkbox"/> 75133
(1/8" INSET) DOOR	(FLUSH) DOOR
<input type="checkbox"/> LH	<input type="checkbox"/> RH
<input type="checkbox"/> NH	



FINISH

- 3) Fasten pivot to door and frame.
- 4) Install door. Align door and frame portions of top pivot. Install pivot pin making sure undercut area of pin aligns with set screw. Tighten set screw securely. Install door portion cover cap.

NOTE:

Depending on type of pivot and hand of door, set screw may be in door portion or frame portion of pivot. However, pivot will always be removeable through door portion.