

# 7471HD HEAVY DUTY FLOOR BEARING

## 3/4" OFFSET, 1-1/2" OFFSET, CENTER HUNG

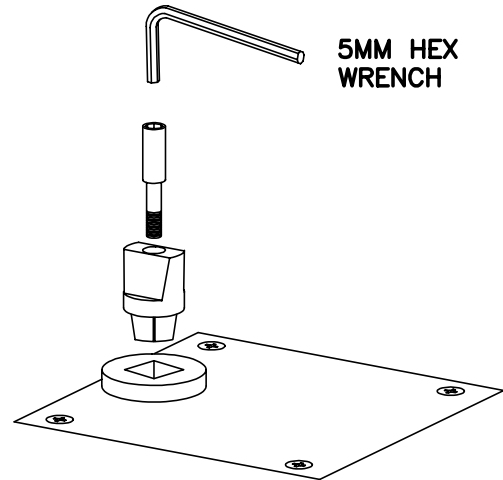


Prepare floor according to template.  
 Grout in floor bearing with anchors and attach cover plate.  
 Make sure spindle center line is in proper alignment with top pivot.  
 Bearing should be grouted in place so that it is square with frame, level in all directions and top of cover plate will be flush with finished floor. For threshold applications, drill a 1-1/4" diameter clearance hole in the threshold coinciding with the spindle location. Top of floor bearing cement case is flush with finished floor line for threshold applications. Anchor floor bearing first, then the threshold in a usual fashion. Attach spindle with spindle screw using 5mm hex wrench.

MODEL No.

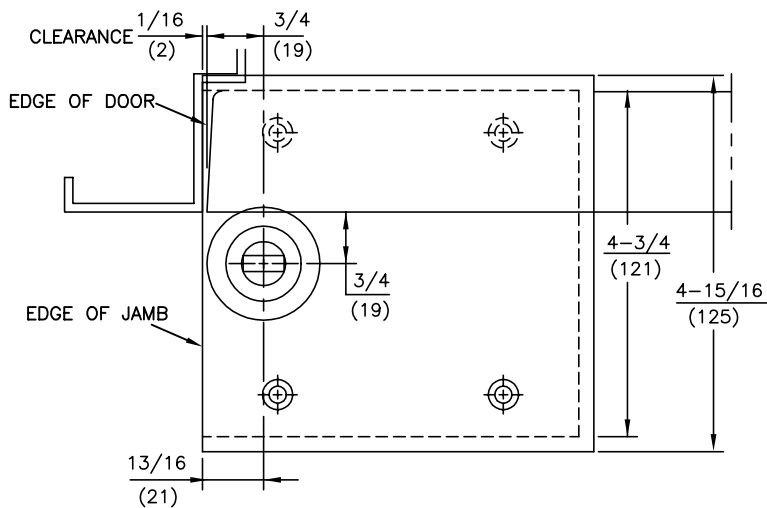
7471HD

FINISH



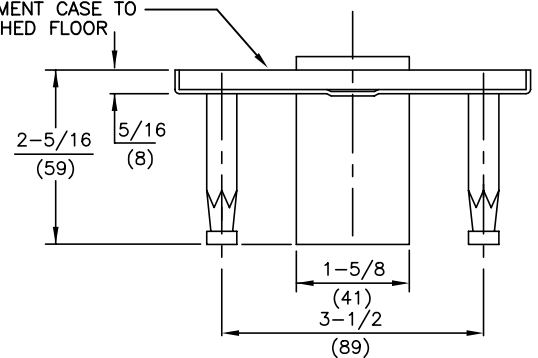
**NOTES:**

1. DO NOT SCALE DRAWING.
2. DIMENSIONS ARE IN INCHES\MM.
3. RIGHT HAND DOOR SHOWN.



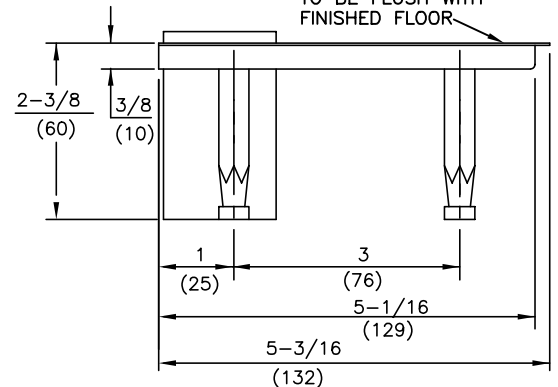
**3/4" OFFSET  
 STD. OR LEAD LINED**

TOP SURFACE OF CEMENT CASE TO BE FLUSH WITH FINISHED FLOOR



WITH THRESHOLD

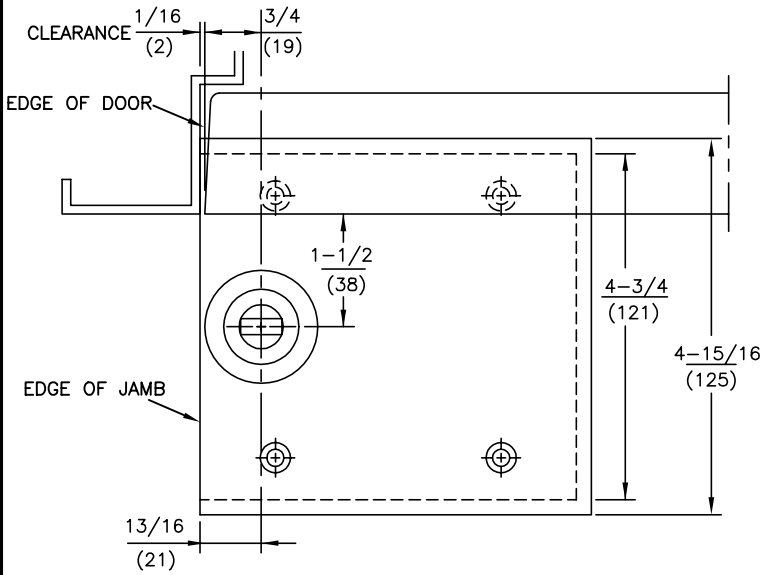
BASE COVER PLATE TO BE FLUSH WITH FINISHED FLOOR



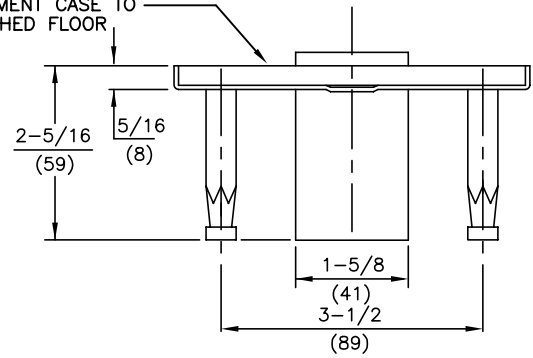
WITHOUT THRESHOLD

**NOTES:**

1. DO NOT SCALE DRAWING.
2. DIMENSIONS ARE IN INCHES\MM.
3. RIGHT HAND DOOR SHOWN.

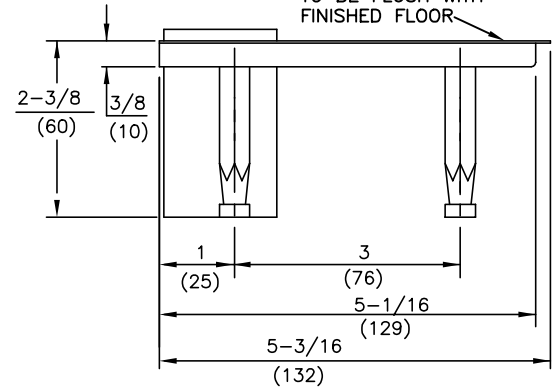


TOP SURFACE OF CEMENT CASE TO BE FLUSH WITH FINISHED FLOOR



WITH THRESHOLD

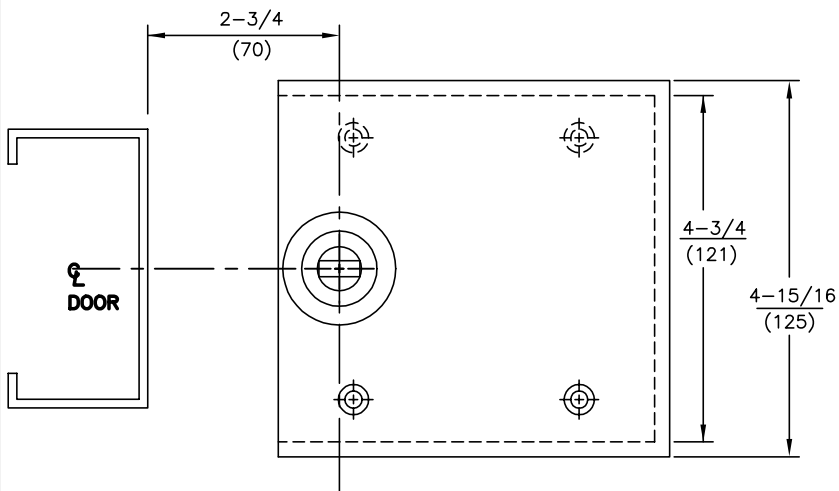
BASE COVER PLATE TO BE FLUSH WITH FINISHED FLOOR



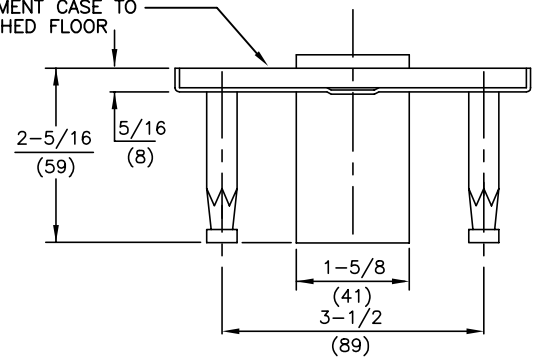
WITHOUT THRESHOLD

**NOTES:**

1. DO NOT SCALE DRAWING.
2. DIMENSIONS ARE IN INCHES\MM.
3. RIGHT HAND DOOR SHOWN.

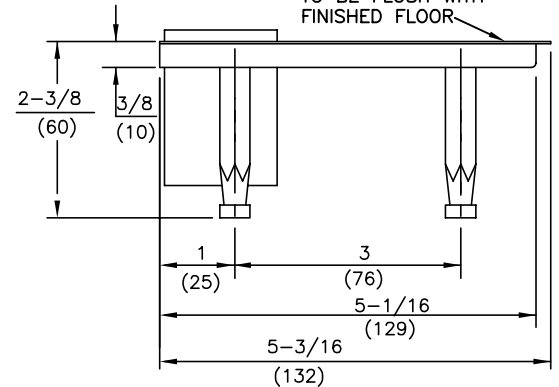


TOP SURFACE OF CEMENT CASE TO BE FLUSH WITH FINISHED FLOOR



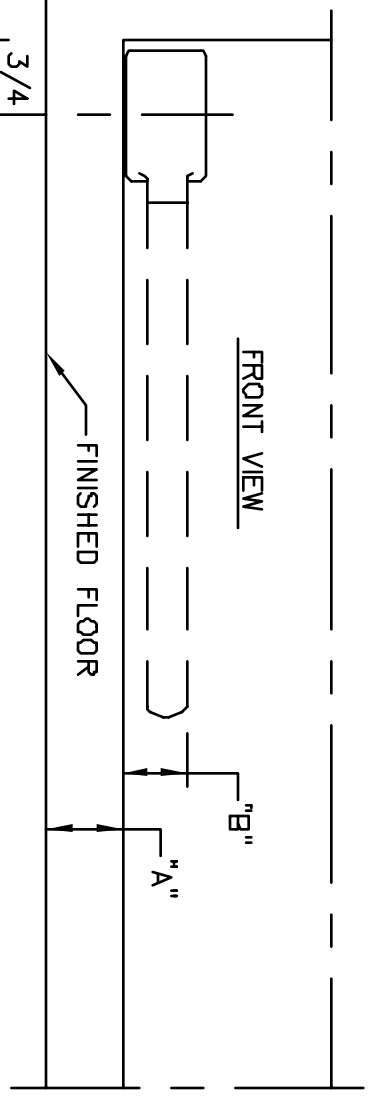
WITH THRESHOLD

BASE COVER PLATE TO BE FLUSH WITH FINISHED FLOOR

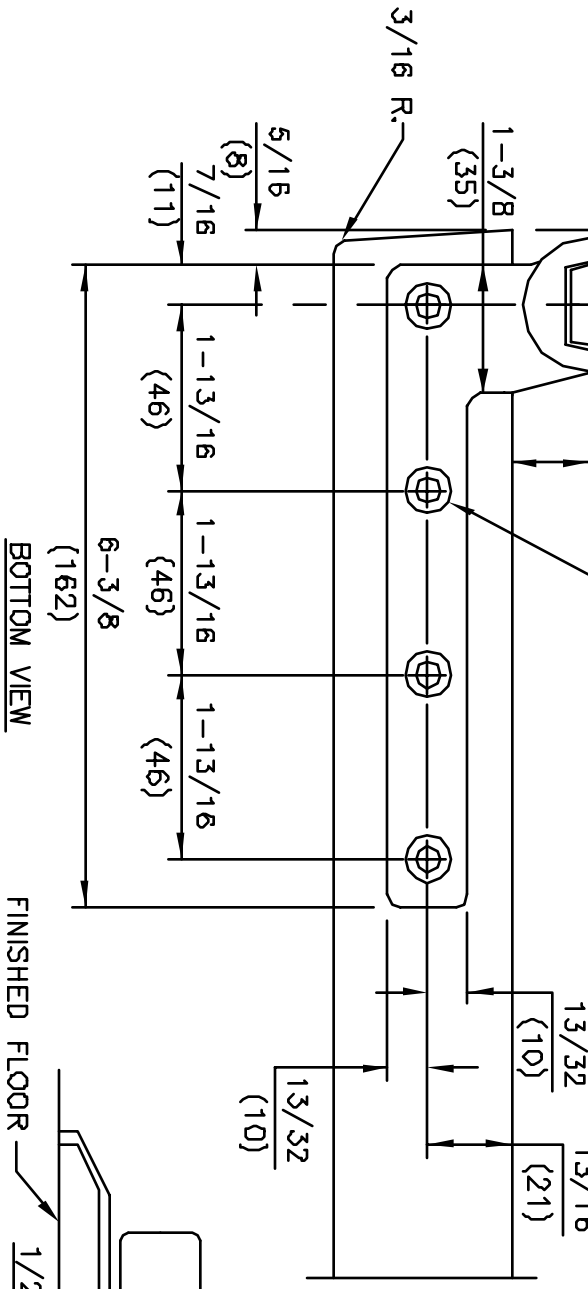


WITHOUT THRESHOLD

No.	REVISIONS	DATE
-----	-----------	------



FOR 1/4-20 MACHINE SCREWS USE No.7 DRILL  
 FOR No.14 WOOD SCREWS USE 5/32" DRILL  
 FOUR (4) HOLES IN DOOR



- NOTES
1. DO NOT SCALE DRAWING.
  2. DIMENSIONS ARE IN INCHES/(MM).
  3. RIGHT HAND DOOR SHOWN.
  4. BEVEL HEEL EDGE OF DOOR 1/8" IN 2".
  5. ALL NECESSARY REINFORCEMENT FOR ARM BY OTHERS.

SPINDLE EXT.	"A"	"B"
74003	3/8"	3/4"
74003	9/16"	9/16"
STD.74005	3/4"	9/16"
74007	7/8"	9/16"
74010	1"	9/16"
74012	1-1/16"	9/16"
74015	1-1/8"	9/16"
74020	1-3/8"	9/16"
74025	1-9/16"	9/16"
74030	1-3/4"	9/16"

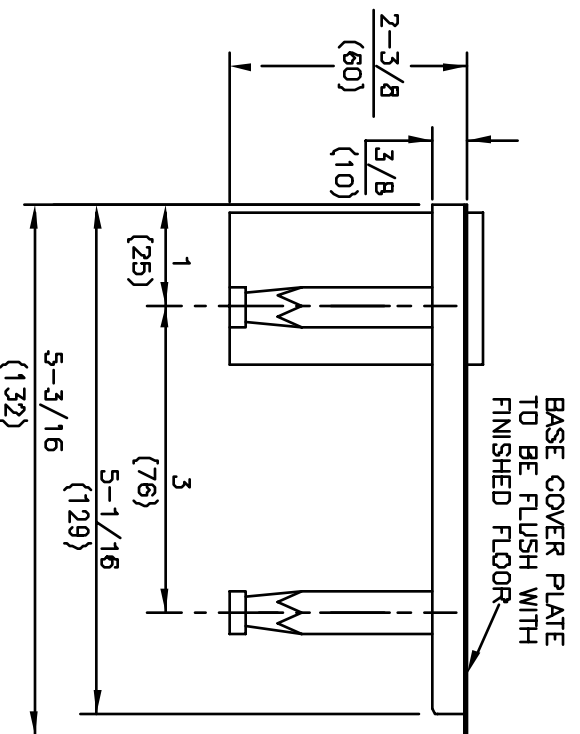
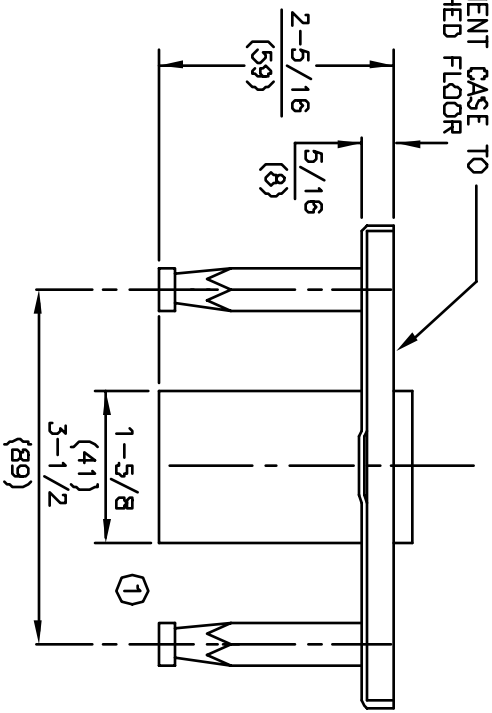
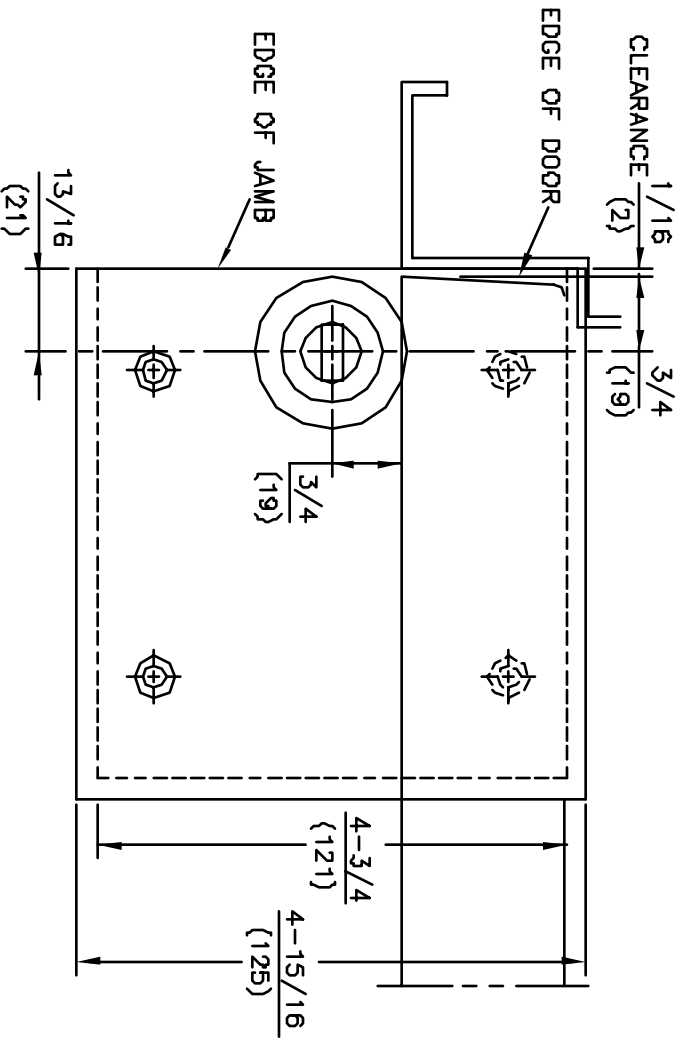
ITEM No. 75323  
 3/4" OFFSET BOTTOM ARM  
 FOR NON-FIRE OR 3 HR. RATED DOORS  
 FOR USE WITH 7471HD FLOOR BEARING



DORMA Architectural Hardware  
 REAWSTOWN, PENNEY VANIA 7537  
 TEMPLATE No. LM-63

- NOTES:
1. DO NOT SCALE DRAWING.
  2. DIMENSIONS ARE IN INCHES \ MM.
  3. RIGHT HAND DOOR SHOWN.

TOP SURFACE OF CEMENT CASE TO BE FLUSH WITH FINISHED FLOOR



No.	REVISIONS	DATE
1	REVISED DIMENSION	4/24/00

ITEM No. 7471HD FLOOR BEARING  
 3/4" OFFSET HEAVY DUTY FLOOR BEARING INSTALLATION  
 FOR USE WITH 75323 & 75343, 75343-2,  
 75343-2-1/4, 75343-2-1/2, 75343-3 LEAD LINED BOTTOM ARMS  
 ALWAYS CONSULT DORMA'S WEB SITE FOR LATEST TEMPLATE AT WWW.DORMA-USA.COM OR CALL 1 800 523 8483



DORMA Architectural Hardware  
 REAWSTOWN, PENNEY VANIA 7537  
 TEMPLATE No. LM-60

# 3/4" OFFSET BOTTOM ARM

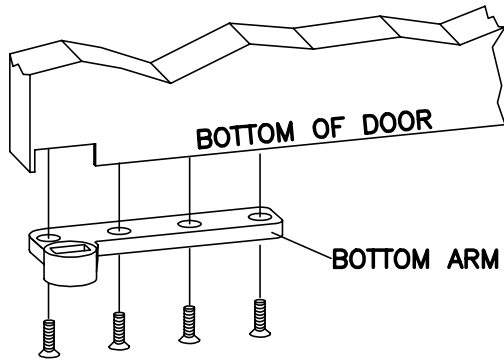


MODEL No.

1) Prepare door according to template.

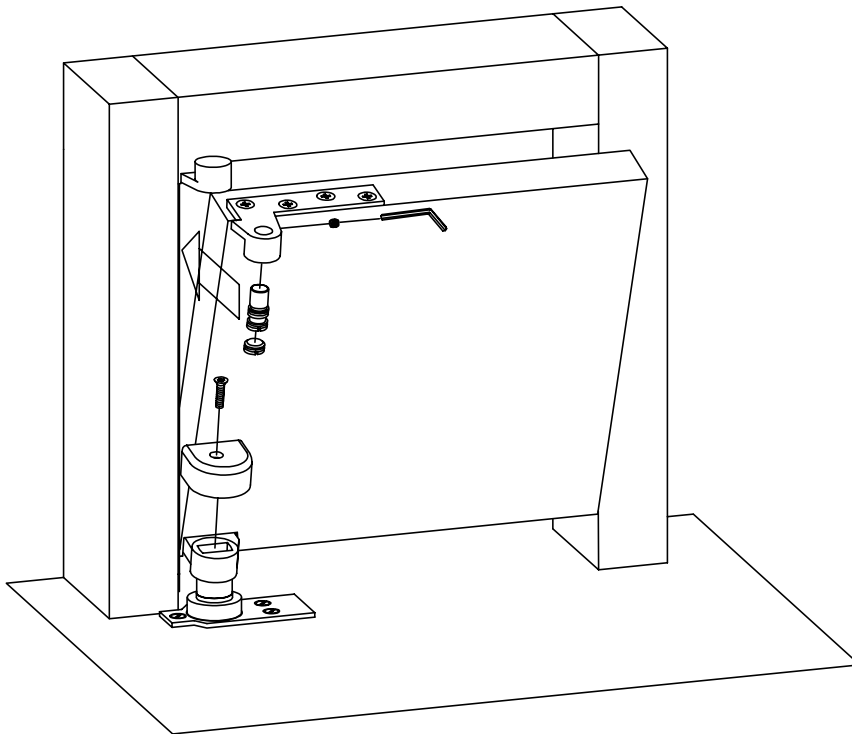
75323

LH  RH



2) Fasten arm to door.

FINISH



3) Install door.

4) Attach cover cap with screw provided.

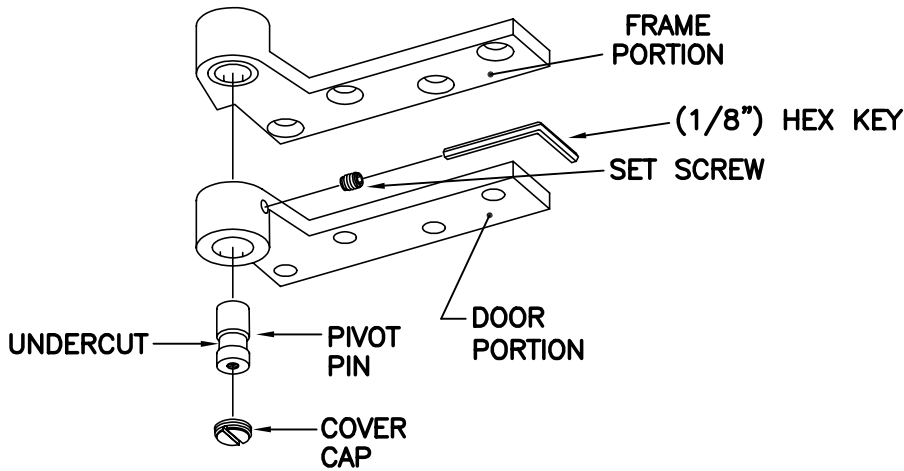
# 3/4" OFFSET TOP PIVOT



MODEL No.

- 1) Prepare door and frame according to template.
- 2) Remove door portion cover cap, set screw and pivot pin.

<input type="checkbox"/> 75120 5/8	<input type="checkbox"/> 75120
<input type="checkbox"/> 75122 5/8	<input type="checkbox"/> 75122
<input type="checkbox"/> 75133 5/8	<input type="checkbox"/> 75133
(1/8" INSET) DOOR	(FLUSH) DOOR
<input type="checkbox"/> LH	<input type="checkbox"/> RH
<input type="checkbox"/> NH	



FINISH

- 3) Fasten pivot to door and frame.
- 4) Install door. Align door and frame portions of top pivot. Install pivot pin making sure undercut area of pin aligns with set screw. Tighten set screw securely. Install door portion cover cap.

**NOTE:**

Depending on type of pivot and hand of door, set screw may be in door portion or frame portion of pivot. However, pivot will always be removeable through door portion.