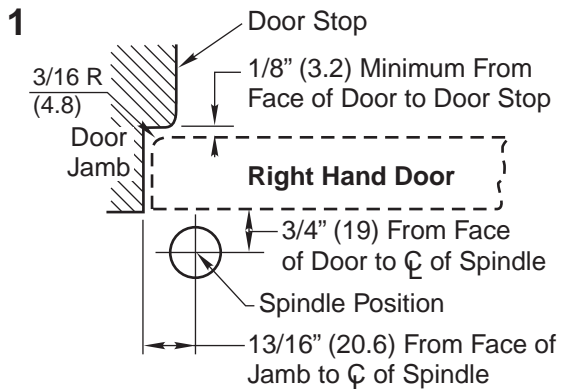
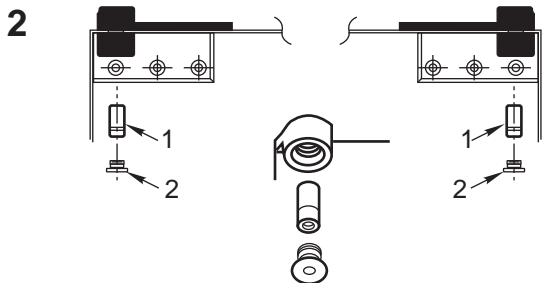
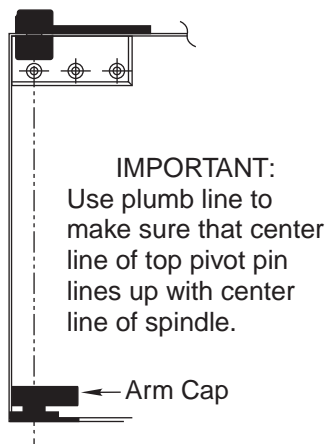


280 Top Pivot



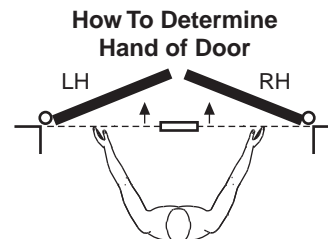
1. Install Pivot

- Measure 13/16" (20.6) out from door jamb.
- Allow 1/8" (3.2) min. clearance from door stop to door face. Measure door thickness. Add 3/4" (19).
- Where lines meet determines center line of closer/bottom pivot.
- Install top pivot in door per template.
- Install top pivot in frame per template.



2. Hang Door

- Set door on bottom pivot/closer spindle.
- Push Item 1 "top pivot pin" into place. Attach "cap" Item 2. **CAP MUST BE TIGHTENED SECURELY**



Face a door swinging open away from you. If it opens to the right, it is right hand. If it opens to the left, it is left hand.

**280 Top Pivot
 3/4" Offset
 Half Surface**

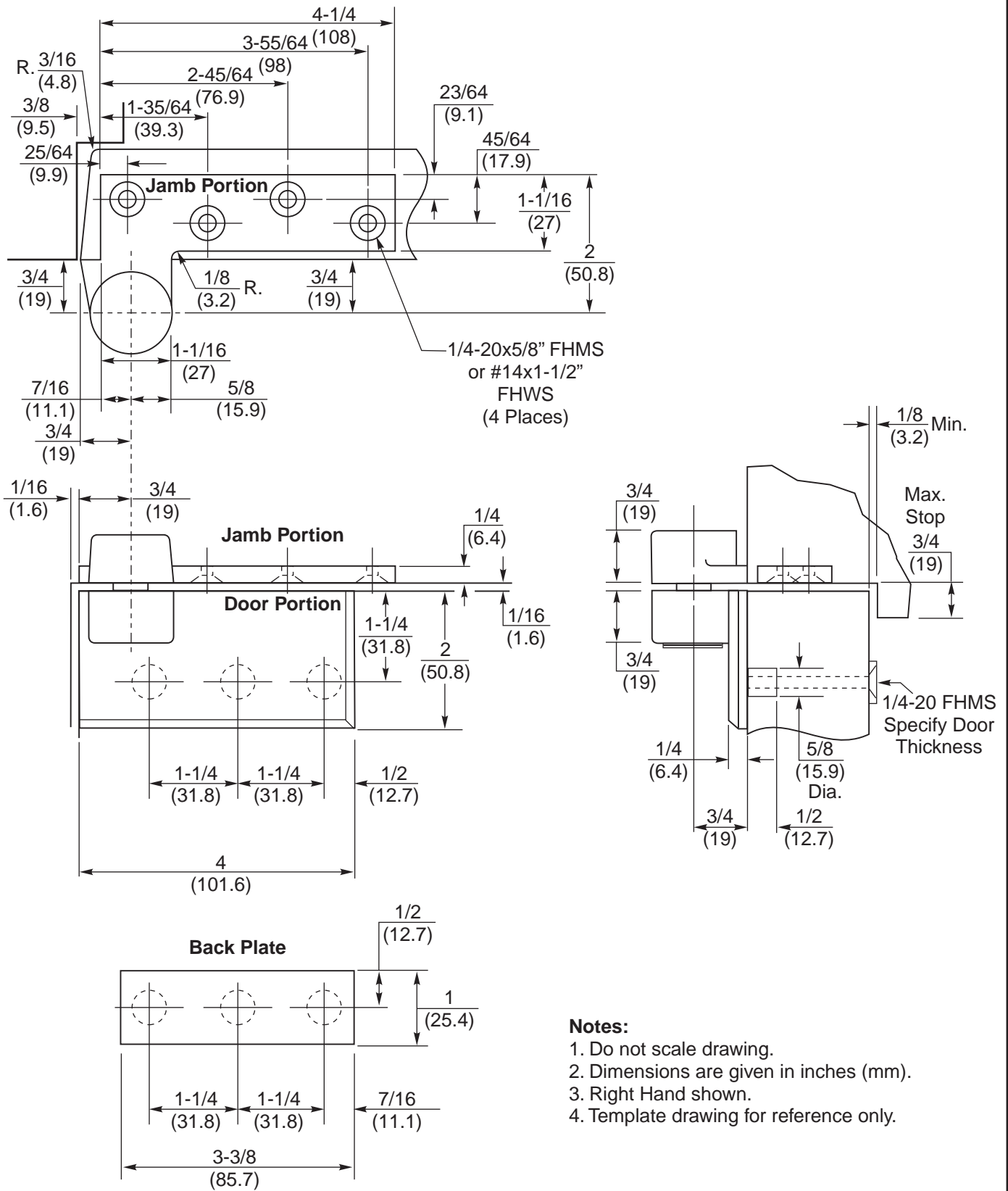
RIXSON®
ASSA ABLOY
 www.rixson.com

TEMPLATE NUMBER

IS-280

DATE

07-09



**280 Top Pivot
3/4" Offset
Half Surface**

RIXSON®
ASSA ABLOY

www.rixson.com

TEMPLATE NUMBER

IS-280

DATE

07-09