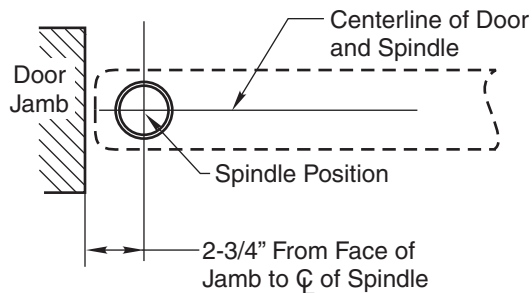
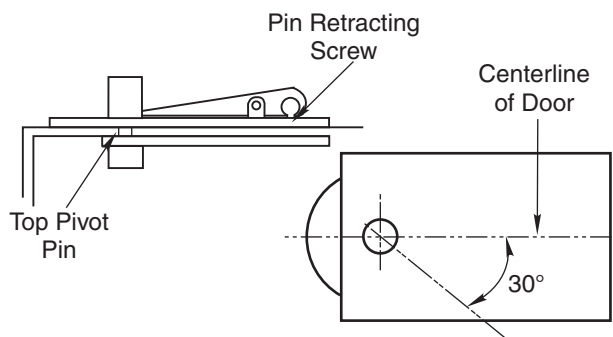
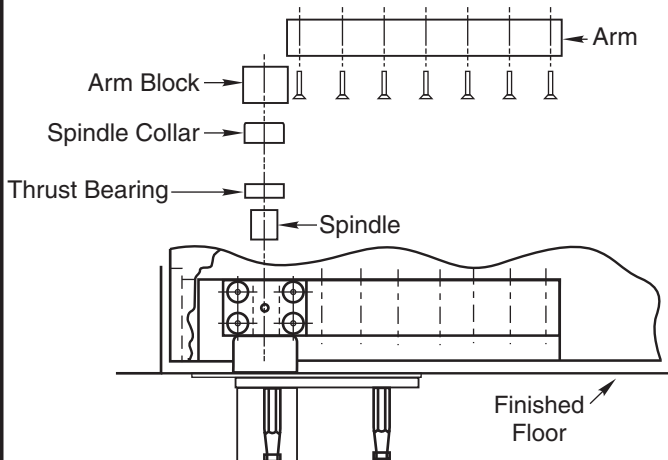
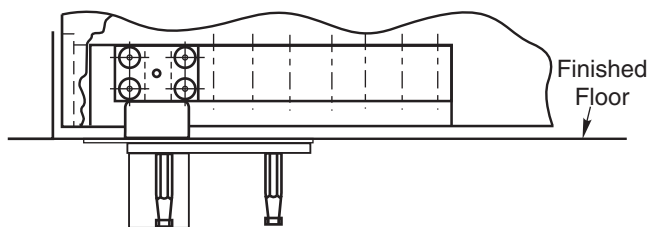


H117-3/4 Pivot Set x 587 Arm



LEVEL IN BOTH DIRECTIONS



1. Locate Pivot

- A. Measure 2-3/4" out from door jamb on centerline of door. This is the location of the spindle center.

2. Install Cement Case in Floor

- A. For floor plate application: Cement case is set 1/16" (1.6mm) below floor level.
- B. For threshold application: Cement case is set flush with floor.
- C. Set cement case in floor and block in position.
- D. Case should be parallel with center line of door.
- E. CEMENT CASE SHOULD BE LEVEL.
- F. Grout in cement case.

3. Install Pivot and Arm

- A. Install top pivot in door per template.
- B. Install top pivot in jamb per template.
- C. Centerline of pivot pin should line up with centerline of spindle. Use plumb line to assure accuracy.
- D. Mortise door for arm.
- E. Install arm in bottom of door.

4. Hang Door

- A. Retract top pivot pin by turning retracting pin screw counterclockwise.
- B. Slide door on spindle. Attach arm cap but do not tighten.
- C. Line up two portions of top pivot and turn pin retracting screw clockwise.
- D. Tighten arm end block screws.
- E. Drill and tap for #8-32 machine screw, centered (screw by others).

**H117-3/4 Pivot Set x 587 Arm
for Heavy Doors
Center Hung**

RIXSON®
ASSA ABLOY

www.rixon.com

TEMPLATE NUMBER

IS-H117-3/4 x 587

DATE

07-09