

**Notes:**

1. Do not scale drawing.
2. Dimensions are given in inches (mm).
3. All lead furnished by others.
4. Right hand shown.
5. Template drawing for reference only.

Door Size	"A" Dim.	"B" Dim.	Max. Lead Thk.
1-3/4 (44.5)	1-1/4 (31.8)	1/4 (6.4)	9/32 (7.1)
2 (50.8)	1-3/8 (35)	5/16 (7.9)	3/8 (9.5)
2-1/4 (57.2)	1-1/2 (38.1)	3/8 (9.5)	15/32 (11.9)
2-1/2 (63.5)	1-5/8 (41.3)	7/16 (11)	9/16 (14.3)
3 (76.2)	2 (50.8)	1/2 (12.7)	3/4 (19)

- For door thicknesses not listed, use next size smaller for prep.
- Table above is based on the assumption that lead is place in center of door.

**L180 Top Pivot  
 3/4" Offset For High Traffic,  
 Heavy or Lead Lined Doors**

**RIXSON®**  
**ASSA ABLOY**

www.rixson.com

TEMPLATE NUMBER

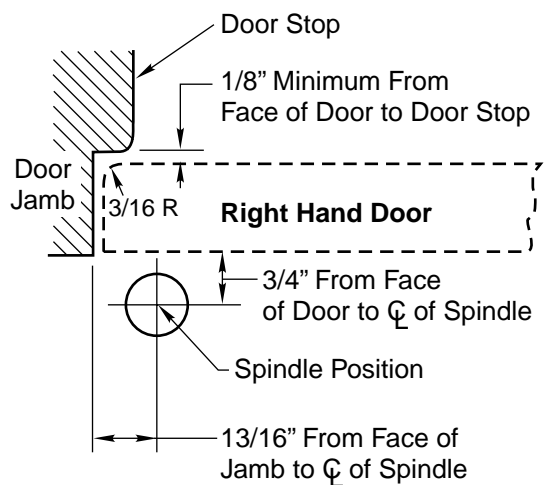
**TP40020**

DATE

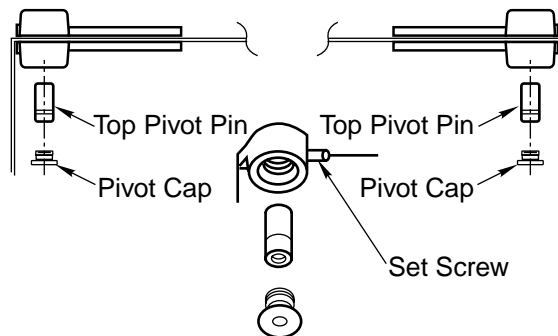
**01-08**

# L180 Top Pivot

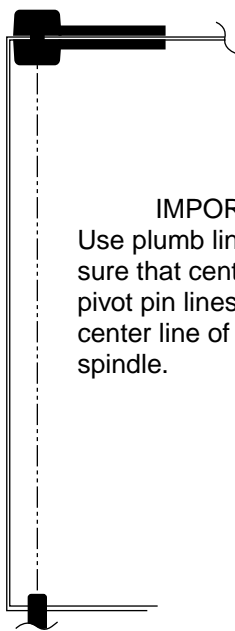
## Location



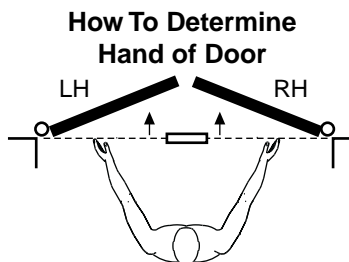
## Attachment



1. Attach door leaf of top pivot to door.
2. Attach jamb leaf of top pivot to frame.
3. If side jamb pivot is used, see required template for instructions.
4. Push top pivot pin into place. Tighten set screw.
5. Attach pivot cap. CAP MUST BE TIGHTENED SECURELY.



**IMPORTANT:**  
 Use plumb line to make sure that center line of top pivot pin lines up with center line of closer/pivot spindle.



Face a door swinging open away from you. If it opens to the right, it is right hand. If it opens to the left, it is left hand.

**L180 Top Pivot  
 3/4" Offset For High Traffic,  
 Heavy or Lead Lined Doors**

**RIXSON®**  
**ASSA ABLOY**  
 www.rixon.com

TEMPLATE NUMBER

**TP40020**

DATE

**01-08**