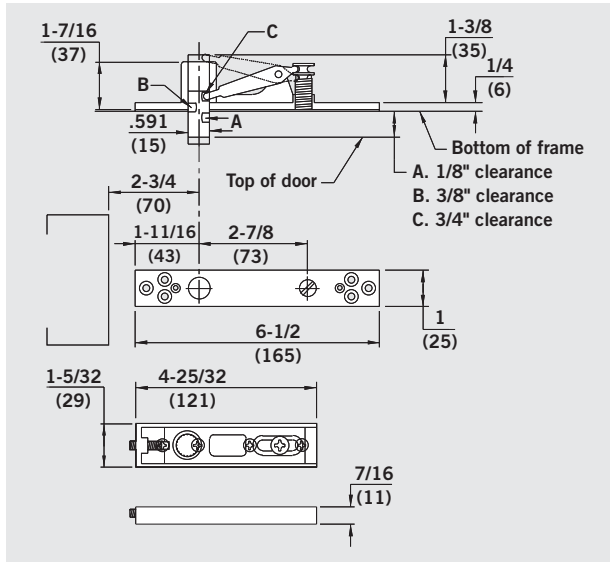
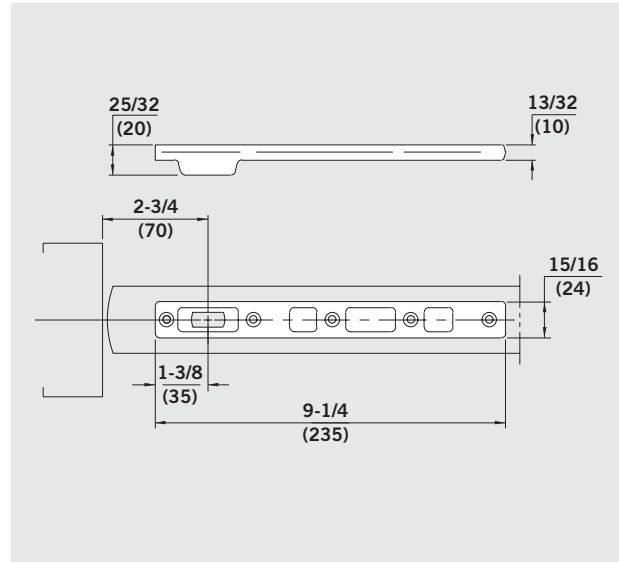


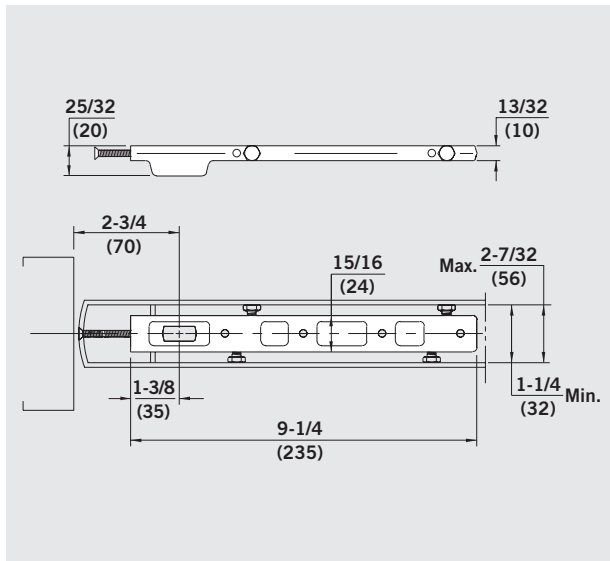
Center Hung



No. 8062 — Walking beam top pivot with cover plate. Lateral adjustment assures the door is plumb. Accommodates top door clearances of 1/8", 3/8", or 3/4". Optional extended pin available for clearances of 3/4", 1", or 1-5/16". Not recommended for use with overhead stops/holders. Use HD8062.



No. 7421 — Center hung bottom arm for steel or wood doors. For use with 7471K and 7471HD floor bearing.



No. 7422 — Center hung bottom arm for aluminum doors. For use with 7471K and 7471HD floor bearing.