

Model 119

Application

Full Mortise
Handed

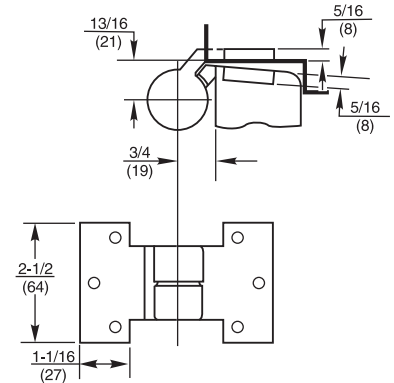
BHMA/ANSI NO: C07382



Product Description & Features

- Not load-bearing
- Maintains door alignment
- Available 3/4" (19mm) offset only
- Non-ferrous base material
- Doors up to 90" (2286mm) in height should use one intermediate pivot. Each additional 30" (762mm) of door weight warrants another intermediate pivot
- Used with 117, 117-1/4, 195 and 127 closers
- Furnished with wood and machine screws

Technical Information



Model M19

Application

Full Mortise
Handed

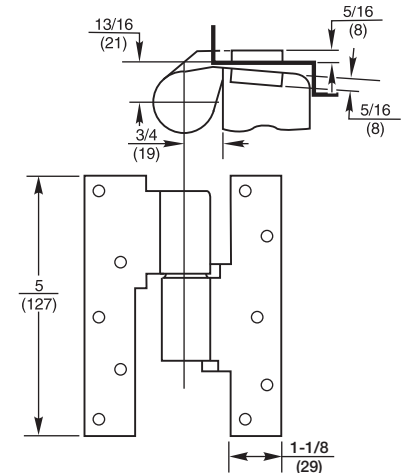
BHMA/ANSI NO: C07321/C07371



Product Description & Features

- Not load-bearing
- Maintains door alignment
- Aids in installing floor closers and bottom pivots
- For 20-minute label suffix "-20" to the part number
- Non-ferrous base metal
- 3/4" (19mm) offset
- Available for 1-1/2" (38mm) offset
- Available for fire door assemblies (*ferrous material*) – specify FM19
- Doors up to 90" (2286mm) in height should use one intermediate pivot. Each additional 30" (762mm) warrants another intermediate pivot
- Furnished with wood and machine screws

Technical Information

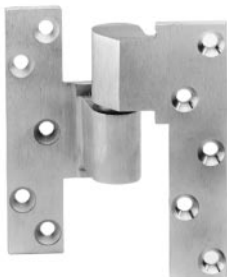


Model M190

Application

Heavy-Duty Full Mortise
Handed

BHMA/ANSI NO: C07321/C07371



Product Description & Features

Used when frame condition does not allow standard top pivot

- Lateral load-bearing
- Maintains door alignment
- Aids in installing floor closers and bottom pivots
- Heavy-duty needle bearing
- Non-ferrous base metal
- 3/4" (19mm) offset standard
- Available for 1-1/2" (38mm) offset
- Available for fire door assemblies (*ferrous material*) – specify FM190
- For 20-minute label suffix "-20" to part number
- Doors up to 90" (2286mm) in height should use one intermediate pivot. Each additional 30" (762mm) warrants another intermediate pivot
- Furnished with wood and machine screws

Technical Information

