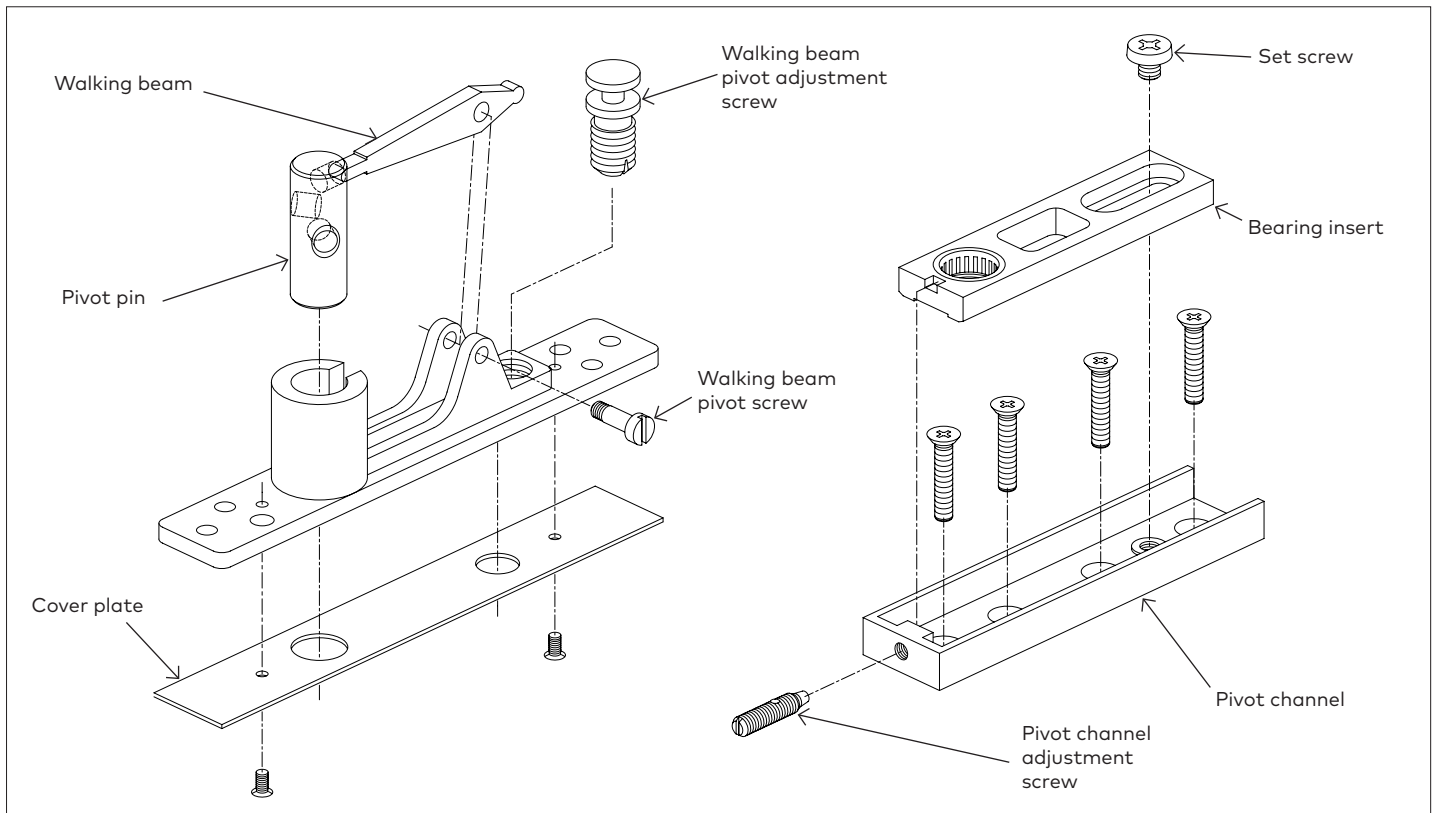


Installation Instructions

Center Hung Top Pivot For use with 8062, 8062 Ext Pin

1.1 Install pivot

Fig. 1



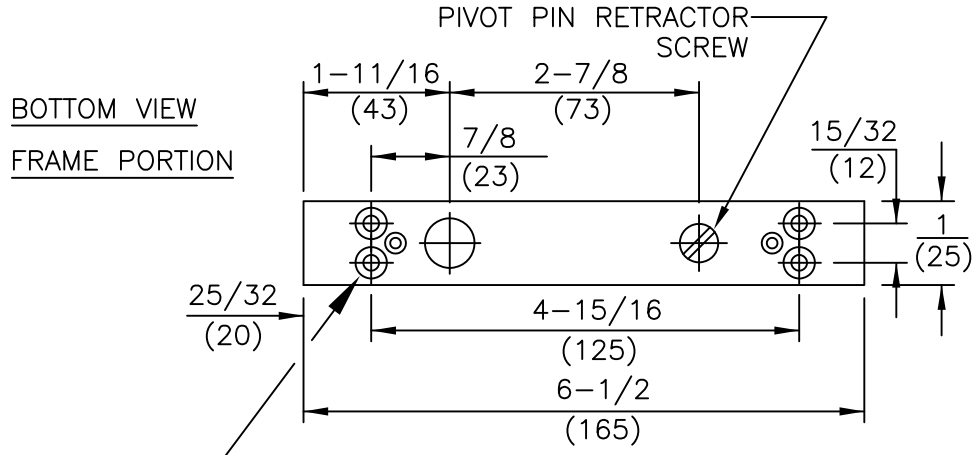
- 1.1.1 Determine the clearance between the door and header and adjust the projection of the pivot pin, if required.
 - The pivot pin projection allows 1/8" [3] clearance as shipped from the factory.
- 1.1.2 To change the projection of pivot pin or to install the (8062 Ext Pin) extended pivot pin, the following procedure is recommended:
 - 1.1.3 Remove the walking beam pivot screw.
 - 1.1.4 Push the pivot pin out until the walking beam is disengaged.
 - 1.1.5 Install extended pivot pin and engage walking beam into appropriate hole in pivot pin to obtain required projection.
 - 1.1.6 Be sure opposite end of walking beam is engaged in walking beam pivot adjustment screw.
 - 1.1.7 Reinstall walking beam pivot screw.
 - 1.1.8 Retract pivot pin and install pivot into header.
 - 1.1.9 Install cover plate.
 - 1.1.10 Fasten pivot channel in top of door.
 - 1.1.11 Turn pivot channel adjustment screw approximately halfway into pivot channel.
 - 1.1.12 Place bearing insert into pivot channel.
 - 1.1.13 Adjust pivot point accordingly.
 - 1.1.14 Lock bearing insert in place with set screw.
 - 1.1.15 Install door and engage pivot pin by turning walking beam pivot adjustment screw clockwise.

NOTES

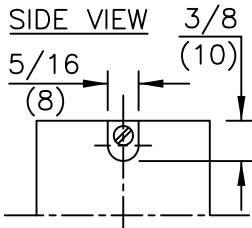
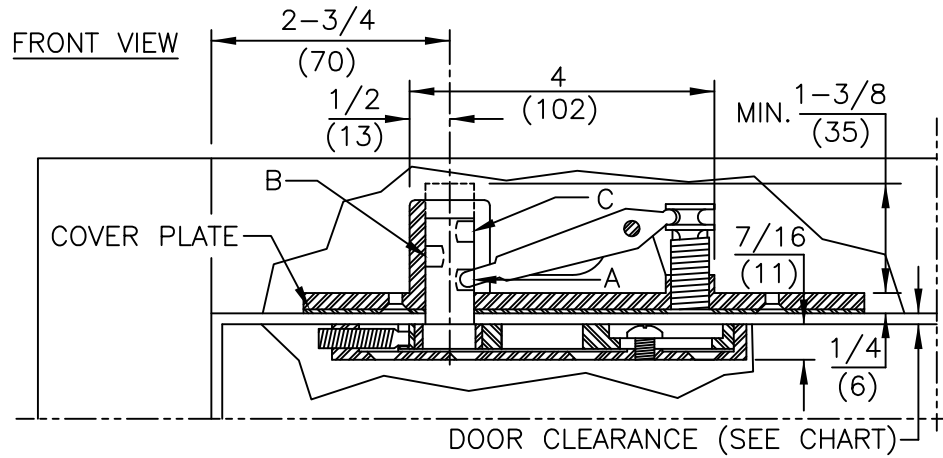
1. DO NOT SCALE DRAWING.
2. DIMENSIONS ARE IN INCHES/(MM).
3. ALL NECESSARY REINFORCING FOR PIVOTS BY OTHERS.
4. PIVOT PIN DIAMETER .591/(15MM).
5. PIVOT PIN PROJECTION IS ADJUSTABLE. SEE CHART FOR DOOR CLEARANCES.

DOOR CLEARANCE

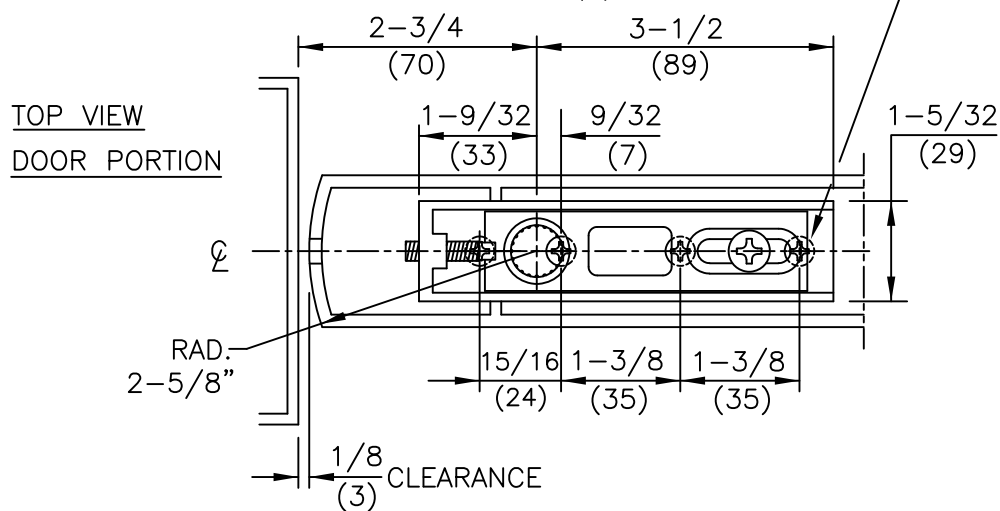
POSITION	STANDARD PIN	EXTENDED PIN
A	1/8"(3)	3/4"(19)
B	3/8"(10)	1"(25)
C	3/4"(19)	1-5/16"(33)



FOR 10-32 MACHINE SCREWS USE No.21 DRILL
 FOR WOOD SCREWS USE No.29 DRILL
 FOUR (4) HOLES FOR MOUNTING PIVOT



FOR 10-32 MACHINE SCREWS USE No.21 DRILL
 FOR WOOD SCREWS USE No.29 DRILL
 FOUR (4) HOLES IN DOOR

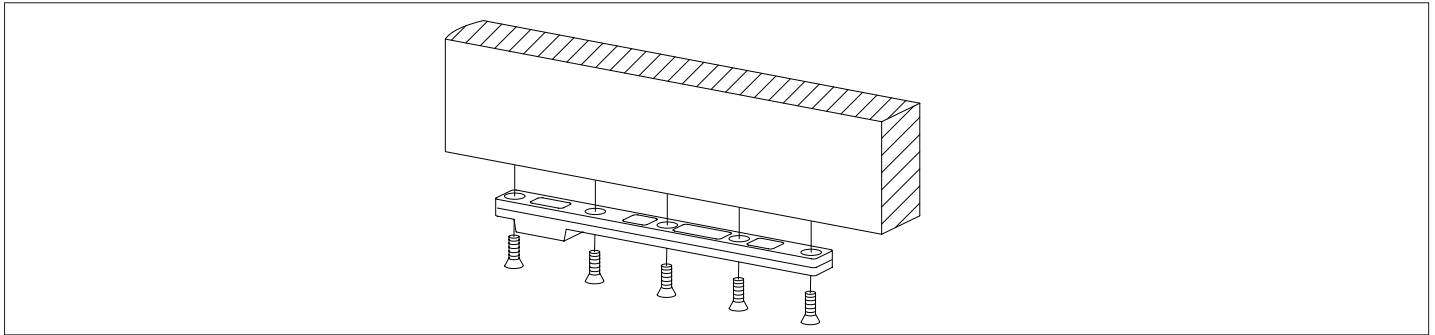


Installation Instructions

Center Hung Bottom Arm 7421

1.1 Install bottom arm (7421)

Fig. 1

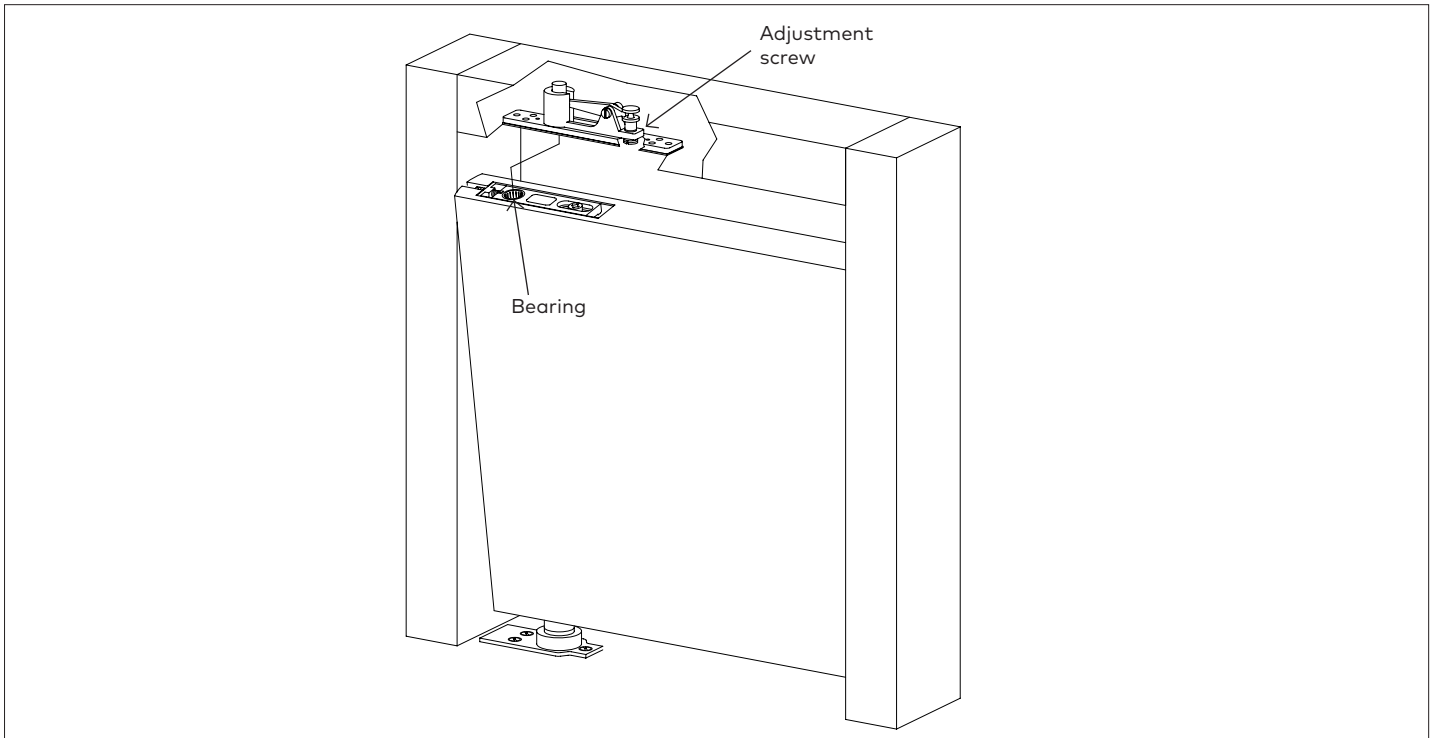


1.1.1 Prepare door according to template.

1.1.2 Attach arm to bottom of door with 5 wood or machine screws.

1.2 Install door

Fig. 2



1.2.1 With door parallel to frame, place bottom arm onto spindle.

1.2.2 Rotate door approximately 90°.

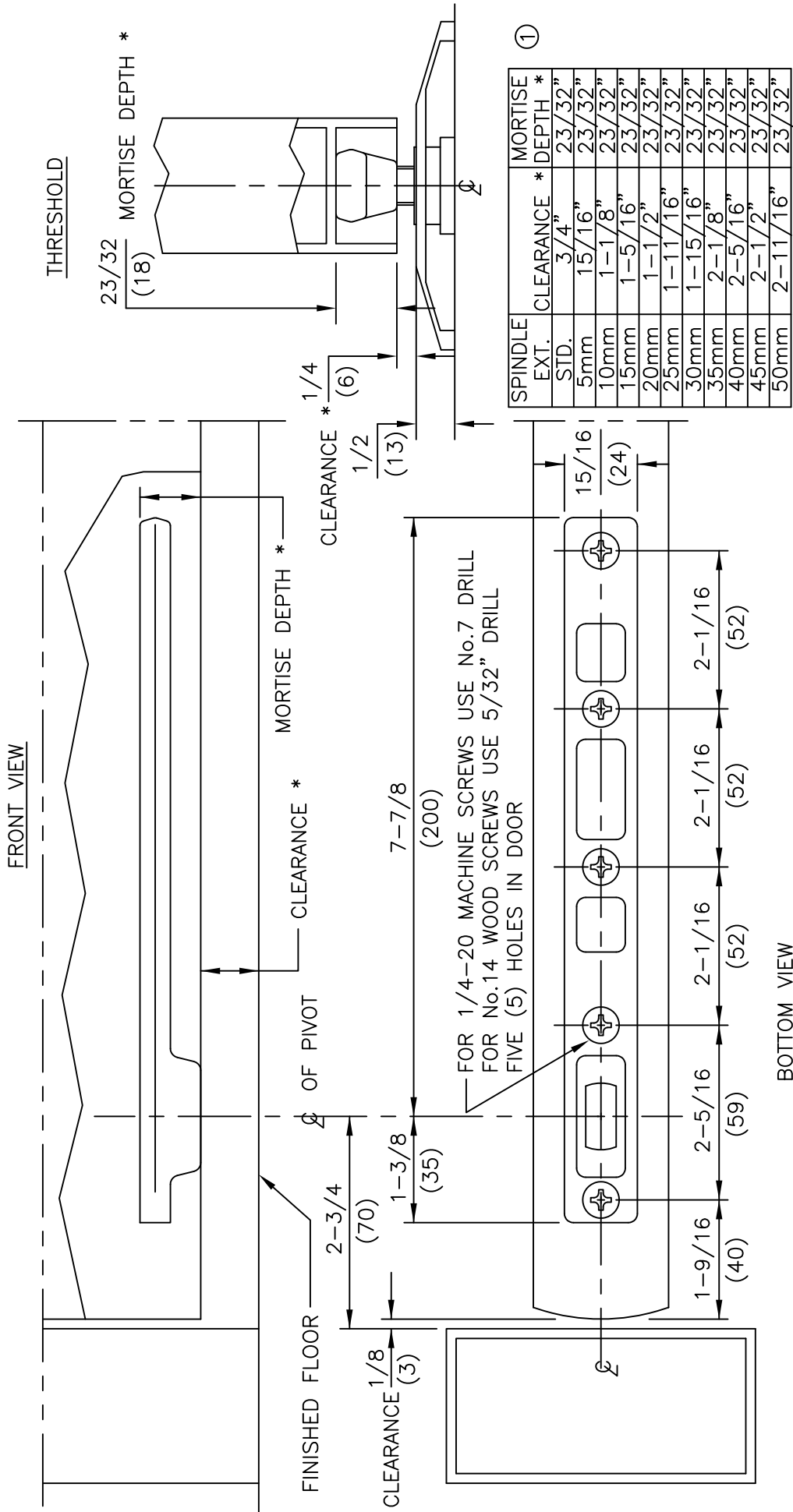
1.2.3 Align bearing with pivot pin.

1.2.4 Engage pivot pin by turning adjustment screw clockwise.

1.2.5 Check to make sure pivot pin is fully engaged in door portion of pivot.

NOTES

1. DO NOT SCALE DRAWING.
2. DIMENSIONS ARE IN INCHES/(MM).
3. ALL NECESSARY REINFORCEMENT FOR ARM BY OTHERS.



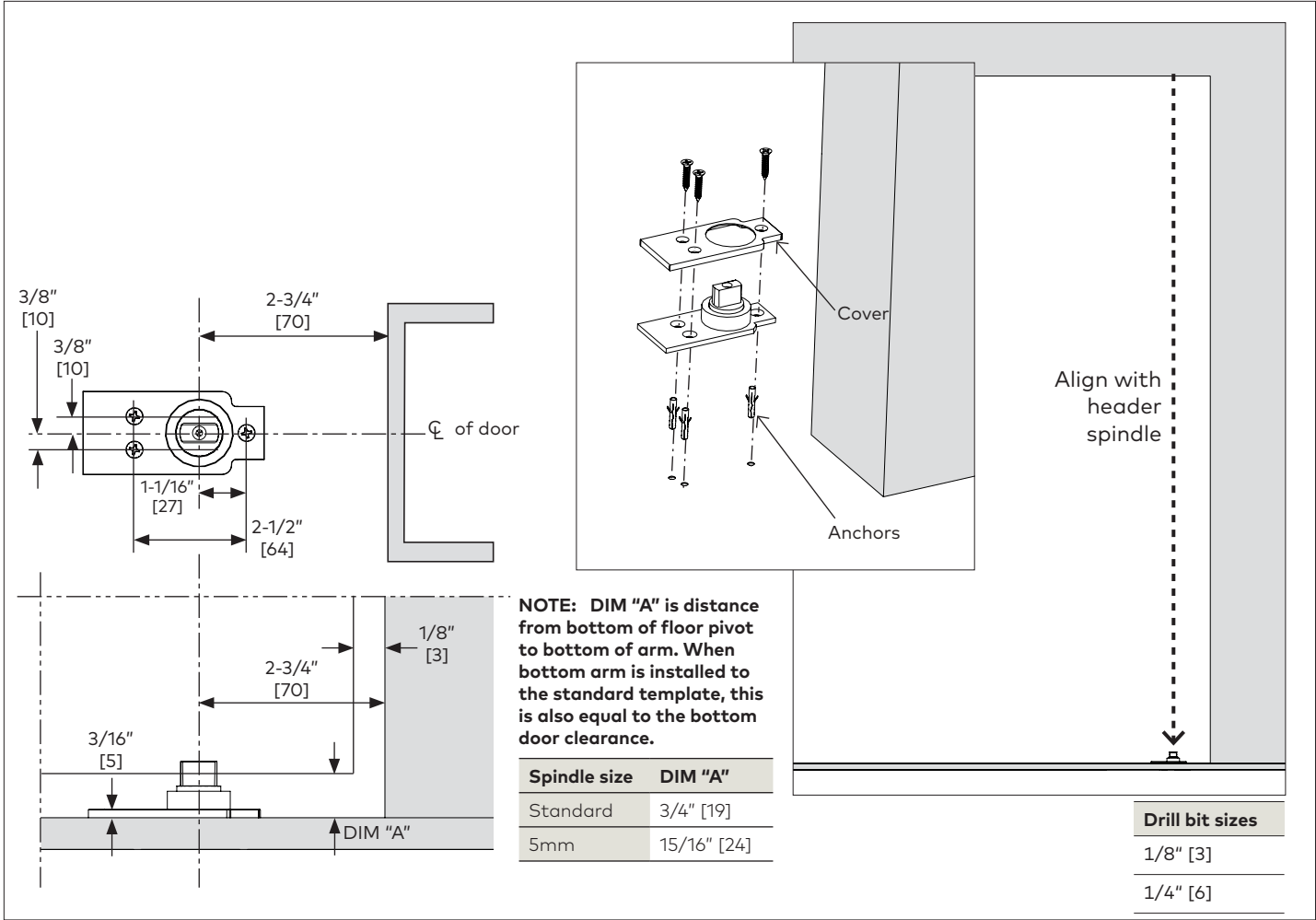
ITEM No. 7421
CENTER HUNG BOTTOM ARM
FOR USE WITH 7471K FLOOR BEARING



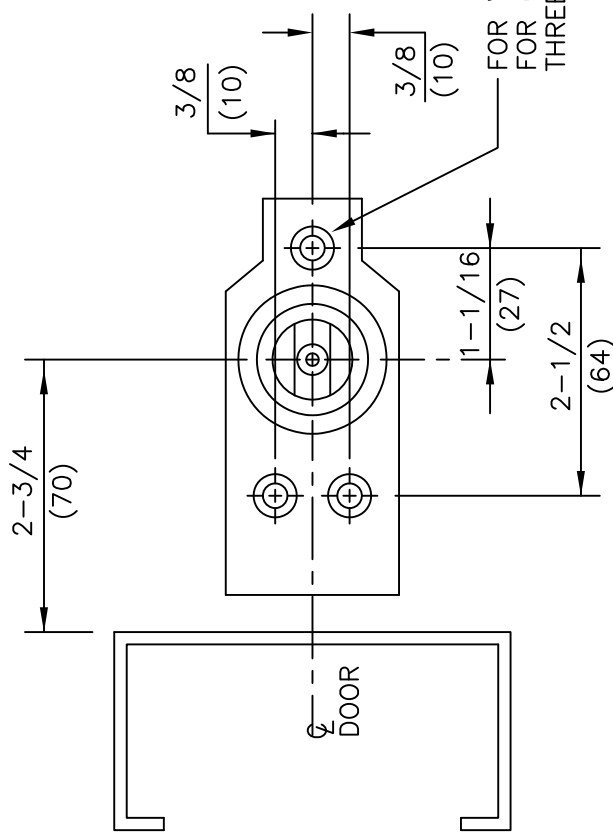
dormakaba USA, INC.
800 523 8483

Installation Instructions

7471K Center Hung Floor Bearing

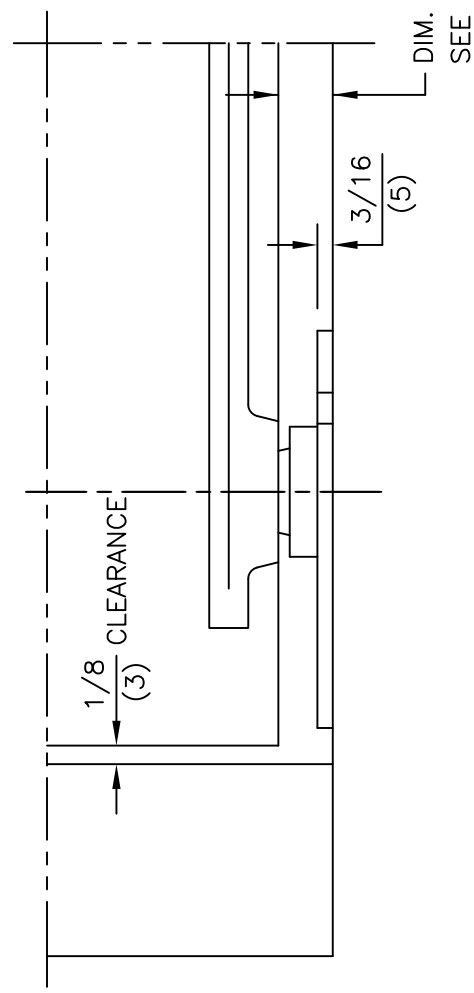


- 1.1 Using a plumb bob, align header spindle with bottom pivot spindle.
- 1.2 Mark and drill holes in flooring surface.
 - Wood Floors: 1/8" [3] drill bit.
 - Concrete Floors: Drill 1" [25] deep holes, using 1/4" [6] drill bit.
- 1.3 Insert anchors, if necessary.
- 1.4 Ensure pivot is aligned and plumb.
- 1.5 Secure floor bearing and cover using included fasteners.



FOR WOOD FLOORS USE 1/8" DRILL
 FOR CONCRETE FLOORS USE 1/4" DRILL 1" DEEP
 THREE (3) HOLES

- NOTES:
1. DO NOT SCALE DRAWING.
 2. DIMENSIONS ARE IN INCHES\MM.
 3. DIMENSION "A" IS DISTANCE FROM BOTTOM OF PIVOT TO BOTTOM OF ARM. WHEN BOTTOM ARM IS INSTALLED TO THE STANDARD TEMPLATE, THIS IS ALSO EQUAL TO THE BOTTOM DOOR CLEARANCE.



DIM. "A"
 SEE NOTE #3

SPINDLE SIZE	DIM. "A"
STD.	11/16 (17)
5mm	7/8 (22)
10mm	1-1/16 (27)
15mm	1-1/4 (32)
20mm	1-7/16 (37)
25mm	1-5/8 (42)
30mm	1-7/8 (47)
35mm	2-1/16 (52)
40mm	2-1/4 (57)
45mm	2-7/16 (62)

ITEM No. 7471K
 CENTER HUNG FLOOR BEARING INSTALLATION
 FOR USE WITH 7421, 7422 BOTTOM ARMS

