

# 7471HD HEAVY DUTY FLOOR BEARING

## 3/4" OFFSET, 1-1/2" OFFSET, CENTER HUNG

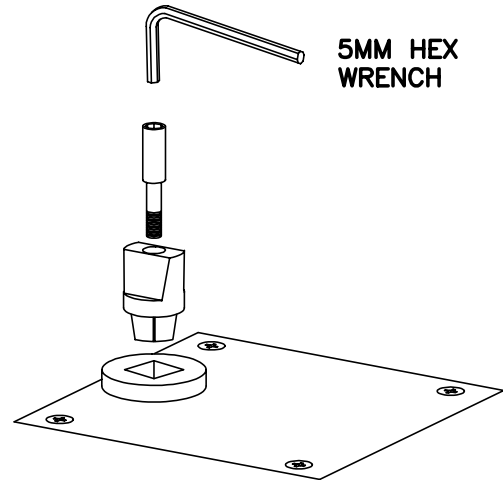


Prepare floor according to template.  
 Grout in floor bearing with anchors and attach cover plate.  
 Make sure spindle center line is in proper alignment with top pivot. Bearing should be grouted in place so that it is square with frame, level in all directions and top of cover plate will be flush with finished floor. For threshold applications, drill a 1-1/4" diameter clearance hole in the threshold coinciding with the spindle location. Top of floor bearing cement case is flush with finished floor line for threshold applications. Anchor floor bearing first, then the threshold in a usual fashion. Attach spindle with spindle screw using 5mm hex wrench.

MODEL No.

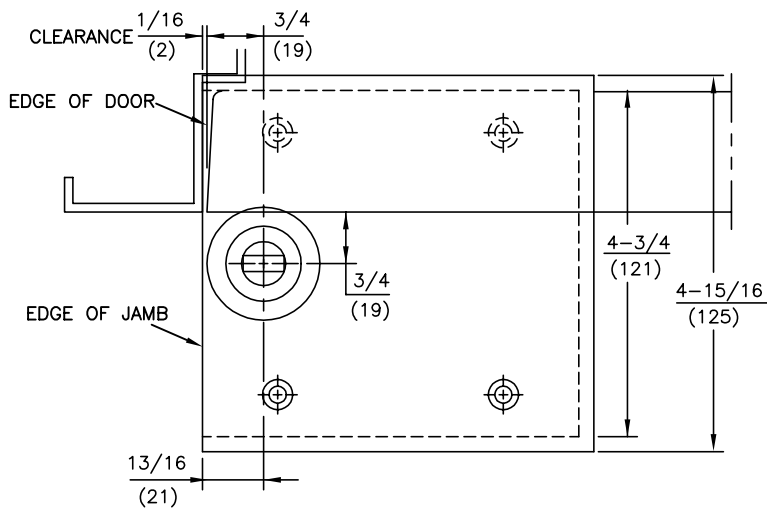
7471HD

FINISH



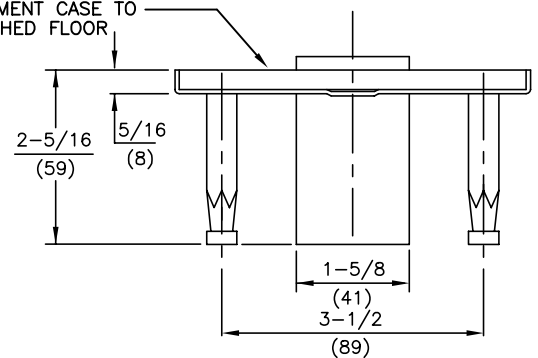
**NOTES:**

1. DO NOT SCALE DRAWING.
2. DIMENSIONS ARE IN INCHES\MM.
3. RIGHT HAND DOOR SHOWN.



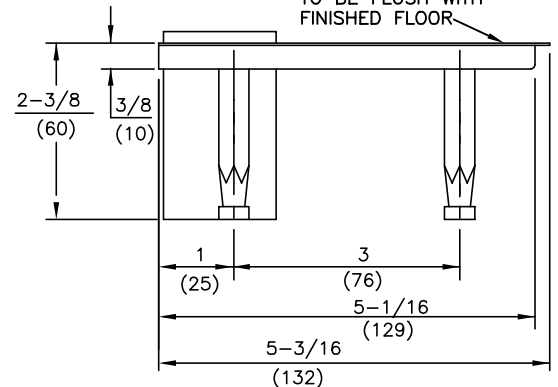
**3/4" OFFSET  
 STD. OR LEAD LINED**

TOP SURFACE OF CEMENT CASE TO BE FLUSH WITH FINISHED FLOOR



WITH THRESHOLD

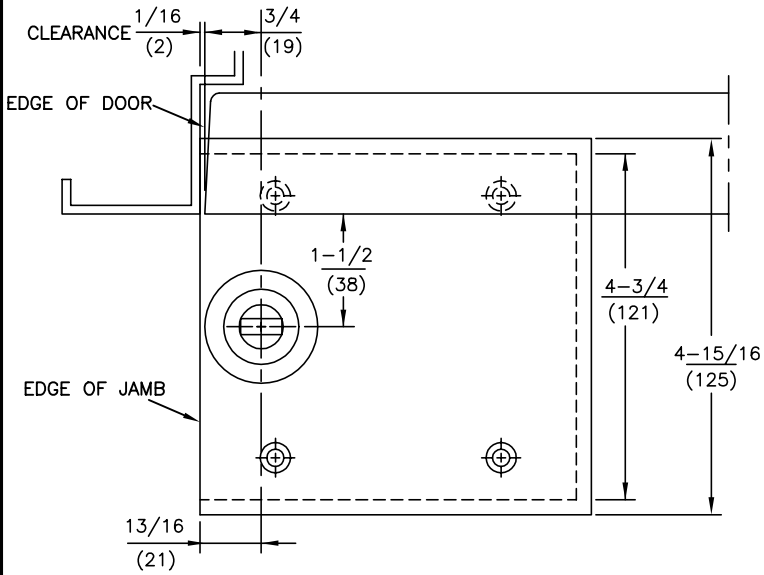
BASE COVER PLATE TO BE FLUSH WITH FINISHED FLOOR



WITHOUT THRESHOLD

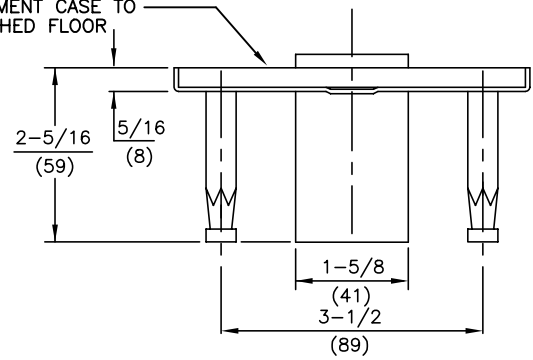
**NOTES:**

1. DO NOT SCALE DRAWING.
2. DIMENSIONS ARE IN INCHES\MM.
3. RIGHT HAND DOOR SHOWN.



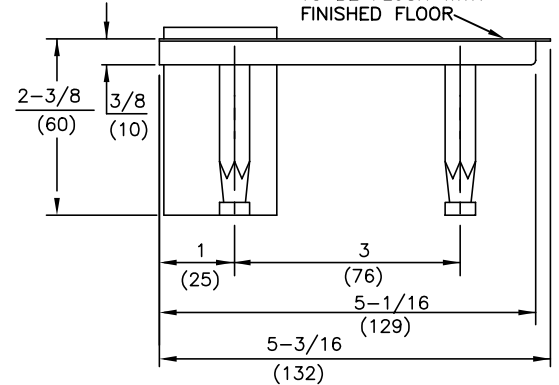
**1-1/2" OFFSET**

TOP SURFACE OF CEMENT CASE TO BE FLUSH WITH FINISHED FLOOR



**WITH THRESHOLD**

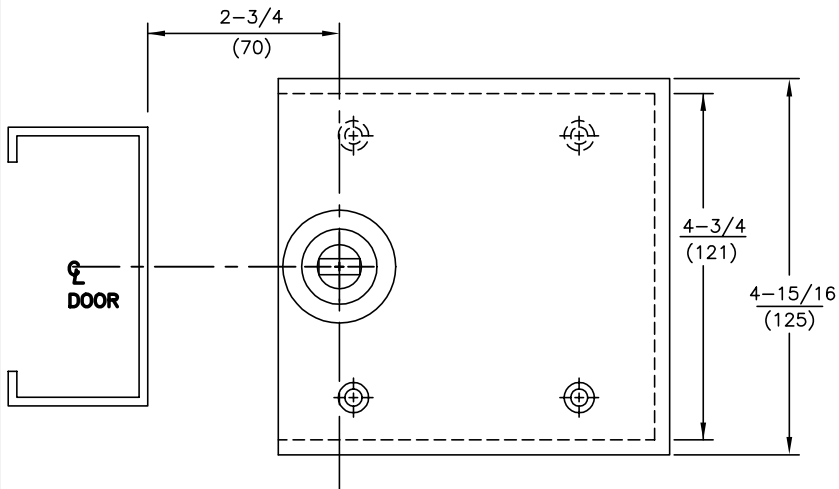
BASE COVER PLATE TO BE FLUSH WITH FINISHED FLOOR



**WITHOUT THRESHOLD**

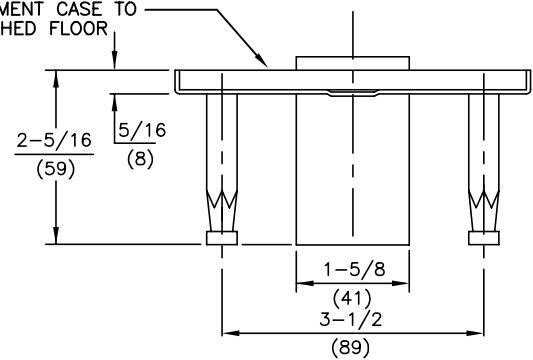
**NOTES:**

1. DO NOT SCALE DRAWING.
2. DIMENSIONS ARE IN INCHES\MM.
3. RIGHT HAND DOOR SHOWN.



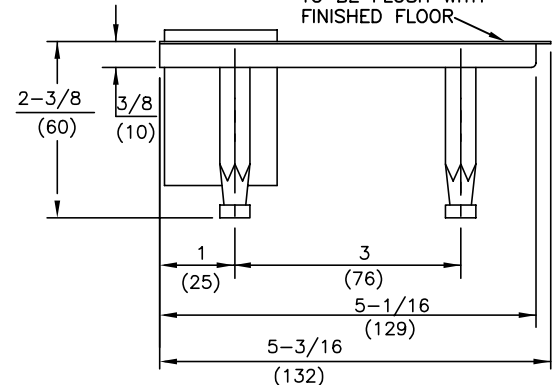
**CENTER HUNG**

TOP SURFACE OF CEMENT CASE TO BE FLUSH WITH FINISHED FLOOR



**WITH THRESHOLD**

BASE COVER PLATE TO BE FLUSH WITH FINISHED FLOOR



**WITHOUT THRESHOLD**

# CENTER HUNG BOTTOM ARM

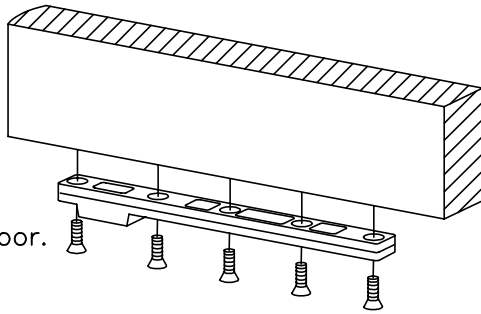
MODEL No.

- 1) Prepare door according to template.
- 2) Fasten arm to door.

7421

Install bottom arm #7421.

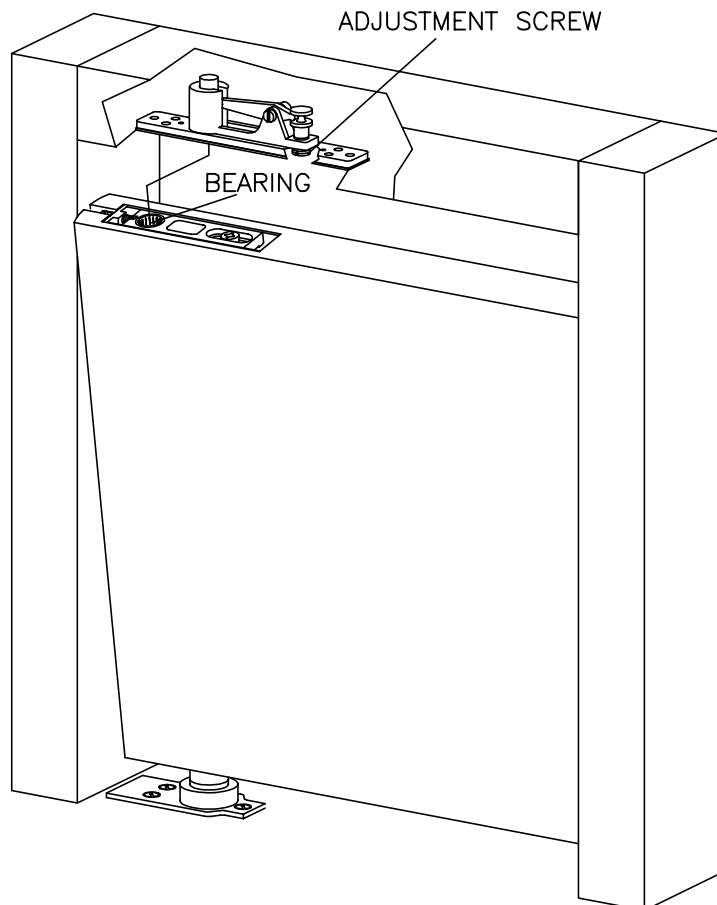
Attach arm to bottom of door with five wood or machine screws.



- 3) Install door.

With door parallel to frame, place bottom arm onto spindle. Rotate door approximately 90°. Align bearing with pivot pin. Engage pivot pin by turning adjustment screw clockwise. Check to make sure pivot pin is fully engaged in door portion of pivot.

FINISH

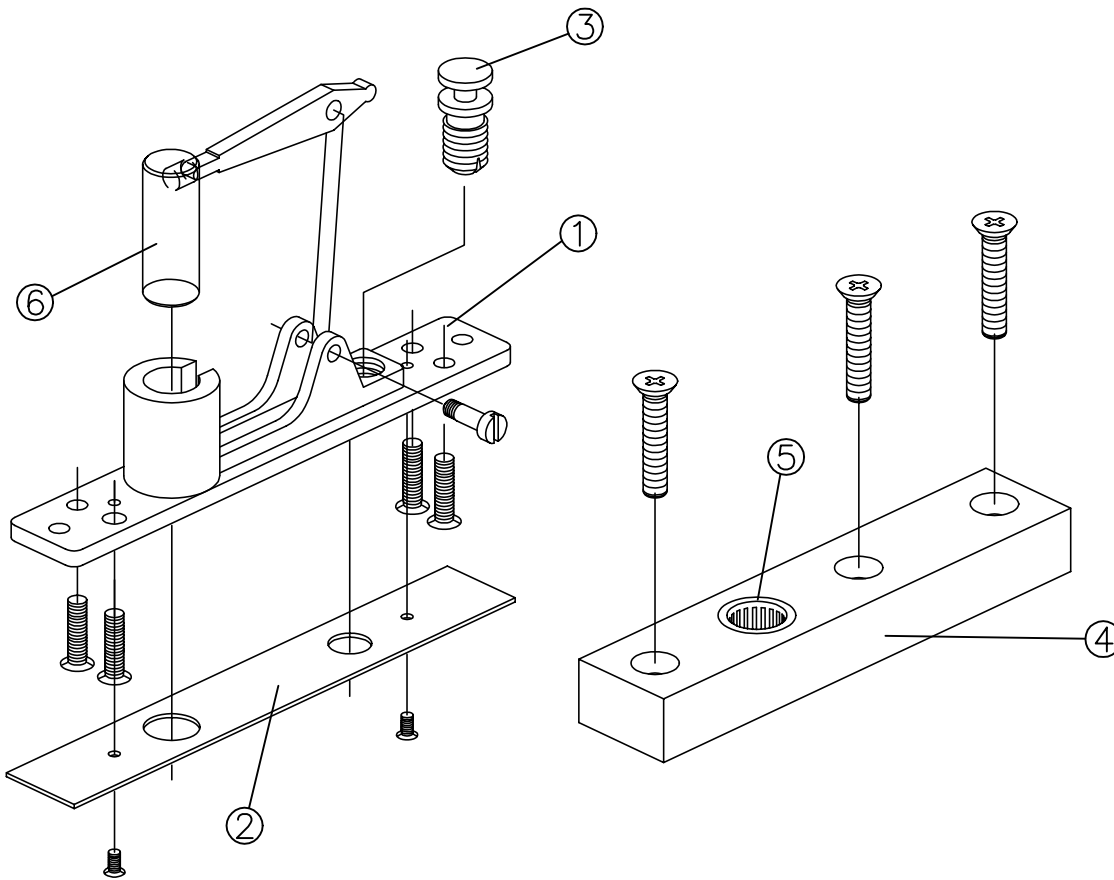


# HEAVY DUTY CENTER HUNG TOP PIVOT



MODEL No.

HD8062



FINISH

1. Prepare door and header according to template.
2. Fasten header portion of pivot (1). Fasten cover plate (2). Fully retract pivot pin (6) by turning adjustment screw (3) counterclockwise. Fasten door portion of pivot (4).
3. Place bottom of door on floor closer spindle or floor bearing. Raise door to a near verticle position. Rotate door to approximately a 90° position. Align bearing (5) with pivot pin (6) in header. Engage pivot pin (6) fully by turning adjustment screw (3) clockwise.