

7471HD HEAVY DUTY FLOOR BEARING

3/4" OFFSET, 1-1/2" OFFSET, CENTER HUNG

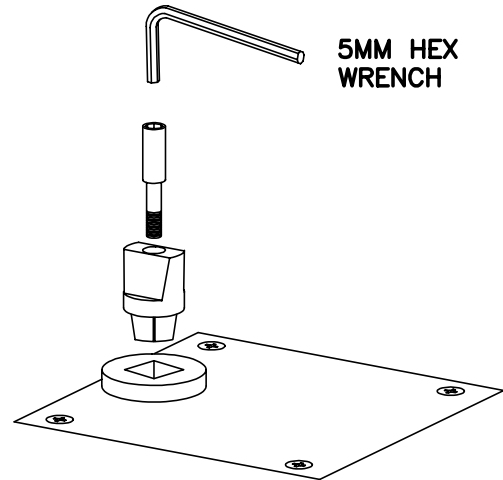


Prepare floor according to template.
 Grout in floor bearing with anchors and attach cover plate.
 Make sure spindle center line is in proper alignment with top pivot. Bearing should be grouted in place so that it is square with frame, level in all directions and top of cover plate will be flush with finished floor. For threshold applications, drill a 1-1/4" diameter clearance hole in the threshold coinciding with the spindle location. Top of floor bearing cement case is flush with finished floor line for threshold applications. Anchor floor bearing first, then the threshold in a usual fashion. Attach spindle with spindle screw using 5mm hex wrench.

MODEL No.

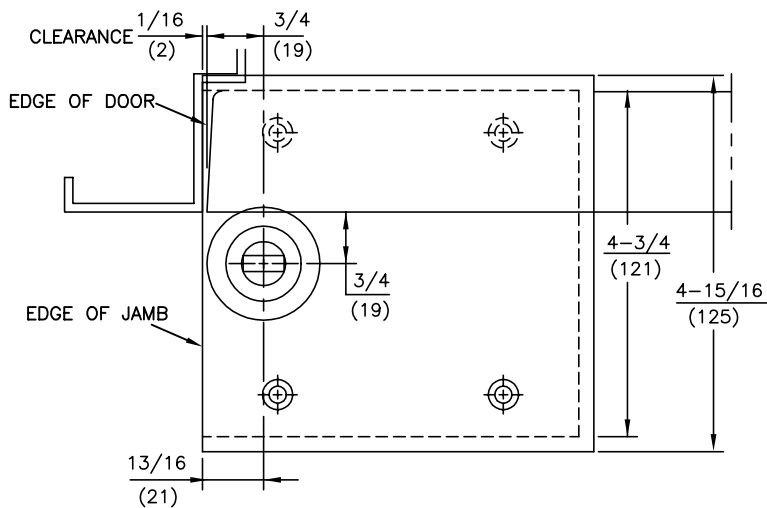
7471HD

FINISH



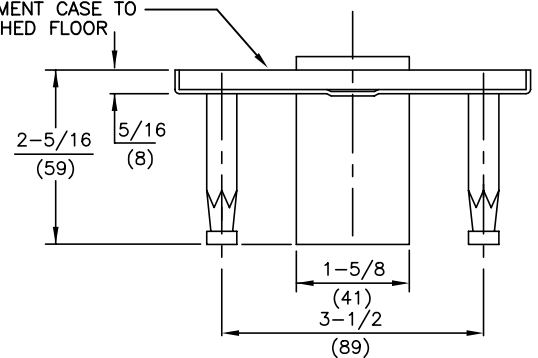
NOTES:

1. DO NOT SCALE DRAWING.
2. DIMENSIONS ARE IN INCHES\MM.
3. RIGHT HAND DOOR SHOWN.



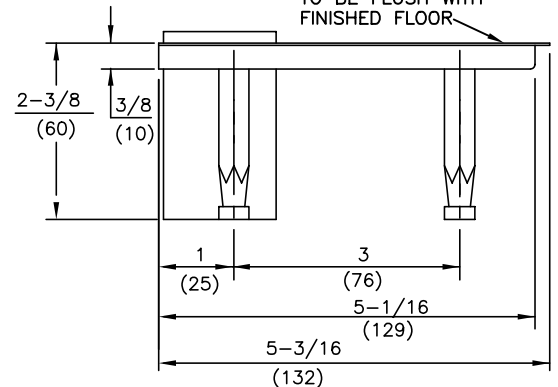
**3/4" OFFSET
 STD. OR LEAD LINED**

TOP SURFACE OF CEMENT CASE TO BE FLUSH WITH FINISHED FLOOR



WITH THRESHOLD

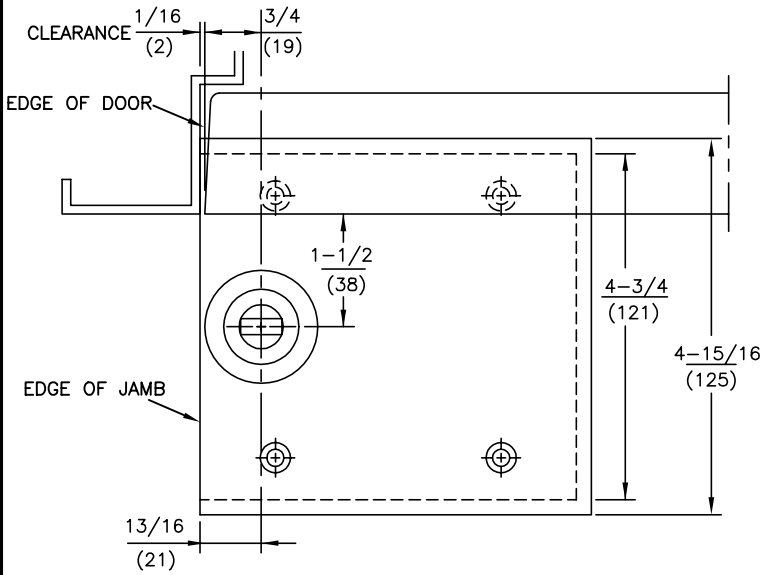
BASE COVER PLATE TO BE FLUSH WITH FINISHED FLOOR



WITHOUT THRESHOLD

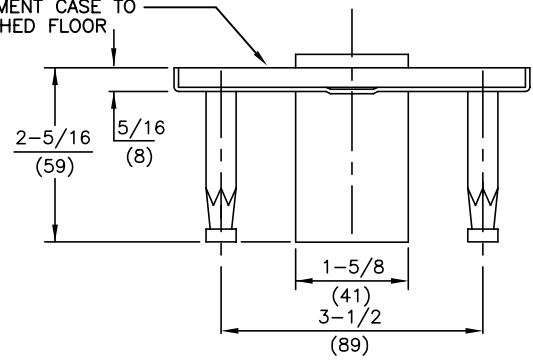
NOTES:

1. DO NOT SCALE DRAWING.
2. DIMENSIONS ARE IN INCHES\MM.
3. RIGHT HAND DOOR SHOWN.



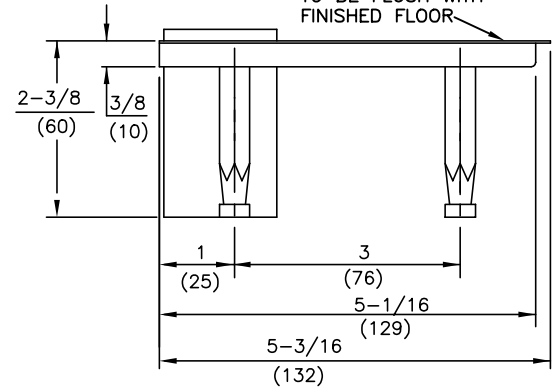
1-1/2" OFFSET

TOP SURFACE OF CEMENT CASE TO BE FLUSH WITH FINISHED FLOOR



WITH THRESHOLD

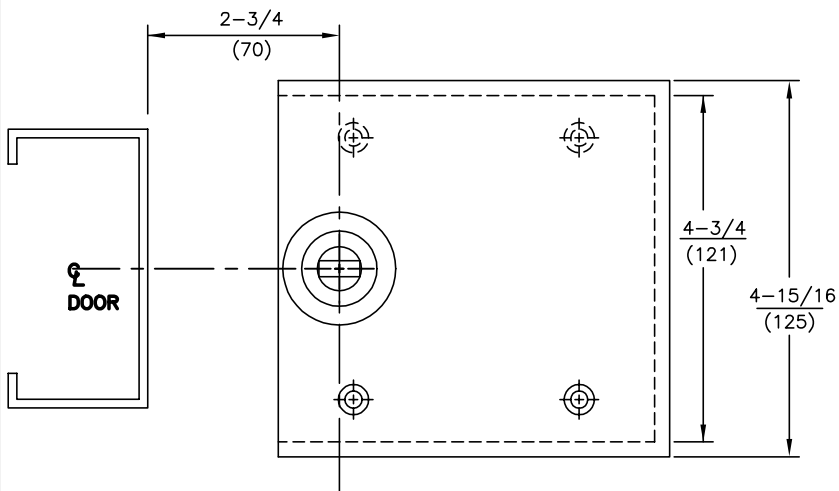
BASE COVER PLATE TO BE FLUSH WITH FINISHED FLOOR



WITHOUT THRESHOLD

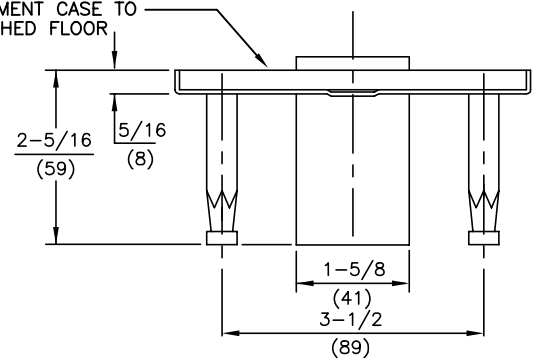
NOTES:

1. DO NOT SCALE DRAWING.
2. DIMENSIONS ARE IN INCHES\MM.
3. RIGHT HAND DOOR SHOWN.



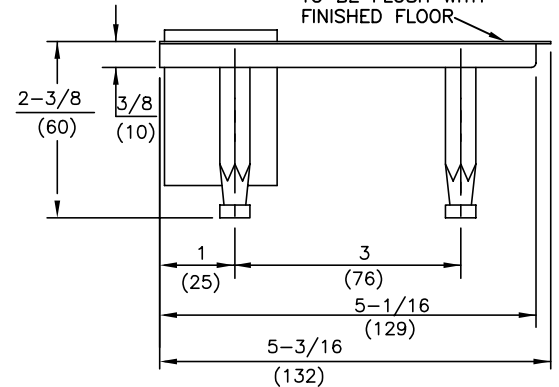
CENTER HUNG

TOP SURFACE OF CEMENT CASE TO BE FLUSH WITH FINISHED FLOOR



WITH THRESHOLD

BASE COVER PLATE TO BE FLUSH WITH FINISHED FLOOR



WITHOUT THRESHOLD

CENTER HUNG BOTTOM ARM

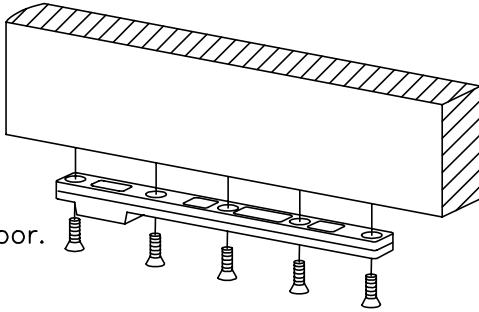
MODEL No.

- 1) Prepare door according to template.
- 2) Fasten arm to door.

7421

Install bottom arm #7421.

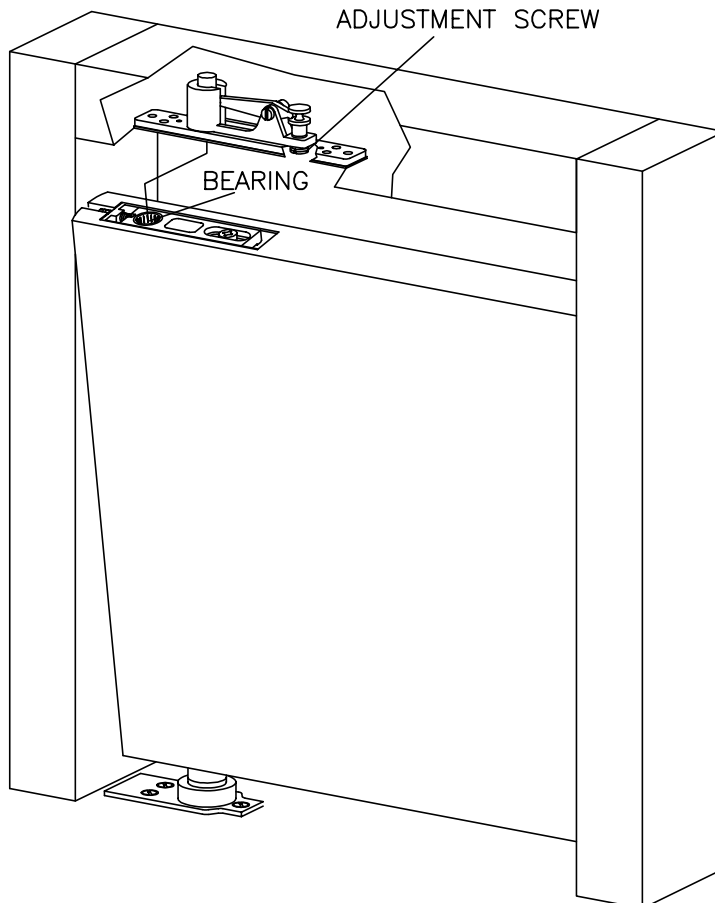
Attach arm to bottom of door with five wood or machine screws.



- 3) Install door.

With door parallel to frame, place bottom arm onto spindle. Rotate door approximately 90°. Align bearing with pivot pin. Engage pivot pin by turning adjustment screw clockwise. Check to make sure pivot pin is fully engaged in door portion of pivot.

FINISH

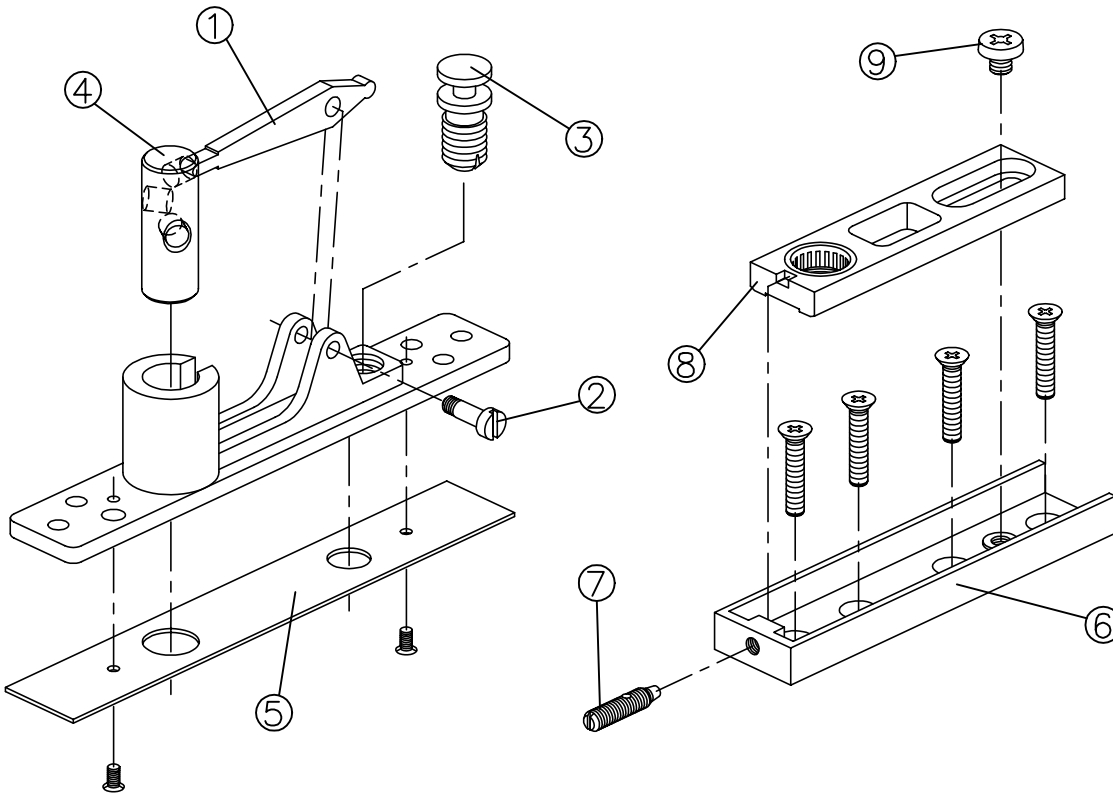


CENTER HUNG TOP PIVOT



MODEL No.

- 8062
- 8062 EXT PIN



FINISH

1. Determine the clearance between the door and header and adjust the projection of the pivot pin, if required. The pivot pin projection allows 1/8" clearance as shipped from the factory.
2. To change the projection of pivot pin or to install the (8062 EXT PIN) extended pivot pin, the following procedure is recommended:
 Remove the walking beam pivot screw (2) and push the pivot pin (4) out until the walking beam (1) is disengaged. Install extended pivot pin and engage walking beam into appropriate hole in pivot pin to obtain required projection. Be sure opposite end of walking beam is engaged in adjustment screw. (3) Reinstall walking beam pivot screw (2).
3. Retract pivot pin and install pivot into header. Install cover plate (5).
4. Fasten pivot channel (6) in top of door. Turn adjustment screw (7) approximately halfway into pivot channel. Place bearing insert (8) into pivot channel. Adjust pivot point accordingly. Lock bearing insert in place with set screw (9).
5. Install door and engage pivot pin by turning adjustment screw (3) clockwise.