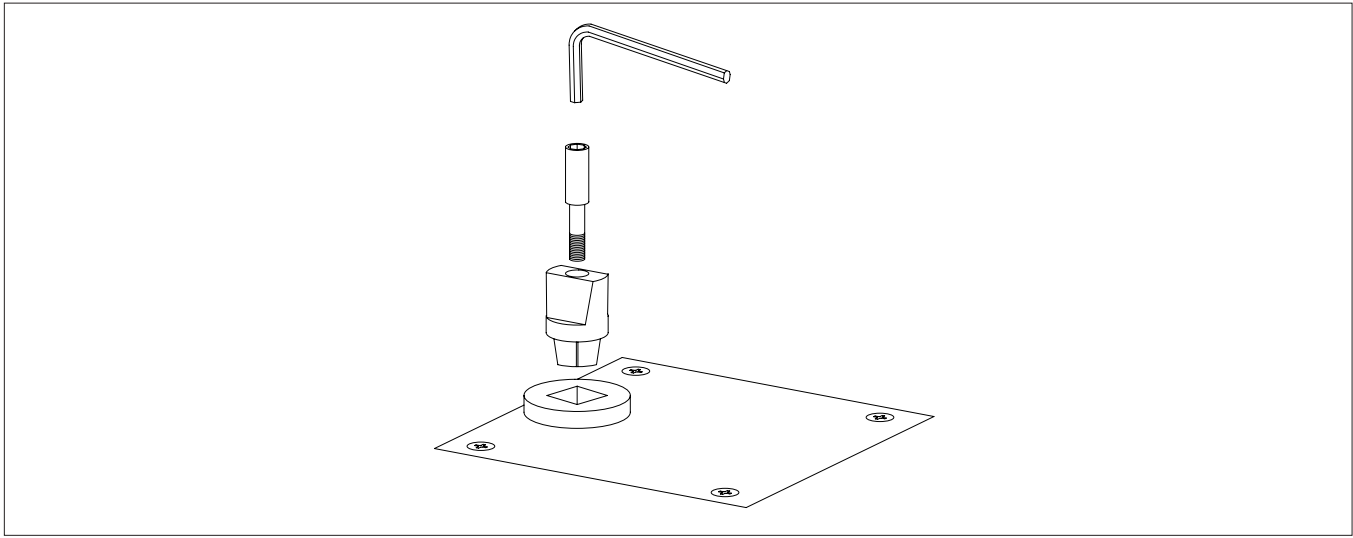


# Installation Instructions

## 7471HD Heavy Duty Floor Bearing 3/4" Offset, 1-1/2" Offset, Center Hung

### 1.1 Install pivot



- 1.1.1 Prepare floor according to templates.
- 1.1.2 Grout in floor bearing with anchors.
- 1.1.3 Attach cover plate.

#### NOTES:

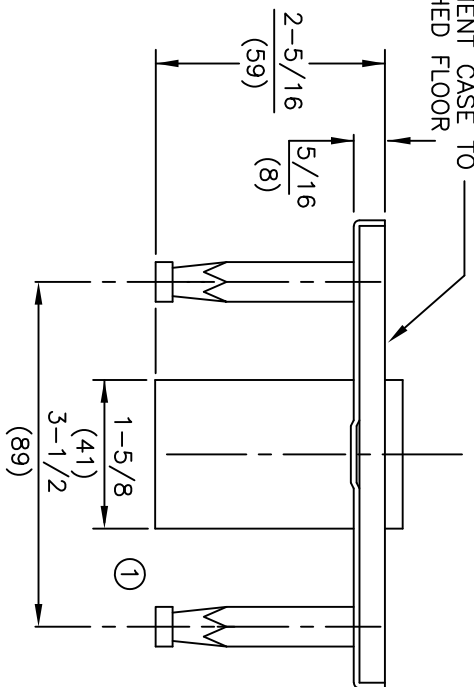
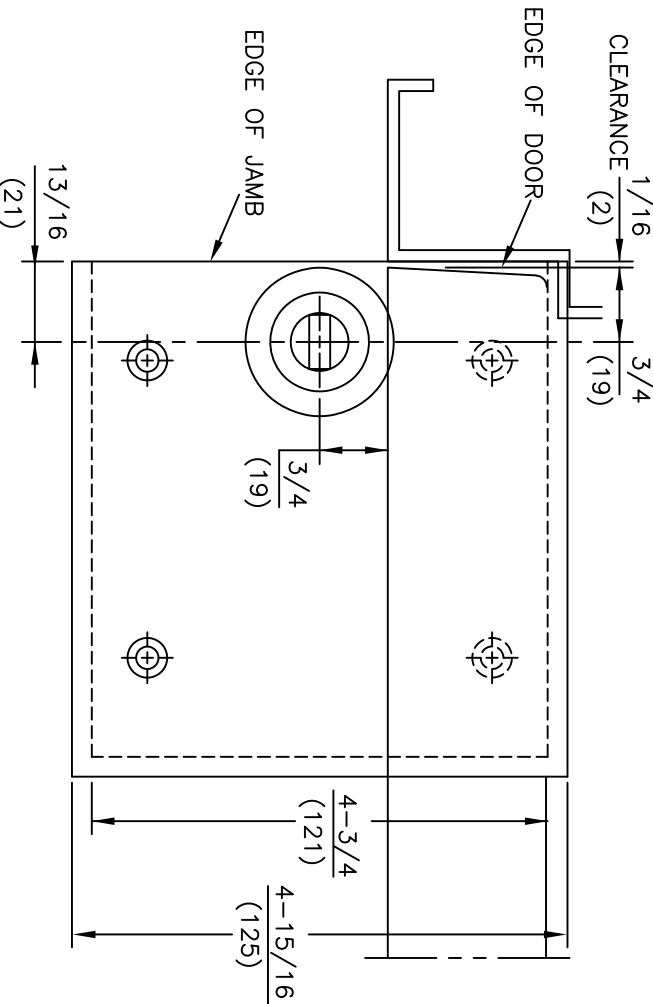
- **Make sure spindle center line is in proper alignment with top pivot.**
- **Bearing should be grouted in place so that it is square with frame, level in all directions and top of cover plate will be flush with finished floor.**
- **For threshold applications, drill a 1-1/4" diameter clearance hole in the threshold coinciding with the spindle location.**
- **Top of floor bearing cement case is flush with finished floor line for threshold applications.**

1.1.4 Anchor floor bearing first, then the threshold in a usual fashion.

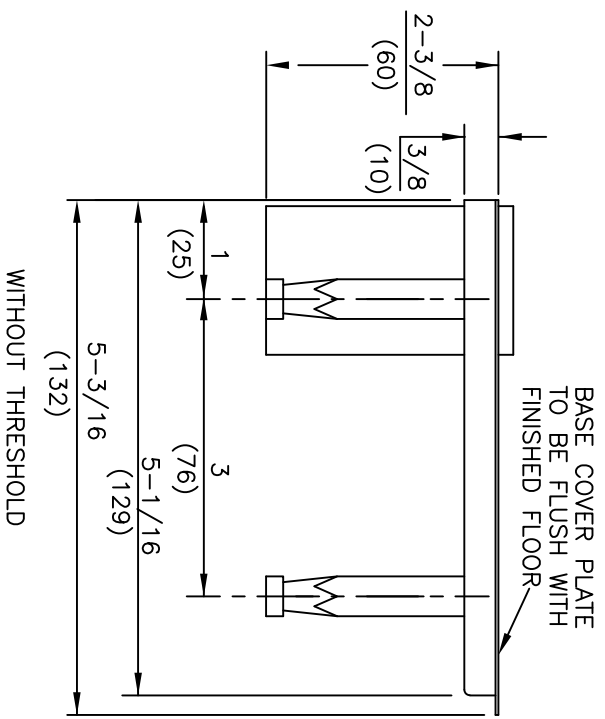
1.1.5 Attach spindle using 5mm hex key.

- NOTES:
1. DO NOT SCALE DRAWING.
  2. DIMENSIONS ARE IN INCHES\MM.
  3. RIGHT HAND DOOR SHOWN.

TOP SURFACE OF CEMENT CASE TO  
 BE FLUSH WITH FINISHED FLOOR



WITH THRESHOLD

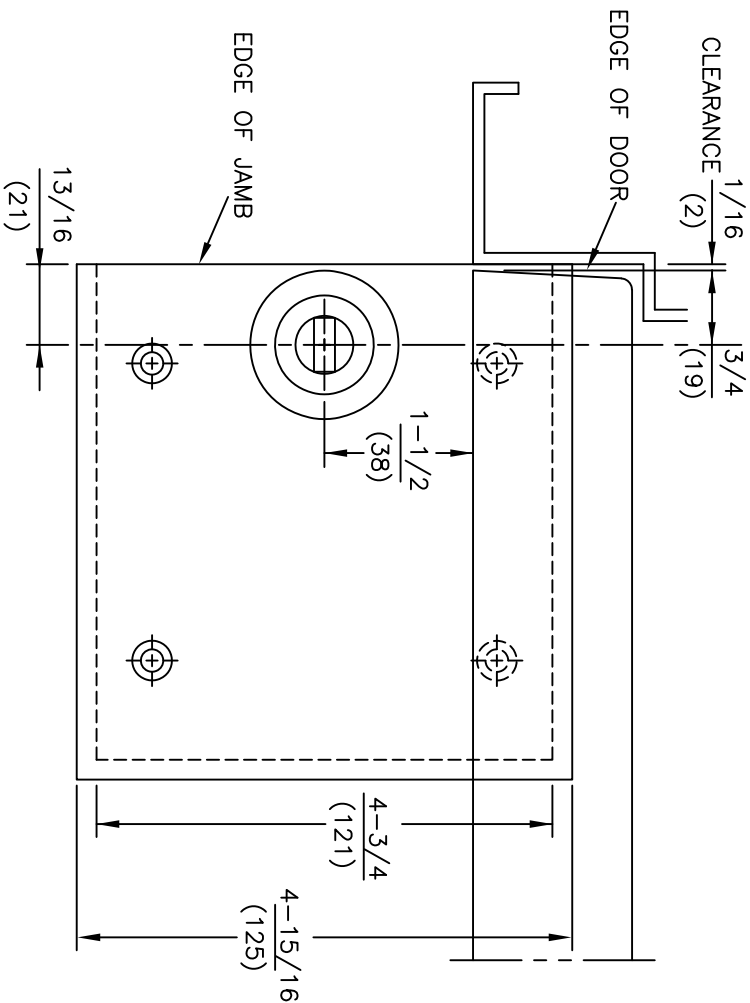


WITHOUT THRESHOLD

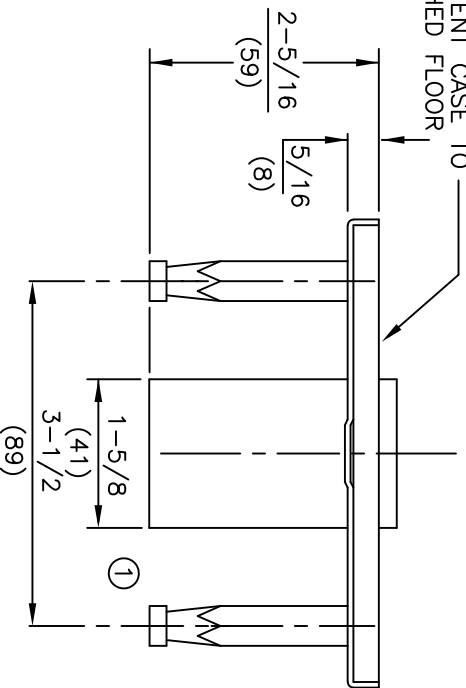
ITEM No. 7471HD FLOOR BEARING  
 3/4" OFFSET HEAVY DUTY FLOOR BEARING INSTALLATION  
 FOR USE WITH 75323 & 75343, 75343-2,  
 75343-2-1/4, 75343-2-1/2, 75343-3 LEAD LINED BOTTOM ARMS



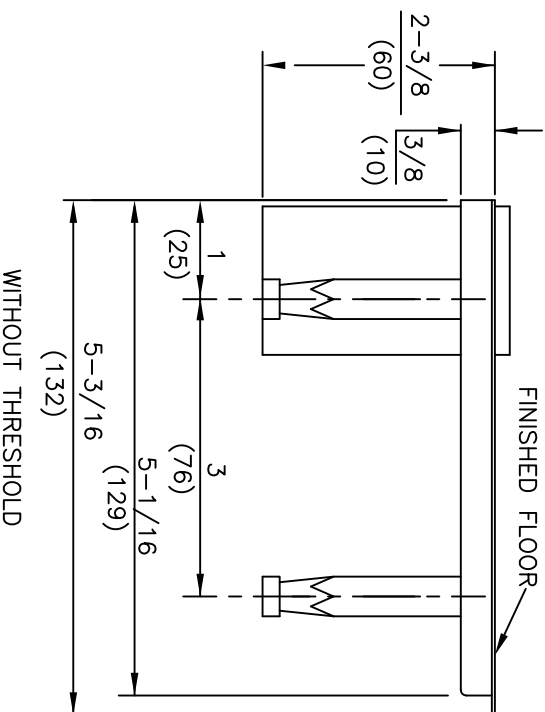
- NOTES:
1. DO NOT SCALE DRAWING.
  2. DIMENSIONS ARE IN INCHES\MM.
  3. RIGHT HAND DOOR SHOWN.



TOP SURFACE OF CEMENT CASE TO BE FLUSH WITH FINISHED FLOOR



BASE COVER PLATE TO BE FLUSH WITH FINISHED FLOOR

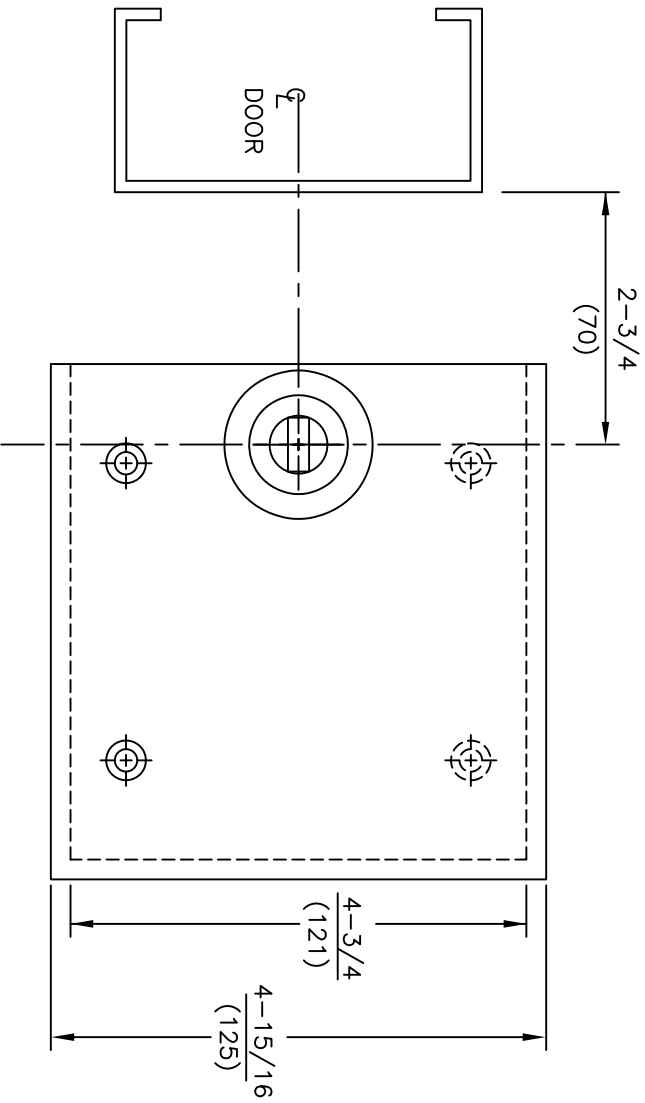


ITEM No. 7471HD FLOOR BEARING  
 1-1/2" OFFSET HEAVY DUTY FLOOR BEARING INSTALLATION  
 FOR USE WITH 15323 BOTTOM ARM

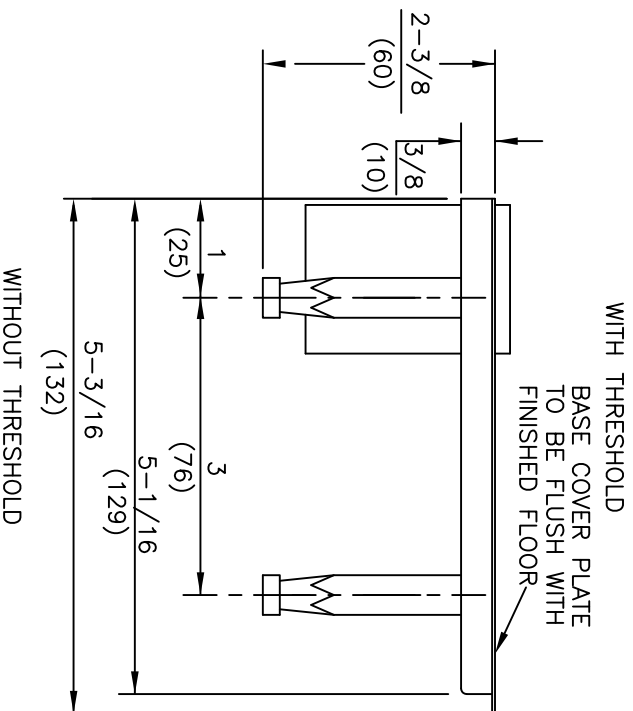
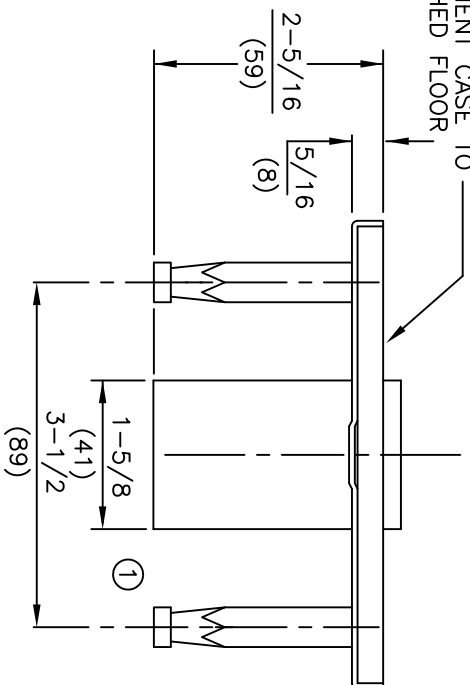


dormakaba USA, INC.  
 800 523 8483

- NOTES:
1. DO NOT SCALE DRAWING.
  2. DIMENSIONS ARE IN INCHES \ MM.
  3. RIGHT HAND DOOR SHOWN.



TOP SURFACE OF CEMENT CASE TO BE FLUSH WITH FINISHED FLOOR



ITEM No. 7471HD FLOOR BEARING  
 CENTER HUNG HEAVY DUTY FLOOR BEARING INSTALLATION  
 FOR USE WITH 7421 BOTTOM ARM



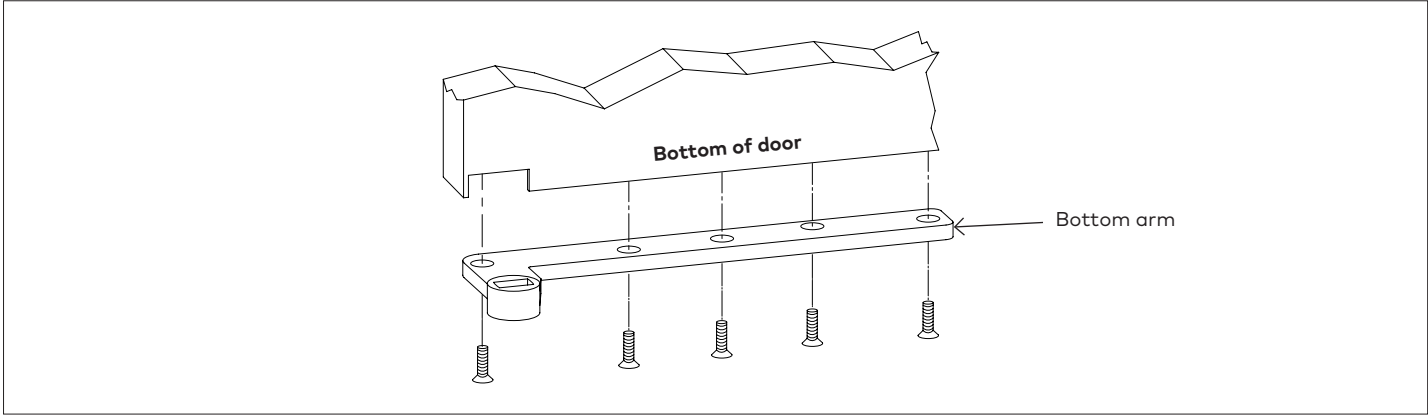
dormakaba USA, INC.  
 800 523 8483

# Installation Instructions

## 15323HD 1-1/2" Offset Bottom Arm (HD)

### 1.1 Install pivot

Fig. 1



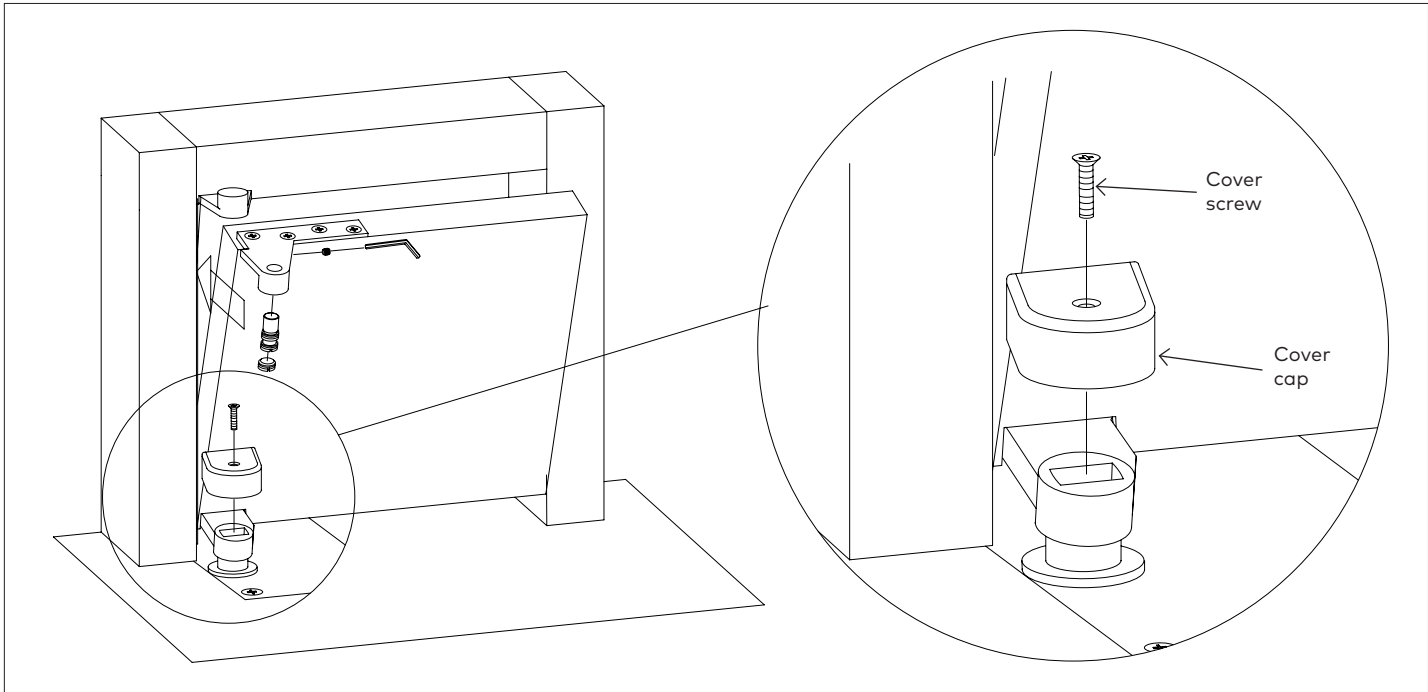
1.1.1 Prepare door and frame according to template.

1.1.2 Install bottom arm.

1.1.3 Fasten arm to door.

### 1.2 Install door

Fig. 2



1.2.1 Install door.

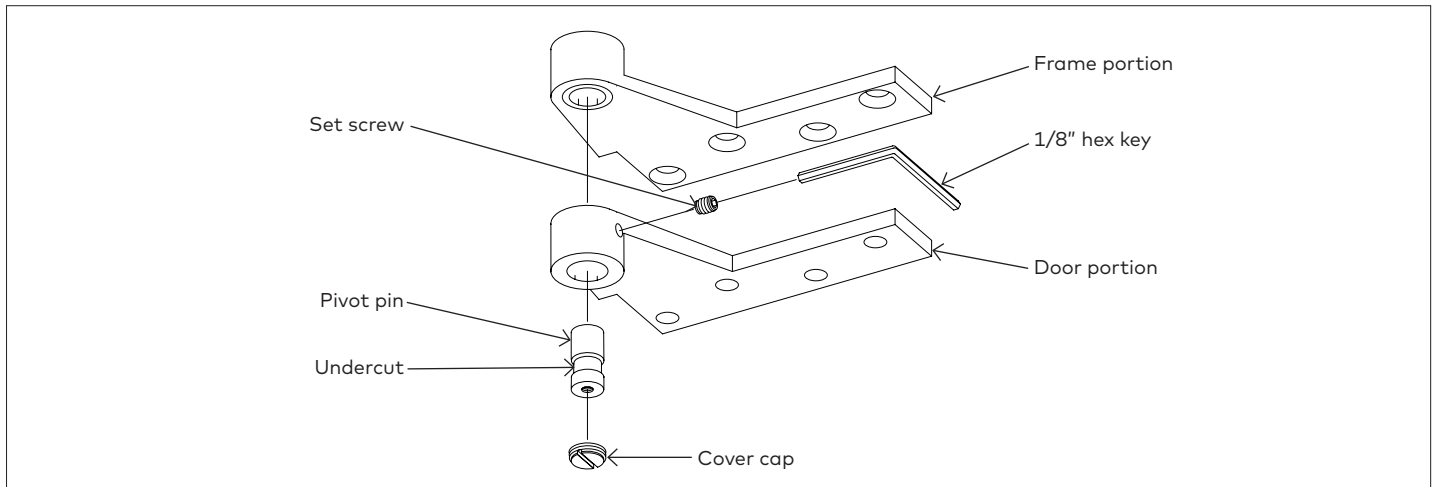
1.2.2 Attach cover cap with screw provided.



# Installation Instructions

## 1-1/2" Offset Top Pivot For use 15120, 15122, 15133

### 1.1 Install pivot

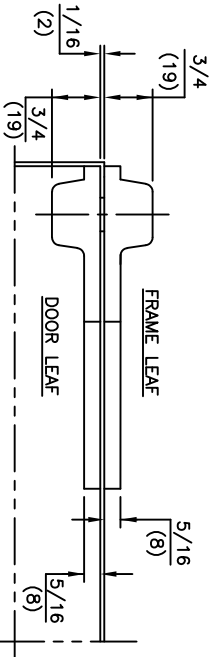
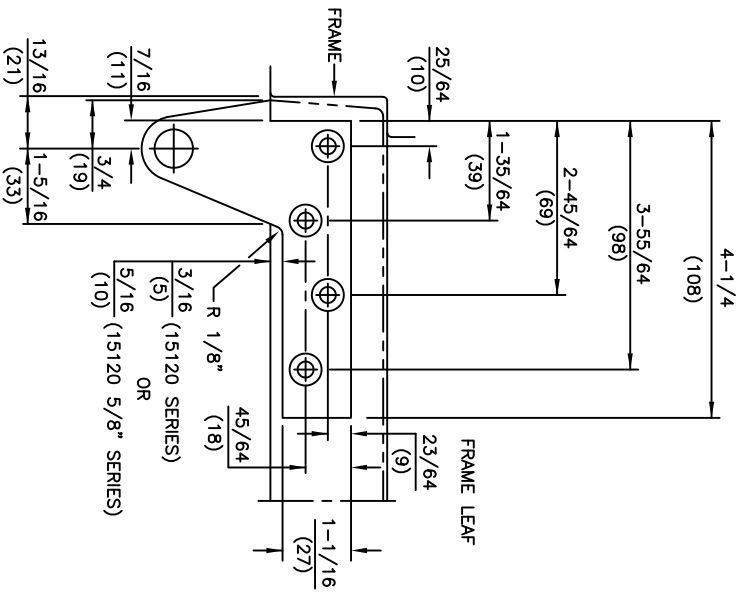
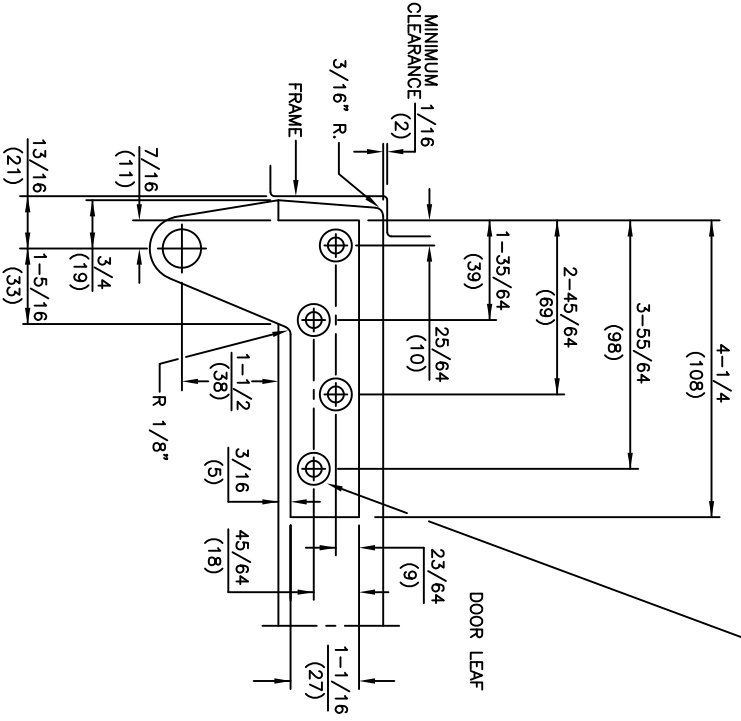


- 1.1.1 Prepare door and frame according to template.
- 1.1.2 Remove door portion cover cap.
- 1.1.3 Remove set screw.
- 1.1.4 Remove pivot pin.
- 1.1.5 Fasten pivot to door and frame.

- 1.1.6 Install door.
- 1.1.7 Align door and frame portions of top pivot.
- 1.1.8 Install pivot pin marking sure undercut area of pin aligns with set screw.
- 1.1.9 Tighten set screw securely.
- 1.1.10 Install door portion cover cap.

**NOTE: Depending on type of pivot and hand of door, set screw may be in door portion or frame portion of pivot. However, pivot pin will always be removeable through door portion.**

FOR 1/4-20 MACHINE SCREWS USE No.7 DRILL  
 FOR No.14 WOOD SCREWS USE 5/32" DRILL  
 FOUR (4) HOLES PER LEAF



- NOTES
1. DO NOT SCALE DRAWING.
  2. DIMENSIONS ARE IN INCHES/(MM).
  3. RIGHT HAND DOOR SHOWN.
  4. BEVEL HEEL EDGE OF DOOR 1/8" IN 2".
  5. ALL NECESSARY REINFORCING FOR PIVOT BY OTHERS.

ITEM No. [15120, 15122, 15133 (FLUSH DOOR) NON-HANDED],  
 [15120 5/8, 15122 5/8, 15133 5/8 (1/8" REVEAL) HANDED]  
 1-1/2" OFFSET FULL MORTISE TOP PIVOT

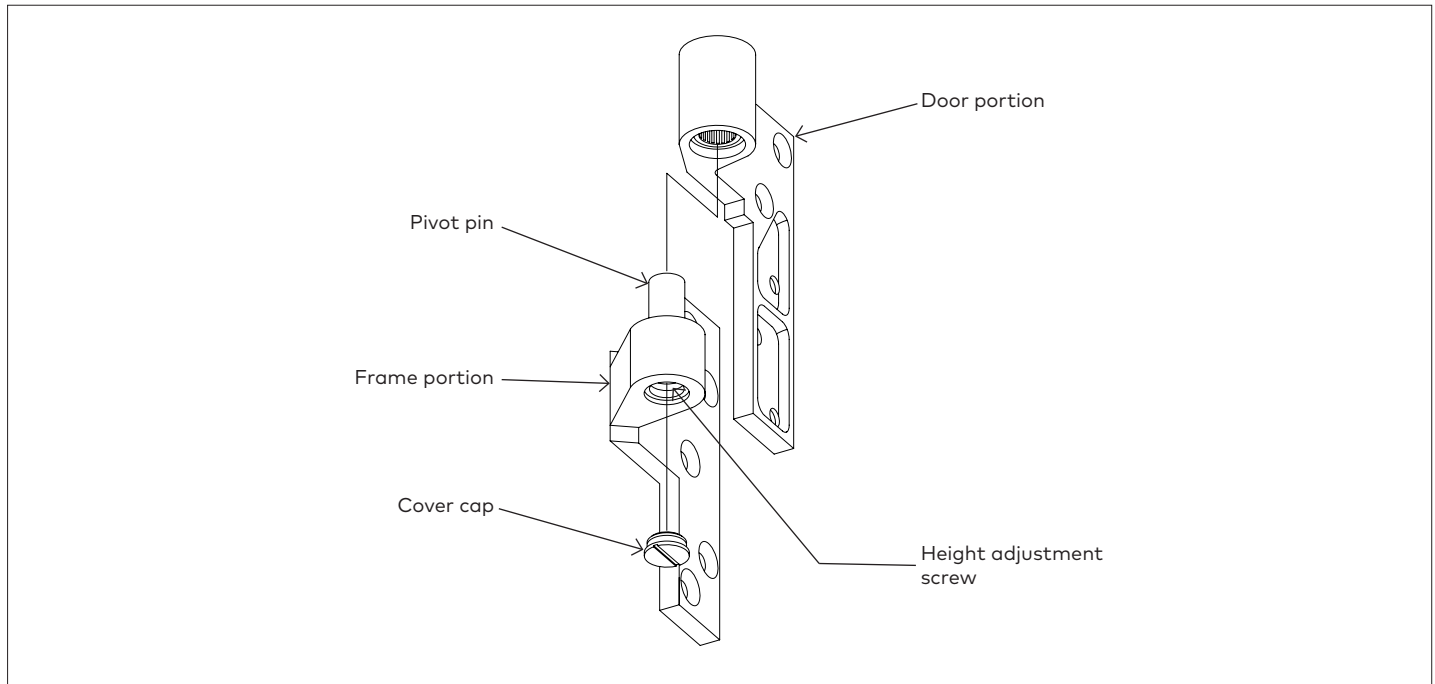


# Installation Instructions

15220, 15222, 15233

1-1/2" Offset Intermediate Pivot

## 1.1 Install pivot



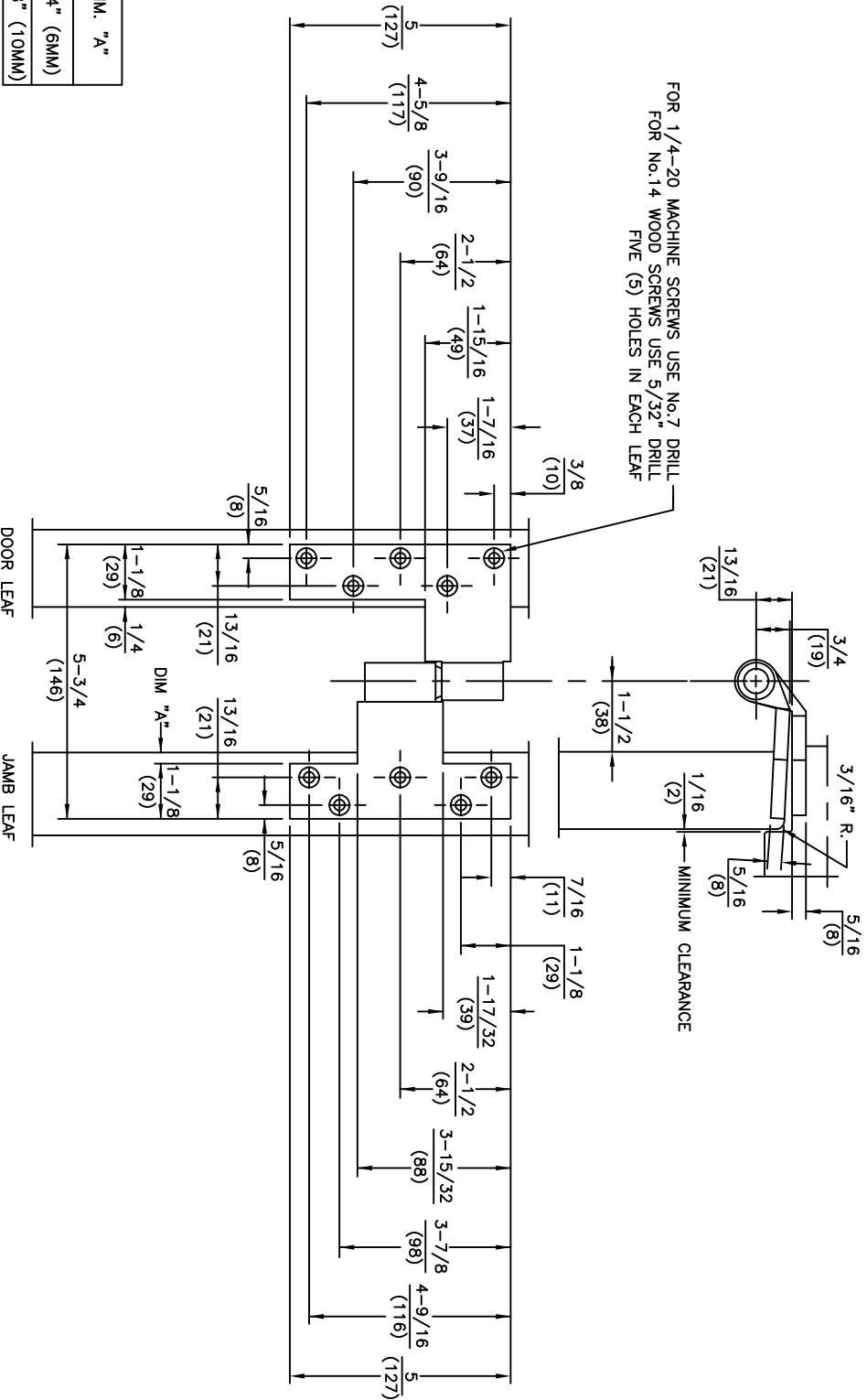
- 1.1.1 Prepare door and frame according to template.
- 1.1.2 Install door.
- 1.1.3 Fasten frame portion of pivot.
- 1.1.4 Fasten door portion of pivot.
- 1.1.5 Adjust verticle height of door, if necessary.
- 1.1.6 Remove cover cap.

- 1.1.7 Adjust door height:
  - Turn clockwise - to raise door
  - Turn counter-clockwise - to lower door
- 1.1.8 Replace cover cap.

**NOTE:** When intermediate pivots are used in conjunction with the BTS Series Floor Closer, the entire weight of the door must rest firmly on the floor closer spindle.

To insure proper installation, the center line of the intermediate pivot must be in line with the centerline of the top and bottom pivot.

- NOTES
1. DO NOT SCALE DRAWING.
  2. DIMENSIONS ARE IN INCHES/(MM).
  3. RIGHT HAND DOOR SHOWN.
  4. BEVEL HEEL EDGE OF DOOR 1/8" IN 2".
  5. ALL NECESSARY REINFORCEMENT FOR PIVOT BY OTHERS.



|                      |             |
|----------------------|-------------|
| DOOR/FRAME CONDITION | DIM. "A"    |
| FLUSH DOOR AND FRAME | 1/4" (6MM)  |
| 1/8" REVEAL          | 3/8" (10MM) |

ITEM No. 15220, 15222, 15233  
 1-1/2" OFFSET FULL MORTISE  
 INTERMEDIATE PIVOT (HANDED)

