

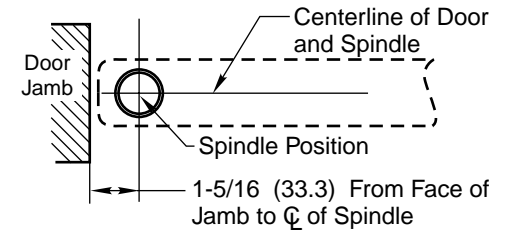
# 127-3/4 & 128-3/4 Pivot Set

Center Hung

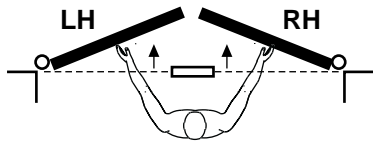
## Installation Instructions

### 1. LOCATE PIVOT

- A. Measure 1-5/16 (33.3) out from door jamb on centerline of door. This is the location of spindle center.
- B. Round heel edge and prepare door for 1/16 (1.6) MIN. Clearance thru entire opening.



### Determine Hand of Door



### 2. INSTALL PIVOT SET

NOTE: Care must be exercised to see that bottom pivot is level. Use levels per illustration.

- A. 127-3/4 Bottom Pivot Jamb Portion:  
Mortise jamb to receive jamb leaf of bottom pivot as shown on reverse side.
- B. 128-3/4 Bottom Pivot Floor Portion:  
(1) Locate floor portion.  
(2) Anchor portion securely to floor.

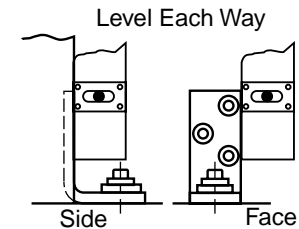
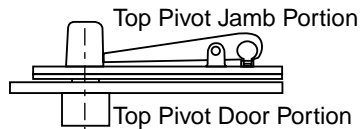
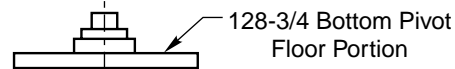
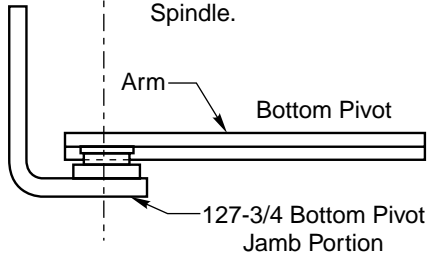


Figure 1



**IMPORTANT**  
Use plumb line to make sure that centerline of Top Pivot aligns with centerline of Bottom Spindle.



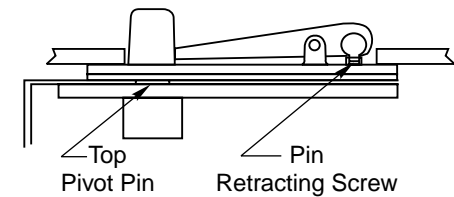
### 3. INSTALL TOP PIVOT AND PIVOT ARM.

- A. Install door portion of pivot per template.
- B. Install jamb portion of top pivot in frame per template.
- C. Centerline of pivot should align with centerline of bottom spindle. Use a plumb line to assure accuracy.
- D. Mortise bottom of door to receive arm (Mortise varies with required clearance refer to template.)

See Figure 1

### 4. HANG DOOR

Set arm, mortised in door, on pivot spindle and engage the top pivot pin by turning pin retracting screw clockwise.



### 5. DISMOUNT DOOR (IF REQUIRED)

Pull top of door out of opening, banking it toward you. Lift bottom of door off spindle at the floor.

Floor and Jamb Mounted  
Pivot Set  
Center Hung

**RIXSON™**

Rixson Specialty Door Controls

www.rixson.com

NUMBER IS-127-3/4  
IS-128-3/4

DATE 8-04

DO NOT SCALE DRAWING

