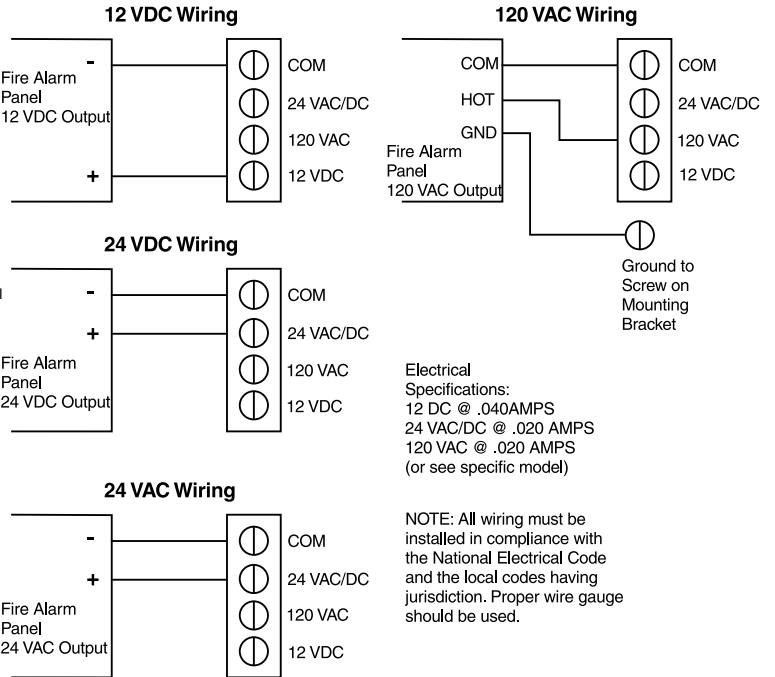


Operation Narrative

Doors are to be normally held open. The electromagnetic door releases will be energized with the voltage shown (at right) in the hardware set for this opening. Power shall be controlled by the fire control system. It will interrupt the power if alarmed, causing the doors to be released, thus allowing the door closers to close the doors. When power is restored the magnets will re-energize, permitting the doors to be manually returned to their held open position.



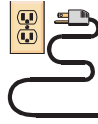


TROUBLE-SHOOTING YOUR NEW DOOR HOLDER:

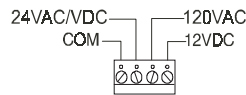
980999IS (04-13)

PROBLEM

- Does not hold

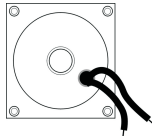


Power not turned on.

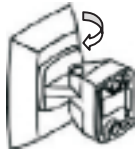


Neutral wire not connected to "COM" on terminal strip.

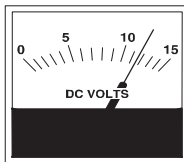
Power wire not connected to correct power slot on terminal strip.



For single voltage coils--one wire attaches to ground, the other is attached to the power wire.



Contact plate is not sitting completely flat across circular ring of the coil.



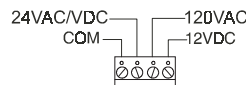
Check line voltage coming from power supply (range +/-10%).

- Holding force weak (less than 25 pounds)



For DC coils reverse polarity. Switch position of wires on terminal strip.

Dirt or cleaning solvent on contact plate or on circular ring of coil; **wipe with very fine emery cloth.**



Power wire not connected to correct power slot on terminal strip.

12VAC input instead of 12VDC

- Humming sound



Contact plate not sitting completely flat across the circular ring of the coil.

ASSA ABLOY is the global leader in door opening solutions, dedicated to satisfying end-user needs for security, safety and convenience.

Rixson® is a registered trademark of Yale Security Inc., an ASSA ABLOY Group company. Copyright© 2003, 2013, Yale Security Inc., an ASSA ABLOY Group company. All rights reserved. Reproduction in whole or in part without the express written permission of Yale Security Inc. is prohibited.