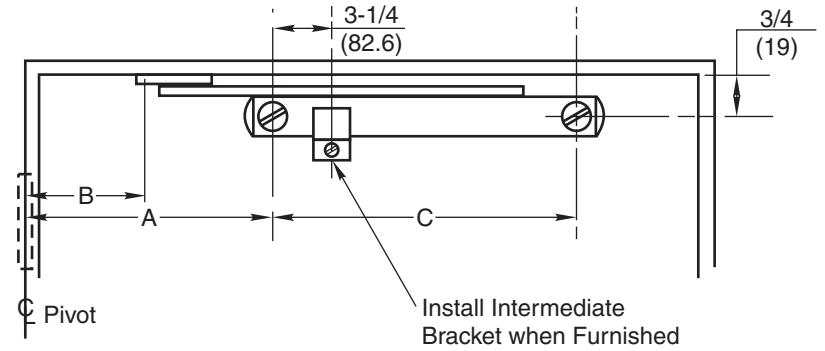
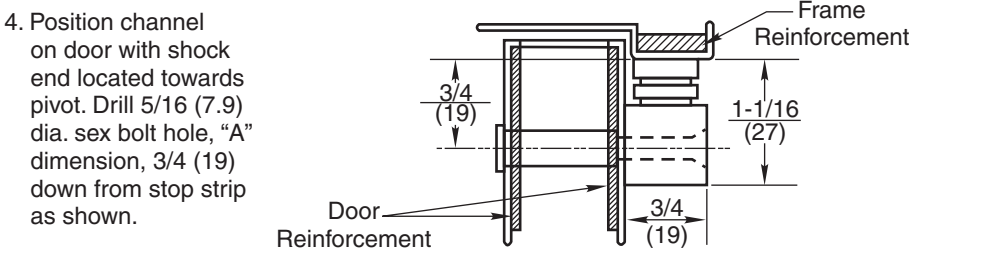
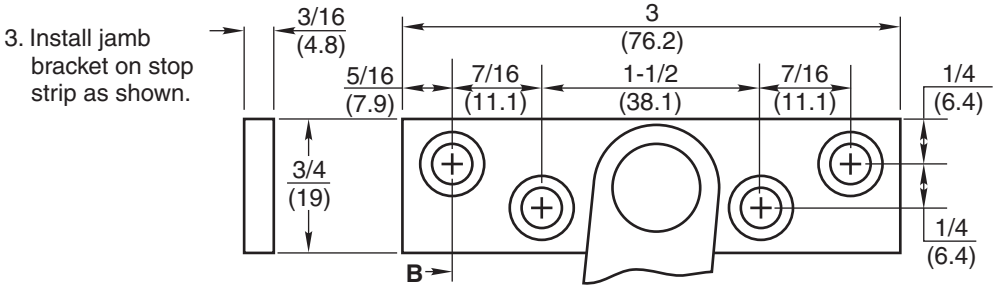


5. Install channel on door with "A" dimension sex bolt. Locate "C" dimension sex bolt hole making sure that channel is horizontal and parallel with stop strip. Drill 5/16 (7.9) dia. sex bolt hole and finish installing holder.



**INSTALLATION INSTRUCTIONS**

1. Select proper dimensions from chart on back side of page.
2. Locate "A" and "B" dimensions on door and frame.

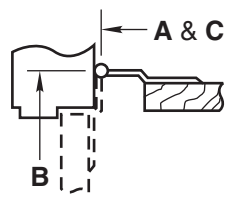


**Notes:**

- All hollow metal frames should be properly reinforced with 3/16" (4.8) min. thickness x 12" (304.8) min. length reinforcement plates.
- All hollow metal doors should be properly reinforced.
- All drilling and tapping to be done by field men.
- Suggest mounting door stop or holder first and then other hardware to clear. Contact factory if interference results with other hardware.
- Jamb bracket to be on same centerline as channel.
- Intermediate bracket #12 x 3/4" FSMS.
- All dimensions are given in inches (mm).

**Caution:**

Note location of swing clear hinge centerline to determine "A" and "B" dimensions.



Screw Details	
Jamb	Door
#12 x 1-1/2" FHWS or #12-24 x 1/2" FHMS (4 Places)	#12-24 x 1-1/2" FHMS and 5/16" Dia. Sex Bolt (2 Places)

**No. 10 Series  
Surface Mounted  
Door Stops and Holders**

**RIXSON®**  
**ASSA ABLOY**

www.rixson.com

TEMPLATE NUMBER	DATE
<b>OH80065A</b>	<b>05-09</b>

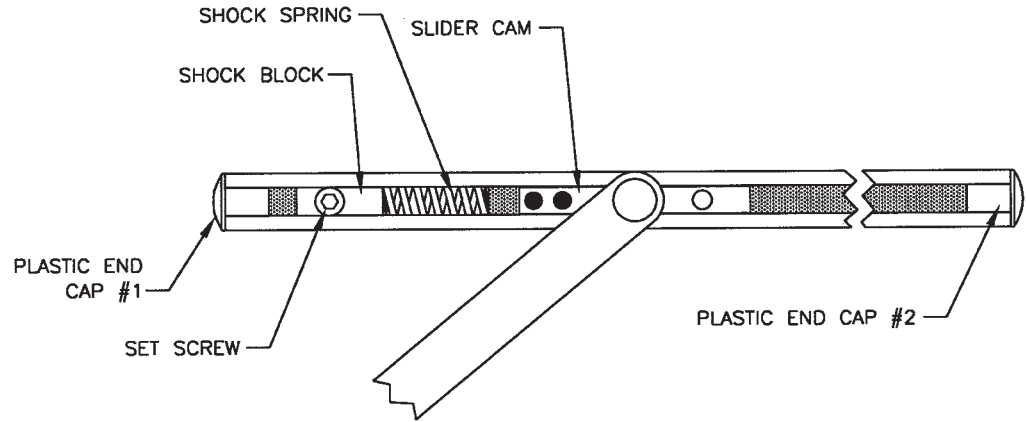
**No. 10 Series Surface Mounted Door Stops and Holders**

1. See other side for installation instructions.
2. Select proper dimensions noted below.
3. Add 5/8" to "A" dimension for dead stop.
4. All dimensions given in inches.

**When Using Center Hung Pivots, Check Pivot Manufacturer's Compatibility Prior to Specifying**

\* Butt mounting only.  
Reversible, non-handed.

	Device Number				Door Opening	A	B	C
	Friction	H.O.	Stop	Multi				
1 3/4 - 2 1/4 Butts & 3/4 Offset Pivot	10-116	10-126	10-136	10-146	*18-24	1 3/16	3 9/16	14 13/16
	10-216	10-226	10-236	10-246	24 1/16 - 30	3 3/4	4 3/16	16
	10-316	10-326	10-336	10-346	30 1/16 - 36	6 9/16	5 3/8	17 3/4
	10-416	10-426	10-436	10-446	36 1/16 - 42	9 13/16	7 1/16	20 3/16
	10-516	10-526	10-536	10-546	42 1/16 - 48	13 3/4	8 5/16	22
Center Hung	Device Number				Door Opening	A	B	C
	Friction	H.O.	Stop	Multi				
	10-116	10-126	10-136	10-146	21 - 26 1/2	1 5/8	4	14 13/16
	10-216	10-226	10-236	10-246	26 9/16 - 32	4 7/16	4 7/8	16
	10-316	10-326	10-336	10-346	32 1/16 - 38	7 3/16	6	17 3/4
	10-416	10-426	10-436	10-446	38 1/16 - 45	10 3/8	7 5/8	20 3/16
10-516	10-526	10-536	10-546	45 1/16 - 48	14 5/16	8 7/8	22	



**TO SELECT DEGREE OF STOP**

1. With a 3/16 hex key wrench, loosen the set screw in the shock block.
2. Open door to desired degree of opening.
3. Slide shock block and spring until the spring touches slider cam.
4. Tighten set screw.
5. Verify door opening position and re-adjust, as needed.

**No. 10 Series  
Surface Mounted  
Door Stops and Holders**

**RIXSON®**  
**ASSA ABLOY**

www.rixson.com

TEMPLATE NUMBER

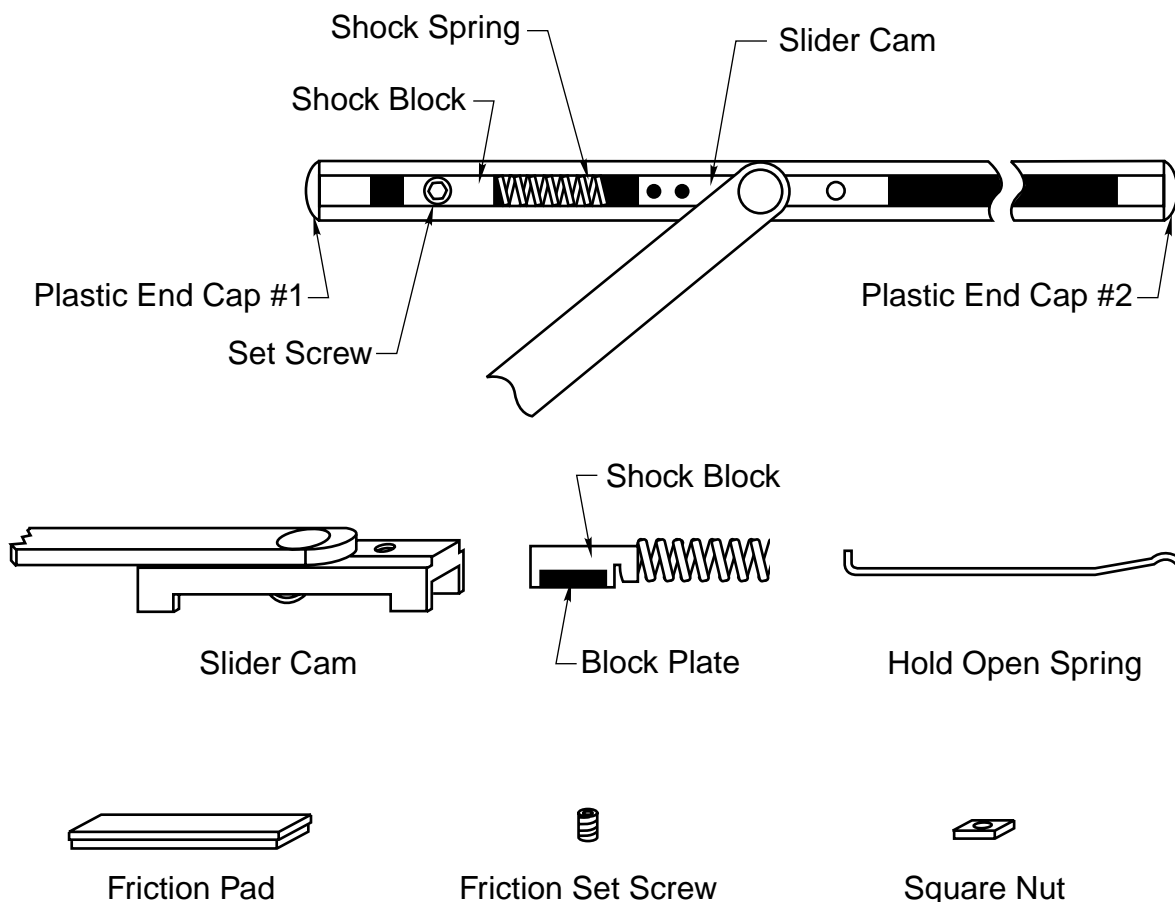
**OH80065B**

DATE

**05-09**

# Standard Duty Multi-Function Installation Instructions

After installing Checkmate® on door and frame, select the function desired and proceed.  
**All units are shipped as stops.**



### TO SELECT DEGREE OF STOP

1. With a 3/16" hex key wrench, loosen the set screw in the shock block.
2. Open door to desired degree of opening.
3. Slide shock block and spring until the spring touches slider cam.
4. Tighten set screw.
5. Verify door opening position and re-adjust, as needed.

**Standard Duty Multi-Function**

**RIXSON™**

**Rixson Specialty Door Controls**

www.rixson.com

NUMBER

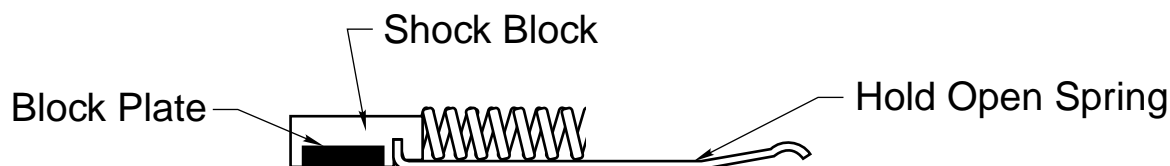
**IS-5012**

DATE

**9-06**

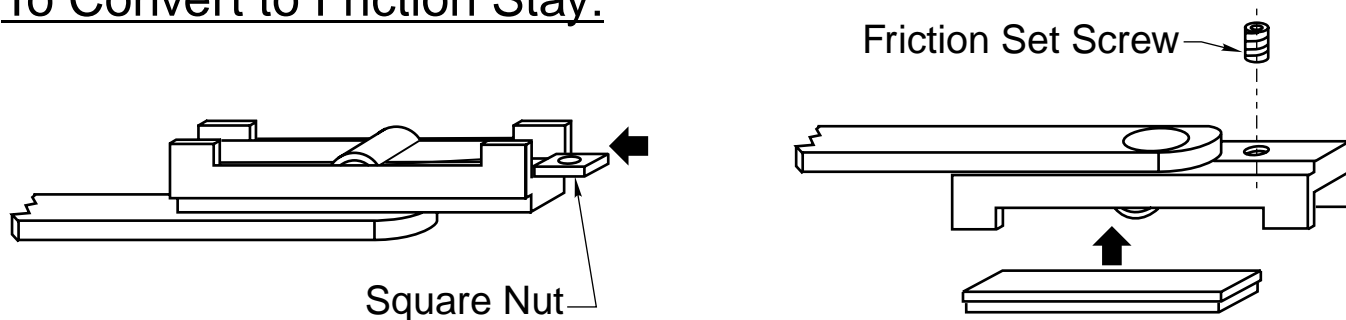
# WARNING: THESE FUNCTIONS CANNOT BE USED ON LABELED OPENINGS!

## To Convert to Hold Open:



1. Follow instructions for **selecting degree of stop.**
2. With pencil, mark the position of the shock block, on the channel.
3. Remove the plastic end cap at the spring end of the channel. (1)
4. With a 3/16" hex key wrench, loosen the set screw in shock block.
5. Remove shock block and block pate from channel.
6. Insert the hold open spring into the slot of the shock block.
7. Replace the shock block, block pate and hold open spring into channel.
8. Be sure the shock plate assembly is poistioned as shown.
9. Replace the plastic end cap.
10. Slide shock block until it lines up with mark you made on the channel.
11. Tighten set screw of shock block.

## To Convert to Friction Stay:



1. Follow instructions for **selecting degree of stop.**
2. Remove plastic end cap, farthest away from the spring (2).
3. Slide arm and slider cam out of the channel.
4. Turn slider cam over.
5. Insert the tip of a small screw driver under the round area of the spring.
6. Twist slightly, raising the unsecured end of the spring.
7. Slide square nut completely under end of spring. (Nut will drop into cavity in slider cam.)
8. Turn slider cam and arm over, insert friction set screw into hole on top of slider cam.
9. Turn the set screw one revolution to start threading it into the square nut.
10. Place friction pad in recess in slider cam. (Metal side of friction pad closest to slider cam).
11. Insert the slider cam and friction pad in the channel. (End with 2 rivets are toward the spring)
12. Replace the plastic end cap.
13. Adjust the set screw to the desired tension.

**Standard Duty Multi-Function**

**RIXSON™**

**Rixson Specialty Door Controls**

www.rixson.com

NUMBER

**IS-5012**

DATE

**9-06**