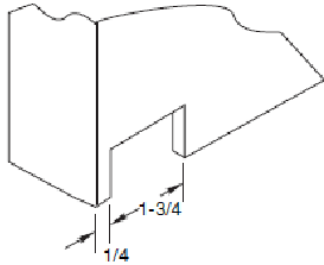


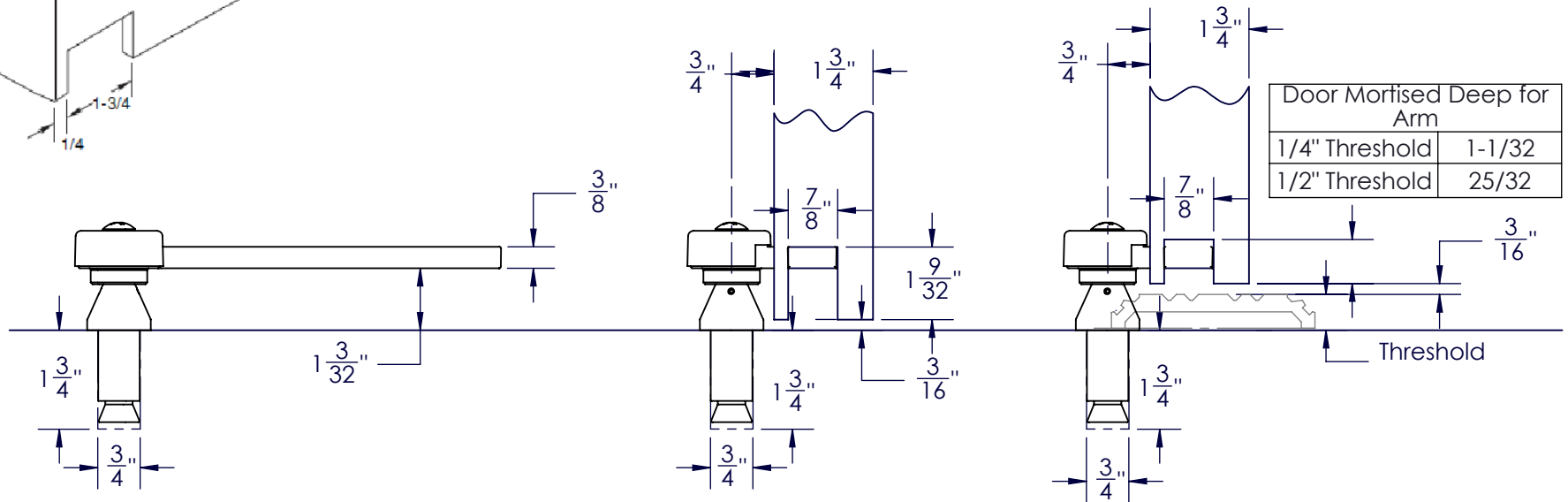
See View "A"

View "A"



Notes:

1. Do not scale drawing.
2. Right hand shown.
3. Suitable reinforcing by others.
4. Pivots drilled for  $1\frac{1}{4}" \times 20 \times \frac{3}{4}"$  FHMS or  $\#14 \times 1\frac{1}{2}"$  FHWS.
5. Maximum degree of opening  $180^\circ$ , trim permitting.
6. All dimensions are in inches.



10/06/2009

173 Pivot Set  
3/4" Offset

**RIXSON**  
ASSA ABLOY

www.rixson.com

TEMPLATE NUMBER

PS30700

DATE

10/09