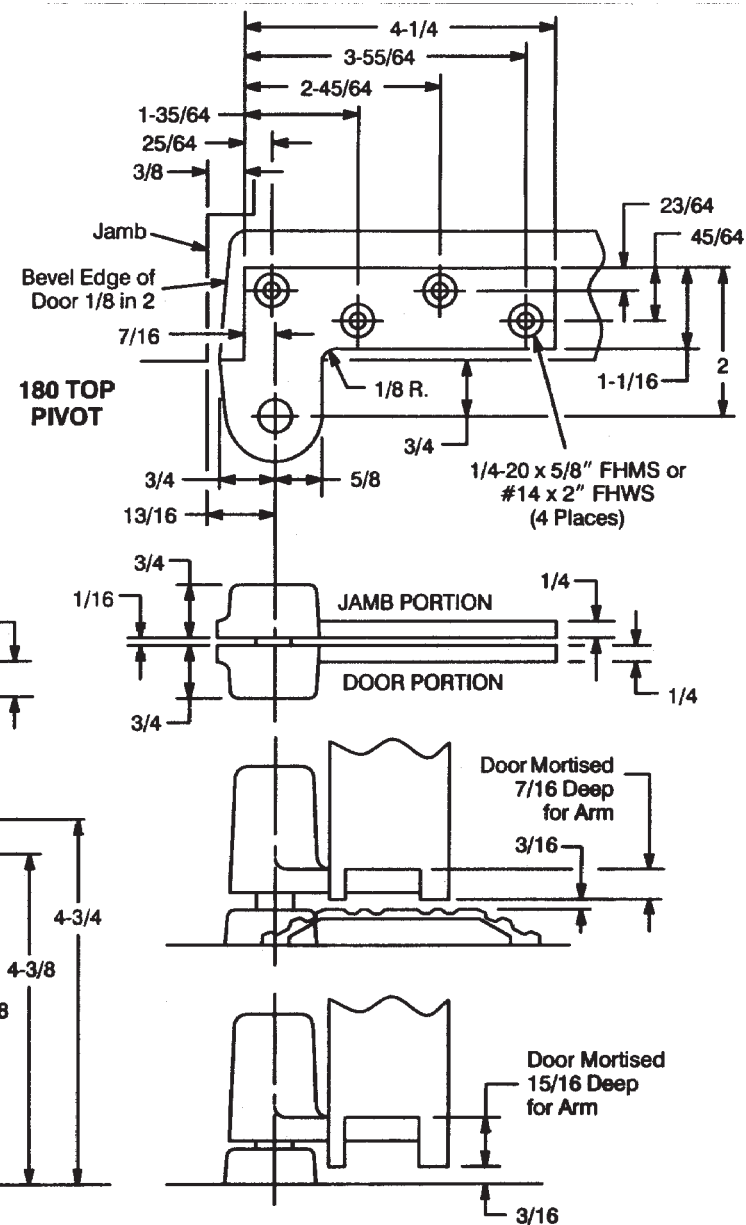
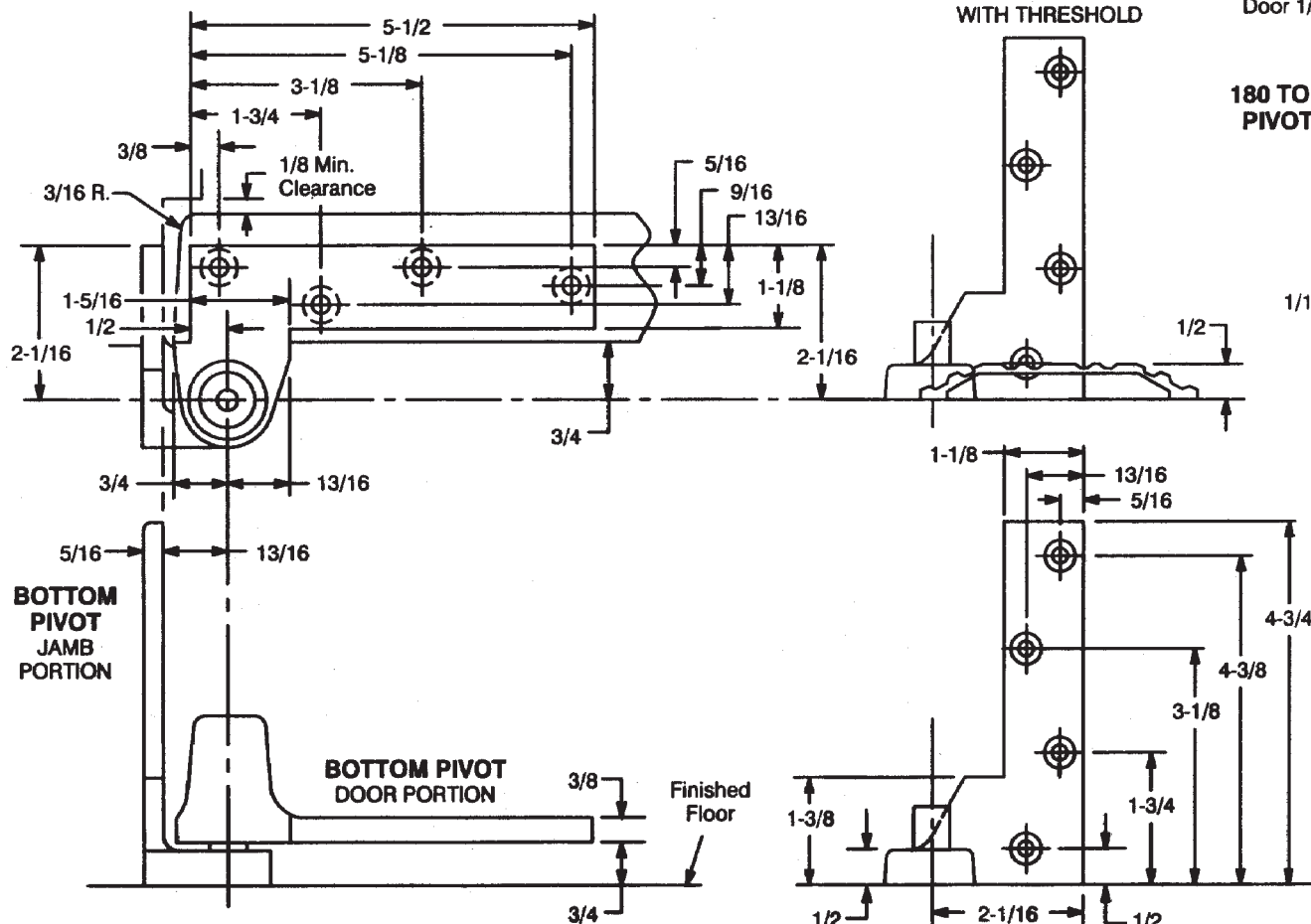


Notes:

1. Do not scale drawing.
2. Right hand shown.
3. Suitable reinforcing by others.
4. Pivots drilled for 1/4-20 x 5/8" FHMS or #14 x 1-1/2" FHWS.
5. When jamb portion is installed on top of threshold allow for threshold height when preparing frame and door mortise depth.
6. All dimensions are in inches.



**195 Pivot Set
3/4" Offset**

RIXSON
ASSA ABLOY

www.rixson.com

TEMPLATE NUMBER

PS30500

DATE

05-09