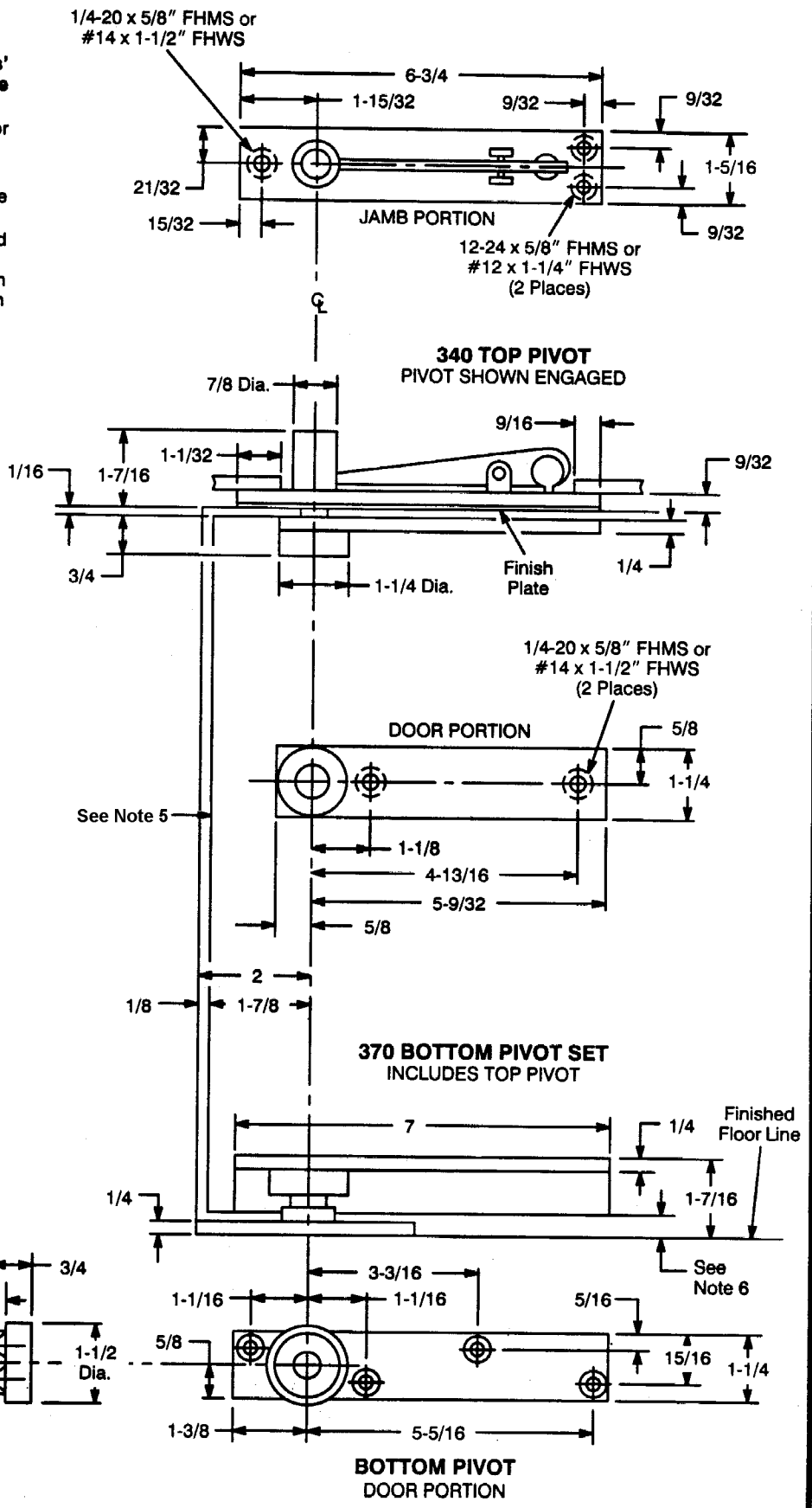
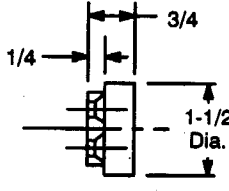
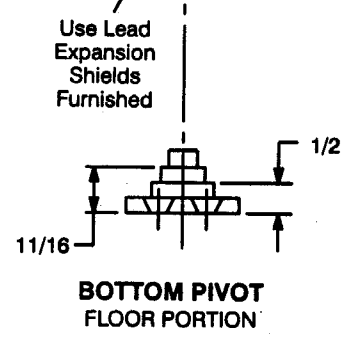
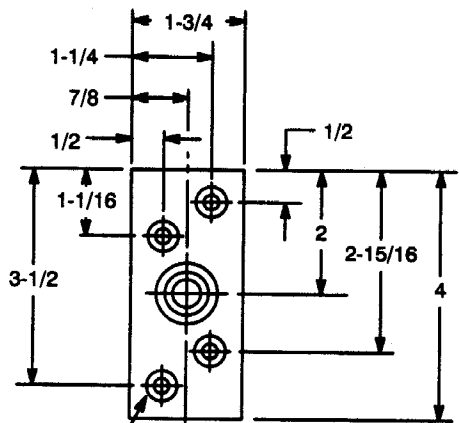


Notes:

1. Do not scale drawing.
2. It is the door and frame manufacturers' responsibility to check the hardware schedule and prepare doors and frames.
3. Pivots are drilled for 1/4-20 x 5/8" FHMS or #14 x 1-1/2" FHWS.
4. Suitable reinforcing by others.
5. For 1-3/4" to 2-1/2" doors, radius on heel edge of door is 1-7/8" max.
6. Coordinate door mortise depth with required clearance:
5/16" Min. Clearance = 1-1/8" Mortised Depth
11/16" Max. Clearance = 3/4" Mortised Depth
7. All dimensions are in inches.



**370 Pivot Set
Center Hung**

RIXSON®	
Rixson Specialty Door Controls	
www.rixson.com	
TEMPLATE NUMBER	DATE
PS30600	11-00