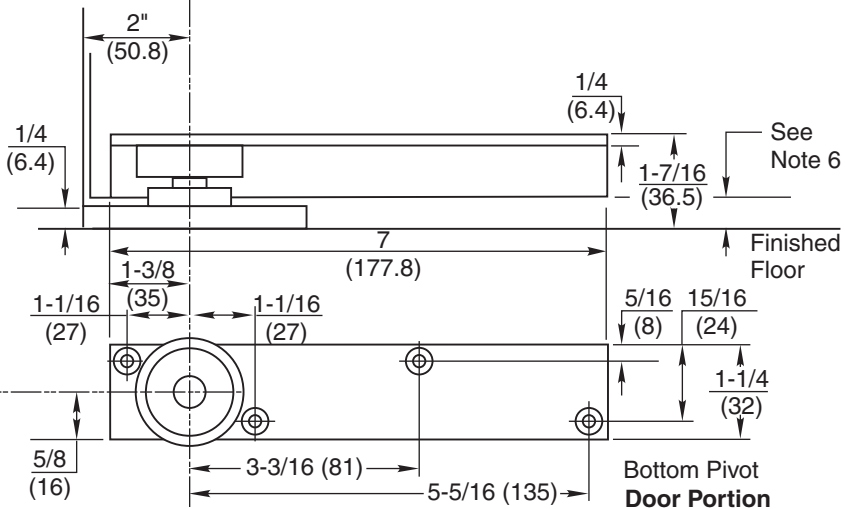
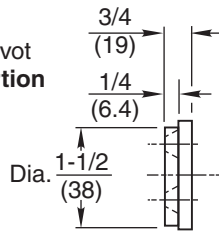
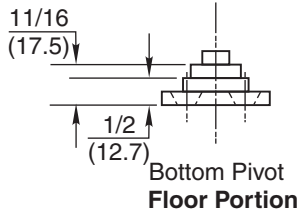
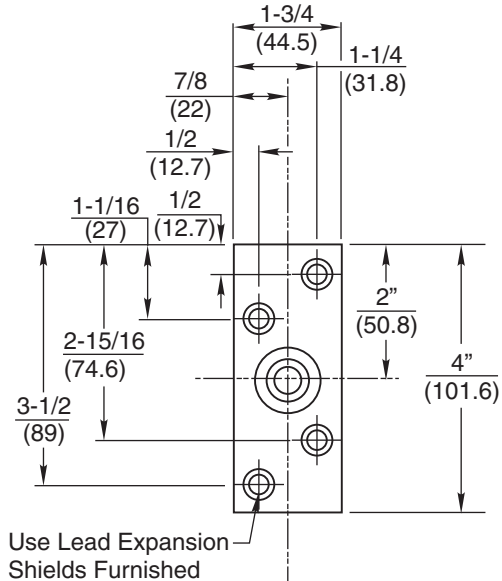


1/4-20x5/8 FHMS or
#14x1-1/2 FHWS

See 345 Long Pin Top Pivot Template
(for use on doors over 8'-6" tall)



370 Bottom Pivot

**NOTES:
IMPORTANT**

1. It is the door and frame manufacturers' responsibility to check the hardware schedule and prepare doors and frames.
2. Pivots drilled for 1/4-20x5/8 FHMS or #14 x 1-12 FHWS.
3. Suitable reinforcing by others.
4. For 1-3/4" to 2-1/2" (44.5 to 63.5) doors radius on heel edge of door 1-7/8" (47.6) max.
5. Minimum Pivot Point is 2" (50.8).
6. Coordinate door mortise depth with required clearance:
5/16" (7.9) Min Clearance = 1-1/8" (28.6) Mortised Depth
11/16" (17.5) Max Clearance = 3/4" (19) Mortised Depth
7. Dimensions given in inches (mm).

RIXSON
ASSA ABLOY

DATE

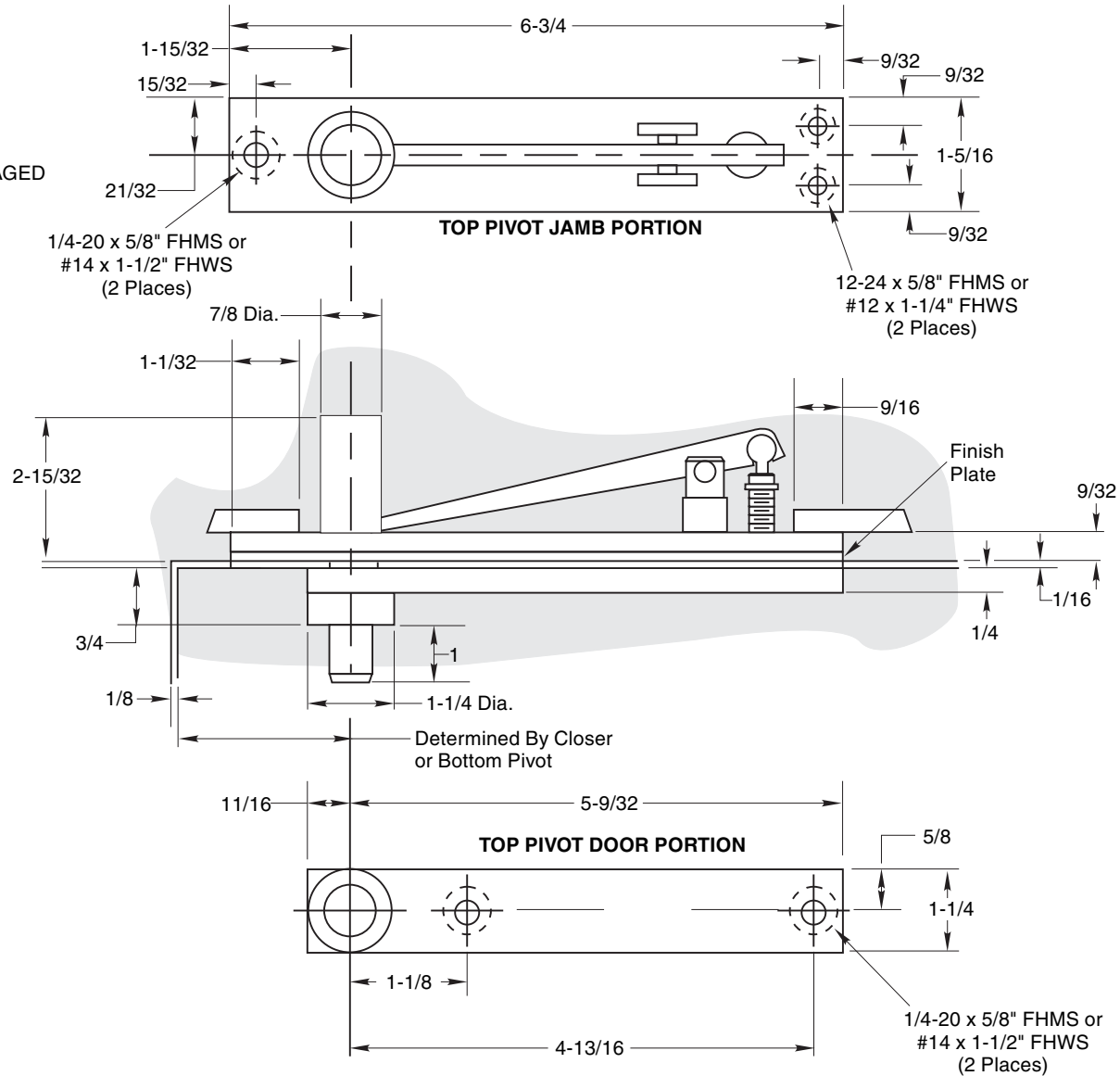
TEMPLATE NUMBER

**370 Bottom Pivot
Center Hung**

Notes:

1. Do not scale drawing.
2. All dimensions are in inches.

**345 TOP PIVOT
PIVOT SHOWN ENGAGED**



**345 Top Pivot
Center Hung**

RIXSON®
ASSA ABLOY

www.rixson.com

TEMPLATE NUMBER

TP40215

DATE

12-08